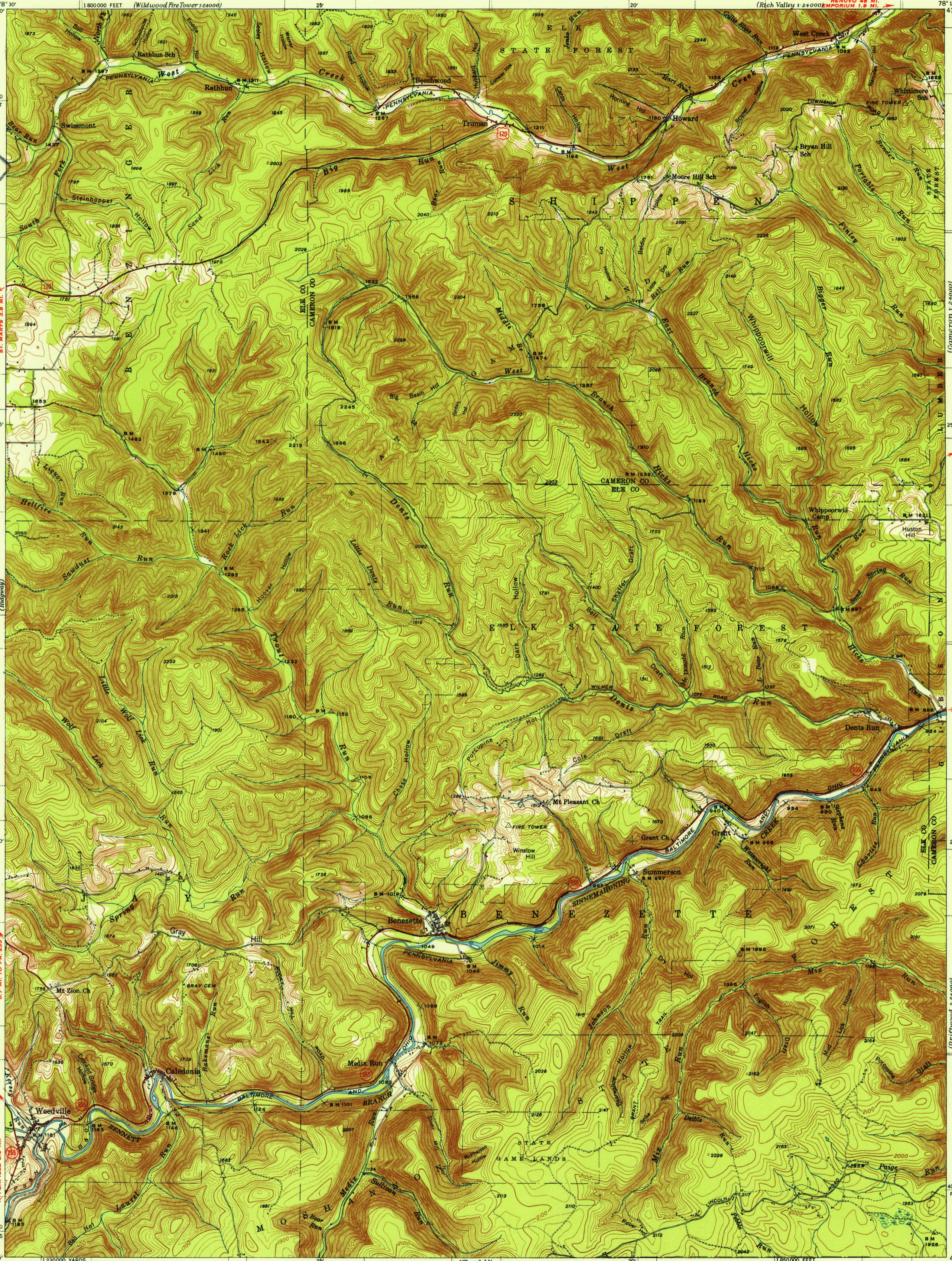


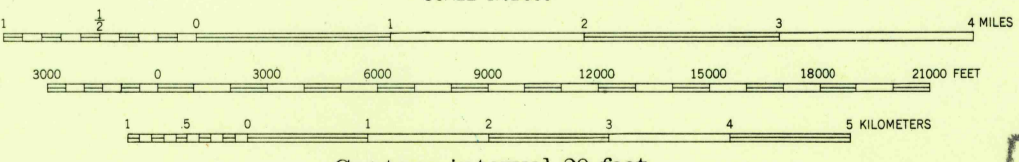
U.S.G.S.
FILE COPY
Inspection and Editing



Topography by F. H. Sargent, C. R. Atkins,
H. F. Ewing, and C. A. Killian
Surveyed in 1941

ROAD CLASSIFICATION
 HARD-SURFACE ALL WEATHER ROADS DRY WEATHER ROADS
 Heavy-duty 4 LANE 1 LANE
 Medium-duty 4 LANE 1 LANE Unimproved dirt
 Loose-surface, graded, or narrow hard-surface
 U. S. Route State Route

TRUE NORTH
MAGNETIC NORTH
APPROXIMATE MEAN
DECLINATION, 1941



Contour interval 20 feet
Datum is mean sea level
FOR SALE BY U. S. GEOLOGICAL SURVEY, WASHINGTON 25, D. C.
A FOLDER DESCRIBING TOPOGRAPHIC MAPS AND SYMBOLS IS AVAILABLE ON REQUEST

USCS
Historical File
Topographic Division

U.S.G.S.
FILE COPY
Inspection and Editing

Polyconic projection. 1927 North American datum
5000 yard grid based on U. S. zone system, B
10000 foot grid based on Pennsylvania (North)
rectangular coordinate system

BENEZETTE, PA.
1941
N4115-W7815/15