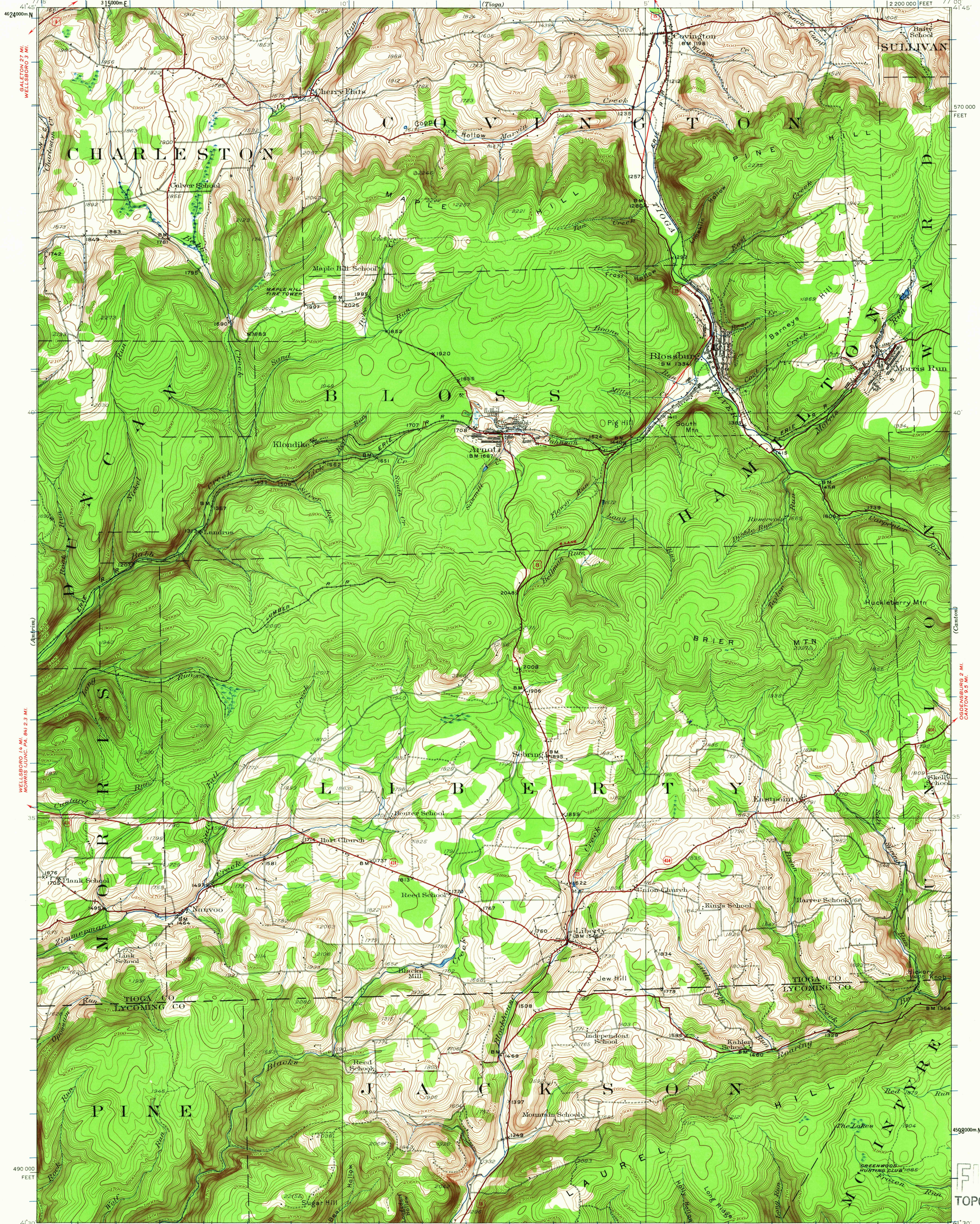


MANSFIELD QUANC. U.S. 151 10 MI.  
WHITNEYVILLE 3.2 MI.

STATE OF PENNSYLVANIA  
REPRESENTED BY THE  
DEPARTMENT OF INTERNAL AFFAIRS  
TOPOGRAPHIC AND GEOLOGIC SURVEY

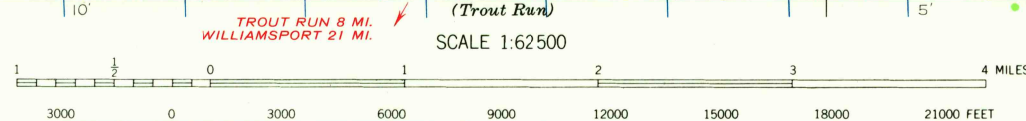
PENNSYLVANIA  
BLOSSBURG QUADRANGLE  
2 200 000 FEET

UNITED STATES  
DEPARTMENT OF THE INTERIOR  
GEOLOGICAL SURVEY



Topography by F.A. Danforth, J.H. Wilke, and W.S. Beames  
Surveyed in 1925

ROAD CLASSIFICATION  
Heavy-duty ——— Light-duty ———  
Medium-duty ——— Unimproved dirt ———  
U.S. Route      State Route



CONTOUR INTERVAL 20 FEET  
DATUM IS MEAN SEA LEVEL

FOR SALE BY U.S. GEOLOGICAL SURVEY, WASHINGTON, D. C. 20242  
A FOLDER DESCRIBING TOPOGRAPHIC MAPS AND SYMBOLS IS AVAILABLE ON REQUEST

Interior Geological Survey, Washington, D. C. 1968  
Polyconic projection, 1927 North American datum  
10,000-foot grid based on Pennsylvania (North)  
rectangular coordinate system  
1000-meter Universal Transverse Mercator grid ticks,  
zone 18, shown in blue

USGS  
Historical File  
Topographic Division

BLOSSBURG, PA.  
N 4130-W 7700/15  
1925

U.S.G.S.  
FILE COPY  
TOPOGRAPHIC DIVISION

3660