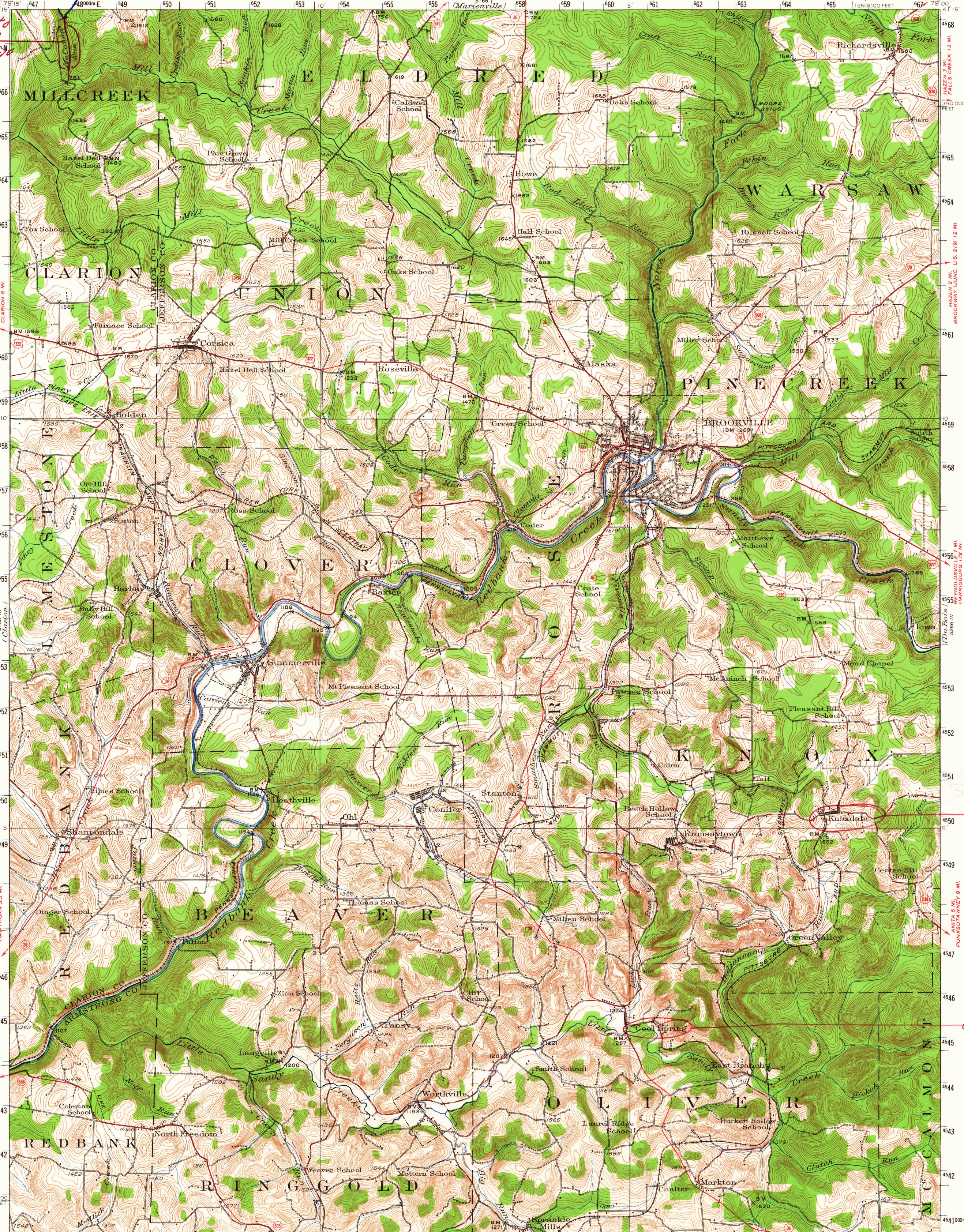


OFFICIAL STANDARD NAME  
JAN 27 1977  
1972  
McCanna Run to  
Pondleton Run  
A.H. Ryan memo 10/25/71  
To DNC 11-3-70

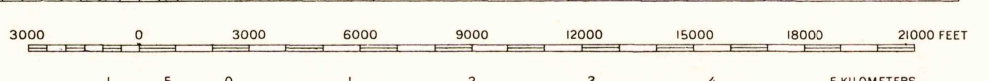
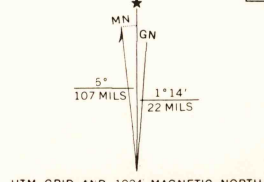
RIDGEWAY 26 MI.  
MUNDERF 5 MI.  
806 W. (Hickton)



Topography by A.T. Fowler and F.H. Sargent  
Control in part by Pennsylvania State Highway Department  
and Pennsylvania Railroad  
Surveyed in 1922 and 1924

ROAD CLASSIFICATION

Heavy-duty	Light duty
Medium-duty	Unimproved dirt
U.S. Route	State Route



FOR SALE BY U.S. GEOLOGICAL SURVEY, WASHINGTON 25, D. C.  
A FOLDER DESCRIBING TOPOGRAPHIC MAPS AND SYMBOLS IS AVAILABLE ON REQUEST

Polyconic projection, 1927 North American datum  
10000 foot grid based on Pennsylvania (North)  
rectangular coordinate system  
1000-meter Universal Transverse Mercator grid ticks,  
zone 17, shown in blue

PUNXSUTAWNEY 6 MI.  
ALTOONA 6 MI.  
BROOKVILLE, PA.  
N4100-W7909/15  
1924  
AMS 5166 II-SERIES V731

RETURN TO:  
USGS MID HISTORICAL MAP ARCHIVES

U.S.G.S.  
FILE COPY  
TOPOGRAPHIC DIVISION

Corr. File

Knox Dale  
OSN 6-17-64

Cool Spring  
OSN 7-64