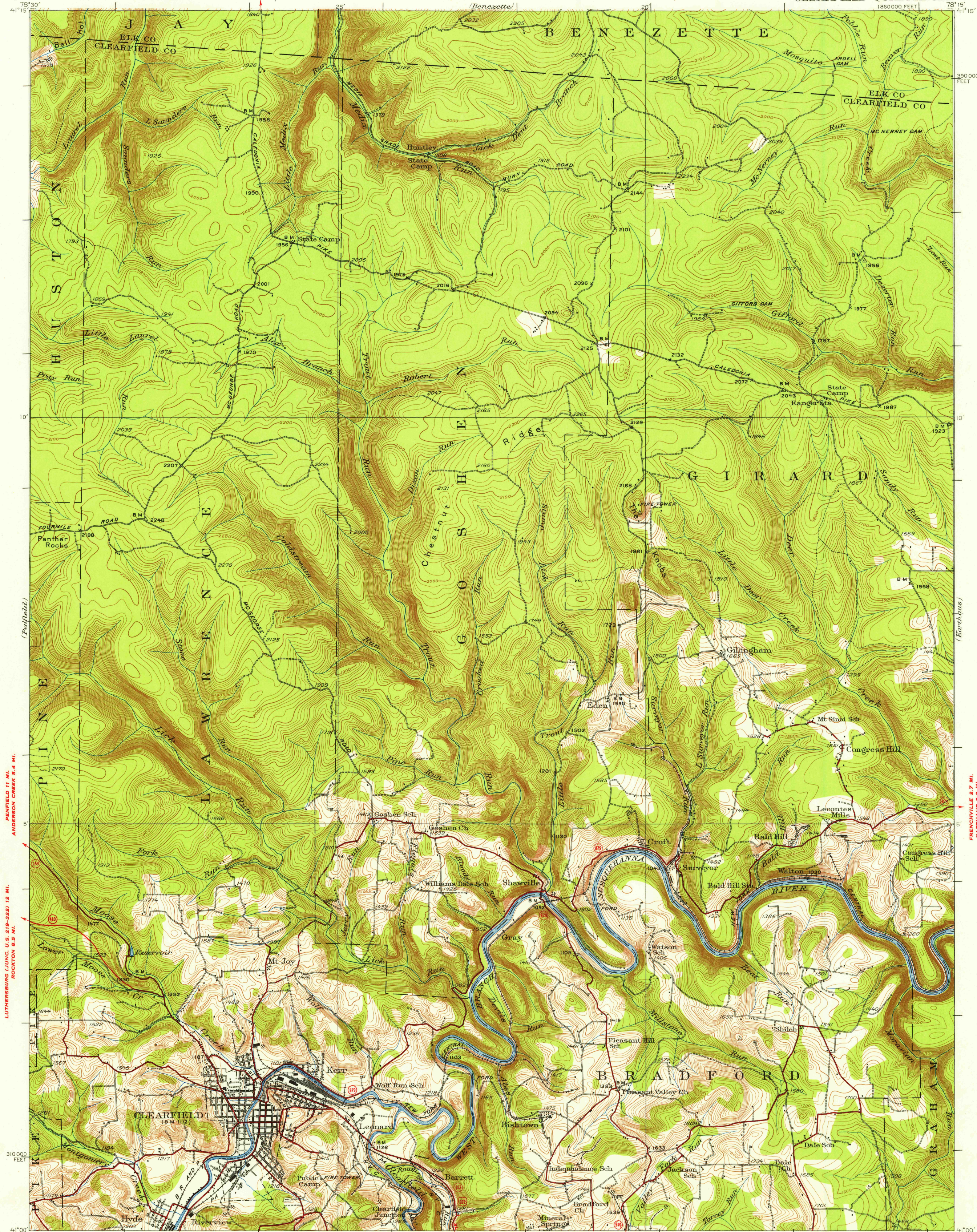


(Draftwood)  
30000



PENFIELD 11 MI.  
ANDERSON GREEN 6.4 MI.  
LUTHERSBURG (JUNC. U.S. 219-322) 12 MI.  
ROCKFORD 6.9 MI.

PHILIPSBURG 9.7 MI.  
MARTINUS 9.3 MI.

Topography by E.I. Ireland and H.G. Warner  
Surveyed in 1929  
CURWENVILLE 4.3 MI.  
GRAMPIAN (JUNC. U.S. 219) 9.6 MI.

WOODLAND 2 MI.  
PHILIPSBURG 14 MI. SCALE 1:62500  
0.5 MI. TO U.S. 322  
PHILIPSBURG 12 MI.

INTERIOR-GEOLOGICAL SURVEY WASHINGTON D.C. 1946  
Polyconic projection, 1927 North American datum  
10000 foot grid based on Pennsylvania (North)  
rectangular coordinate system

**ROAD CLASSIFICATION**  
Heavy-duty — 4 LANE 16 LANE Light-duty —  
Medium-duty — 4 LANE 16 LANE Unimproved dirt —  
U.S. Route — State Route

APPROXIMATE MEAN DECLINATION, 1929  
CONTOUR INTERVAL 20 FEET  
DATUM IS MEAN SEA LEVEL

USGS  
Historical File  
Topographic Division

CLEARFIELD, PA.  
N4100-W7815/15

1929

FOR SALE BY U. S. GEOLOGICAL SURVEY, WASHINGTON 25, D. C.  
A FOLDER DESCRIBING TOPOGRAPHIC MAPS AND SYMBOLS IS AVAILABLE ON REQUEST

U.S.G.S.  
FILE COPY  
TOPOGRAPHIC DIVISION

U.S.G.S.  
FILE COPY  
TOPOGRAPHIC DIVISION

JAN 17 1956

6145