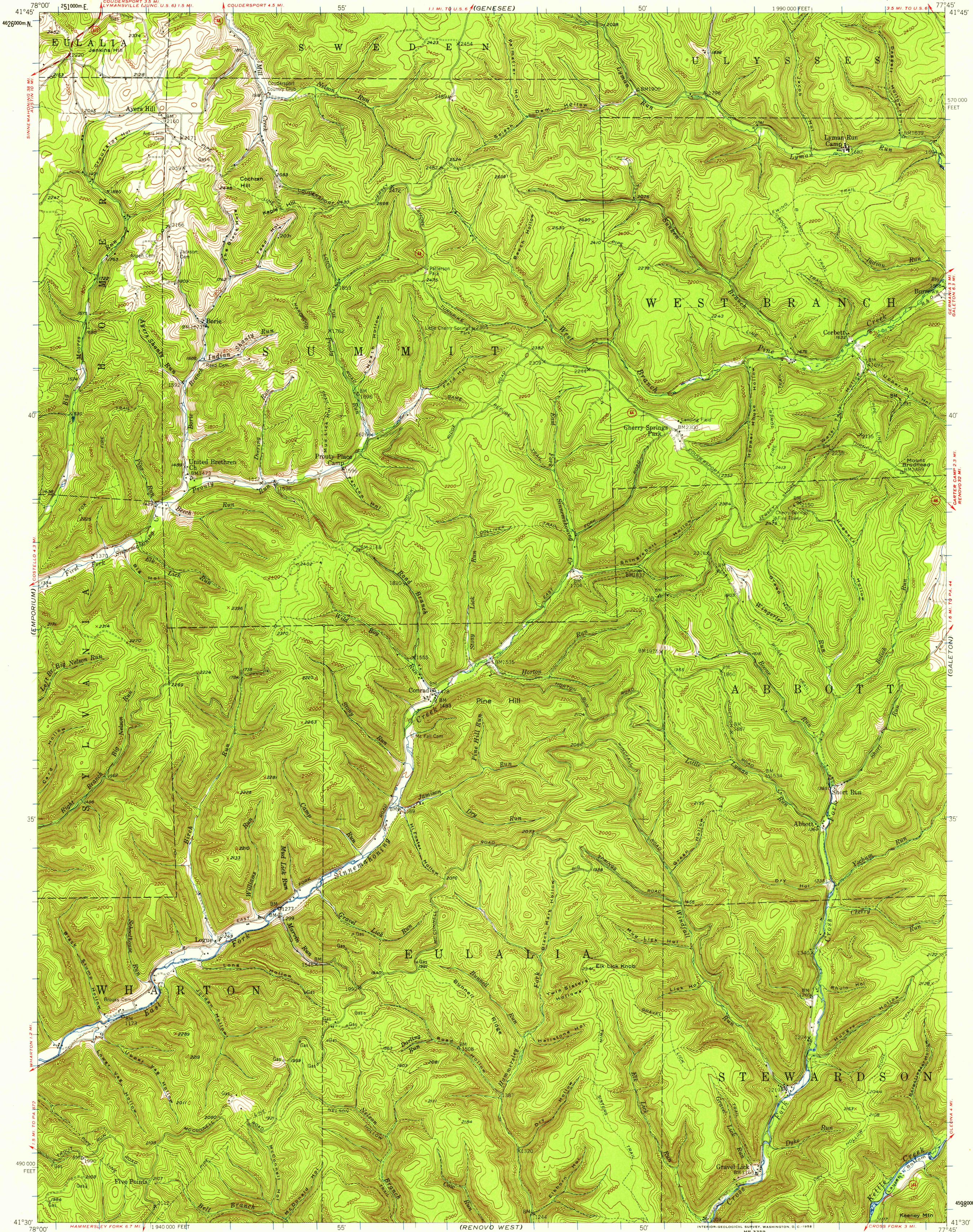
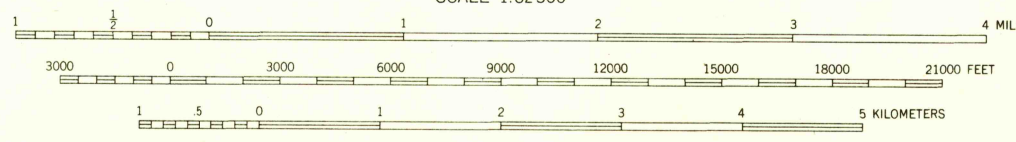


(COUDERSPORT)

(GAINES)



Mapped, edited, and published by the Geological Survey  
Control by USGS and USC&GS  
Topography from aerial photographs by multiplex methods  
Aerial photographs taken 1945. Field check 1947  
Polyconic projection. 1927 North American datum  
10,000-foot grid based on Pennsylvania coordinate system,  
north zone  
1000-meter Universal Transverse Mercator grid ticks,  
zone 18, shown in blue



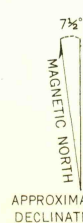
CONTOUR INTERVAL 40 FEET  
DATUM IS MEAN SEA LEVEL

ROAD CLASSIFICATION

Heavy-duty	4 LANE 13 LANE	Light-duty
Medium-duty	4 LANE 6 LANE	Unimproved dirt

U.S. Route (circle with number)  
State Route (circle with number)

(DRIFTWOOD)



THIS MAP COMPLIES WITH NATIONAL MAP ACCURACY STANDARDS  
FOR SALE BY U. S. GEOLOGICAL SURVEY, WASHINGTON 25, D. C.  
A FOLDER DESCRIBING TOPOGRAPHIC MAPS AND SYMBOLS IS AVAILABLE ON REQUEST

U.S.G.S.  
FILE COPY  
TOPOGRAPHIC DIVISION

CONRAD, PA.  
N4130-W7745/15  
1947

AUG 20 1958

4395