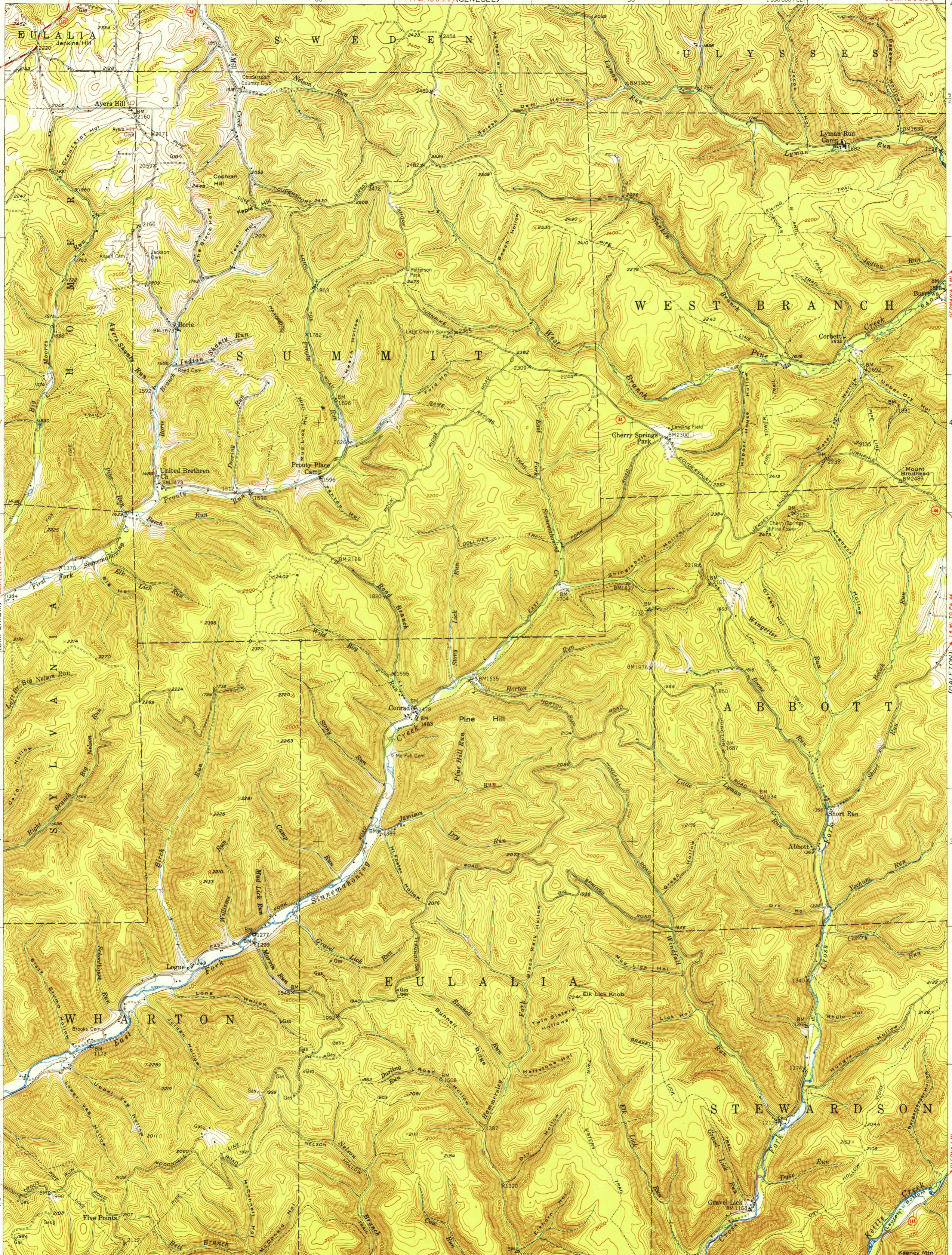
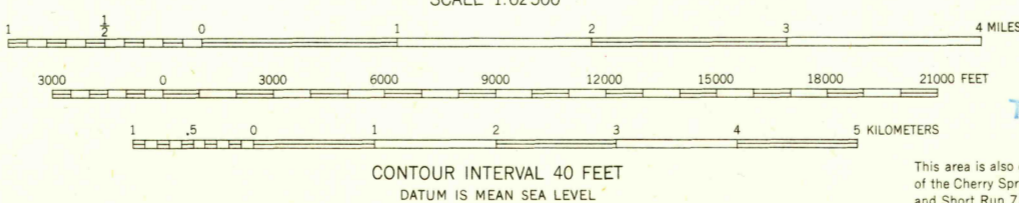


78°00' 41°45' 55' 50' 77°45' 1990 000 FEET 3.5 MI. TO U.S. 6



U.S.G.S.
FILE COPY
Imposition size 14x18 in.

Maped, edited, and published by the Geological Survey
Control by USGS and USC&GS
Topography from aerial photographs by multiplex methods
Aerial photographs taken 1945. Field check 1947
Polyconic projection. 1927 North American datum
10,000-foot grid based on Pennsylvania coordinate system,
north zone



USGS
Historical File
Topographic Division

ROAD CLASSIFICATION	
Heavy-duty	4 LANE 16 LANE Light-duty
Medium-duty	4 LANE 16 LANE Unimproved dirt
U.S. Route	State Route

U.S.G.S.
FILE COPY
Imposition size 14x18 in.

CONRAD, PA.
N4130-W7745/15
1947

THIS MAP COMPLIES WITH NATIONAL MAP ACCURACY STANDARDS
FOR SALE BY U. S. GEOLOGICAL SURVEY, WASHINGTON 25, D. C.
A FOLDER DESCRIBING TOPOGRAPHIC MAPS AND SYMBOLS IS AVAILABLE ON REQUEST