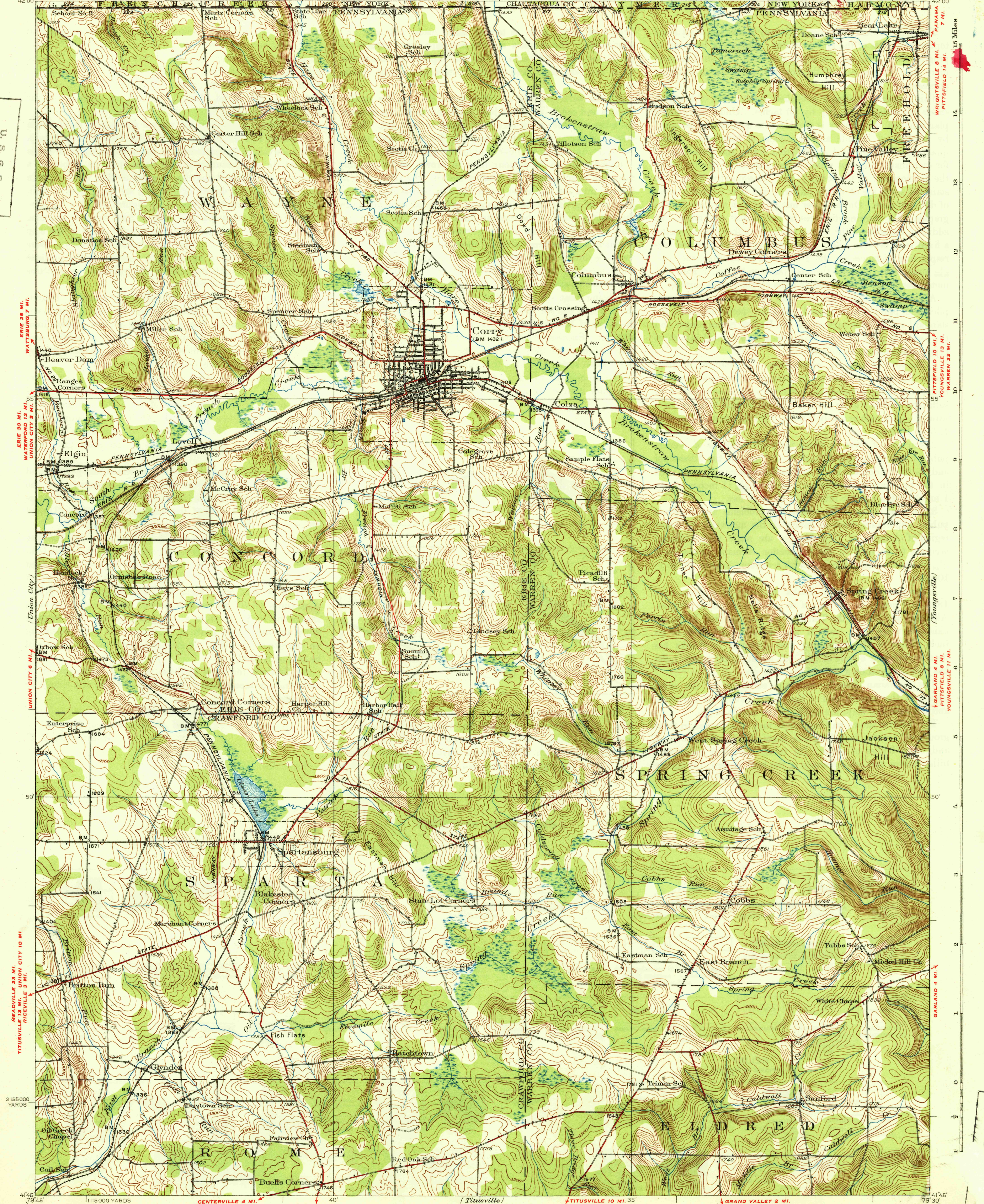


U. S. G. S.
FILE COPY
Imposition and Editing.

19 Miles
18
17
16
15
14
13
12
11
10
9
8
7
6
5
4
3
2
1
0
1
2
3
4
5
6
7
8
9
10
11
12
13
14
15
16
17
18
19 Miles



ERIE 30 MI.
WATERFORD 13 MI.
UNION CITY 5 MI.

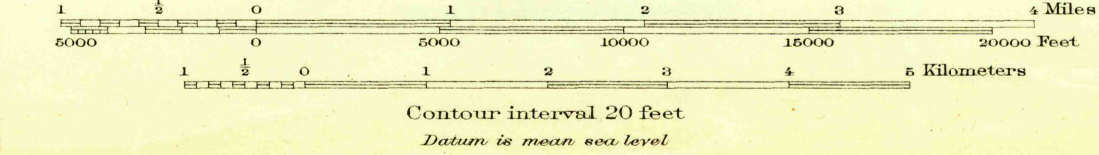
UNION CITY 6 MI.

MEADVILLE 23 MI.
TITUSVILLE 13 MI.
UNION CITY 10 MI.
RICEVILLE 3 MI.

TITUSVILLE 4 MI.
TITUSVILLE 9 MI.
TITUSVILLE 10 MI. 35

1115000 YARDS
Topography by J.I. Gayetty, F.H. Sargent, R.F. Hamke, and J.P. Rydeen
Control by U.S. Geological Survey, Pennsylvania State Highway Department, and Pennsylvania Railroad
Surveyed in 1929

U. S. G. S.
FILE COPY
Imposition and Editing.



USGS
Historical File
Topographic Division
Polyconic projection, North American datum
5000 yard grid based upon U.S. zone system, B
1931
HARD IMPERVIOUSLY SURFACED ROADS
OTHER MAIN TRAVELED ROADS

CORRY, PA., N.Y.
Edition of 1932
JUN 17 1962 (3690)
2655-0750/99