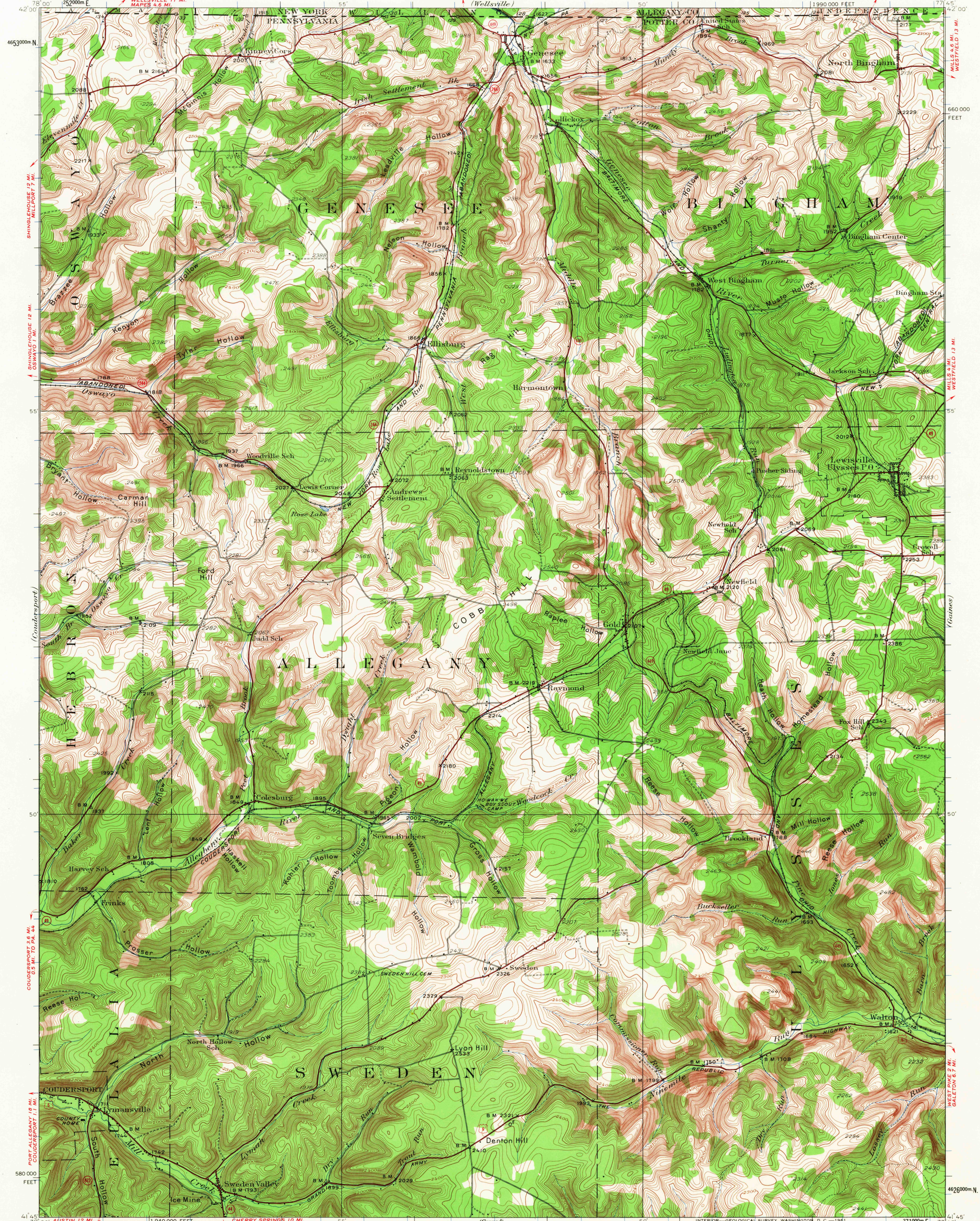


UNITED STATES
DEPARTMENT OF THE INTERIOR
GEOLOGICAL SURVEY

STATE OF PENNSYLVANIA
REPRESENTED BY THE
DEPARTMENT OF INTERNAL AFFAIRS
TOPOGRAPHIC AND GEOLOGIC SURVEY

PENNSYLVANIA-NEW YORK
GENESEEE QUADRANGLE



Topography by J.I. Gayetty, Olinus Smith,
J.H. Wilke, J.K. Bailey, and G.A. Mock
Culture and drainage in part compiled from aerial photographs
taken by Air Corps U.S. Army
Surveyed in 1932

ROAD CLASSIFICATION
Heavy-duty ——— Light-duty ———
Unimproved dirt - - - - -
U.S. Route State Route

SCALE 1:62,500
1 2 3 4 MILES
3000 6000 9000 12000 15000 18000 21000 FEET
1 2 3 4 5 KILOMETERS
CONTOUR INTERVAL 20 FEET
DATUM IS MEAN SEA LEVEL

USGS
Historical File
Topographic Division
U.S.G.S.
Polyconic projection. 1927 North American datum
10,000-foot grid based on Pennsylvania (North)
rectangular coordinate system
1000-meter Universal Transverse Mercator grid ticks,
zone 18, shown in blue

FOR SALE BY U. S. GEOLOGICAL SURVEY, WASHINGTON 25, D. C.
A FOLDER DESCRIBING TOPOGRAPHIC MAPS AND SYMBOLS IS AVAILABLE ON REQUEST

FILE COPY
TOPOGRAPHIC DIVISION

GENESEEE, PA.—N. Y.
N4145—W7745/15
1932

3070
OCT 26 1967
T10