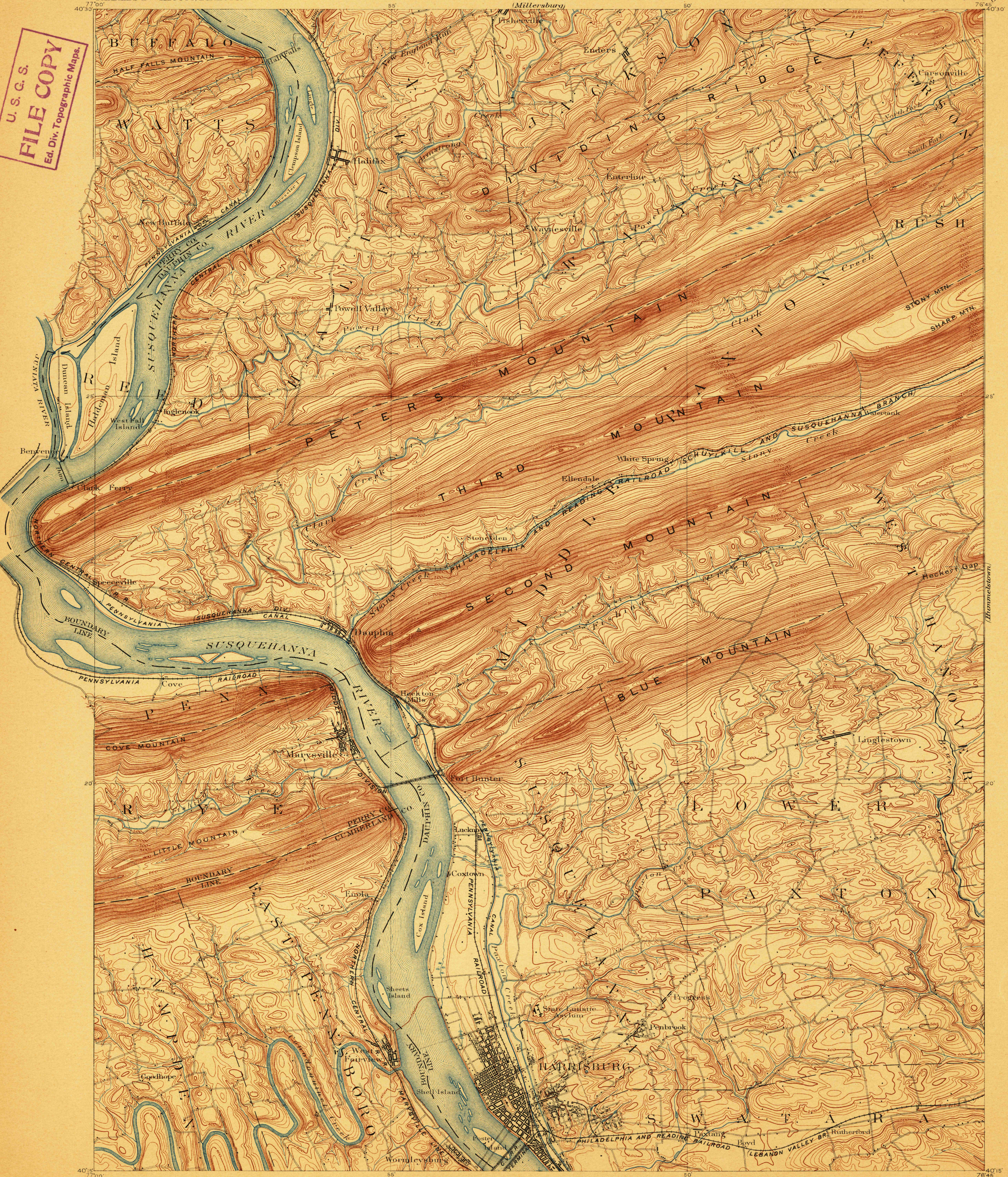


U.S.G.S.  
**FILE COPY**  
Ed. Div. Topographic Maps.



Henry Gannett, Chief Topographer.  
Marcus Baker, Topographer in charge.  
Triangulation by U.S. Coast and Geodetic Survey.  
Topography by Wm. Kramer.  
Surveyed in 1890.

Scale 42100  
1 2 3 4 Miles  
5 Kilometers  
Contour interval 20 feet.  
Datum is mean sea level.

U.S.G.S.  
**FILE COPY**

U.S. Geological Survey,  
Historical File  
Topographic Division  
Recd. APR 12 1900 2133  
Ed. Div. Topographic Maps.

Harrisburg  
PA.