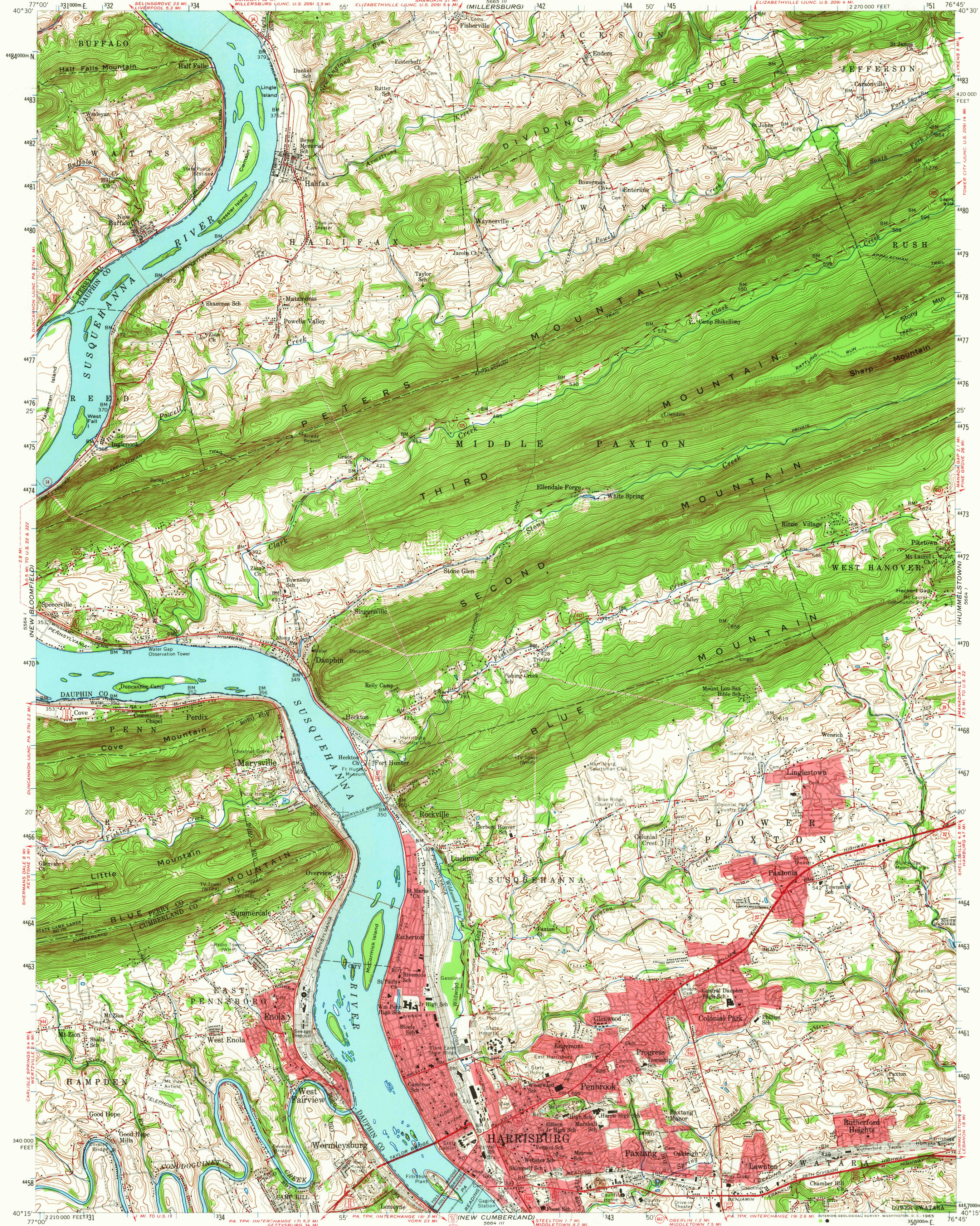


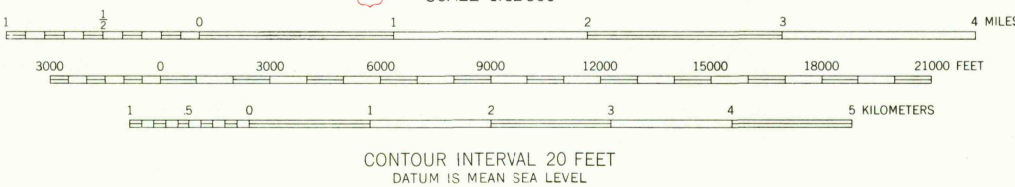
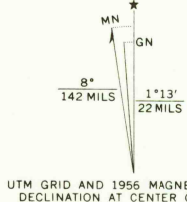
UNITED STATES  
DEPARTMENT OF THE INTERIOR  
GEOLOGICAL SURVEY

UNITED STATES  
DEPARTMENT OF THE ARMY  
CORPS OF ENGINEERS  
(MILLERSBURG)

HARRISBURG QUADRANGLE  
PENNSYLVANIA  
15 MINUTE SERIES (TOPOGRAPHIC)



Map by the Army Map Service  
Edited and published by the Geological Survey  
Control by USGS, USC&GS, USCE, and USSCS  
Topography from aerial photographs by photogrammetric methods. Aerial photographs taken 1942. Field check 1943.  
Culture revised by the Geological Survey 1956.  
Polyconic projection. 1927 North American datum.  
10,000-foot grid based on Pennsylvania coordinate system, south zone.  
1000-meter Universal Transverse Mercator grid ticks, zone 18, shown in blue.  
Red tint indicates areas in which only landmark buildings are shown.



ROAD CLASSIFICATION  
Heavy-duty ——— Light-duty ———  
Medium-duty ——— Unimproved dirt ———  
U.S. Route ——— State Route ———  
This area also covered by 1:24,000 scale maps of Harrisburg East, Harrisburg West, Halifax, and Enders 7.5 minute quadrangles, surveyed 1947.  
HARRISBURG, PA.  
N4015-W7645/15  
1956  
AMS 5664 IV-SERIES V731

FOR SALE BY U.S. GEOLOGICAL SURVEY, WASHINGTON, D. C. 20242  
A FOLDER DESCRIBING TOPOGRAPHIC MAPS AND SYMBOLS IS AVAILABLE ON REQUEST

SEP 2 1965  
40,000