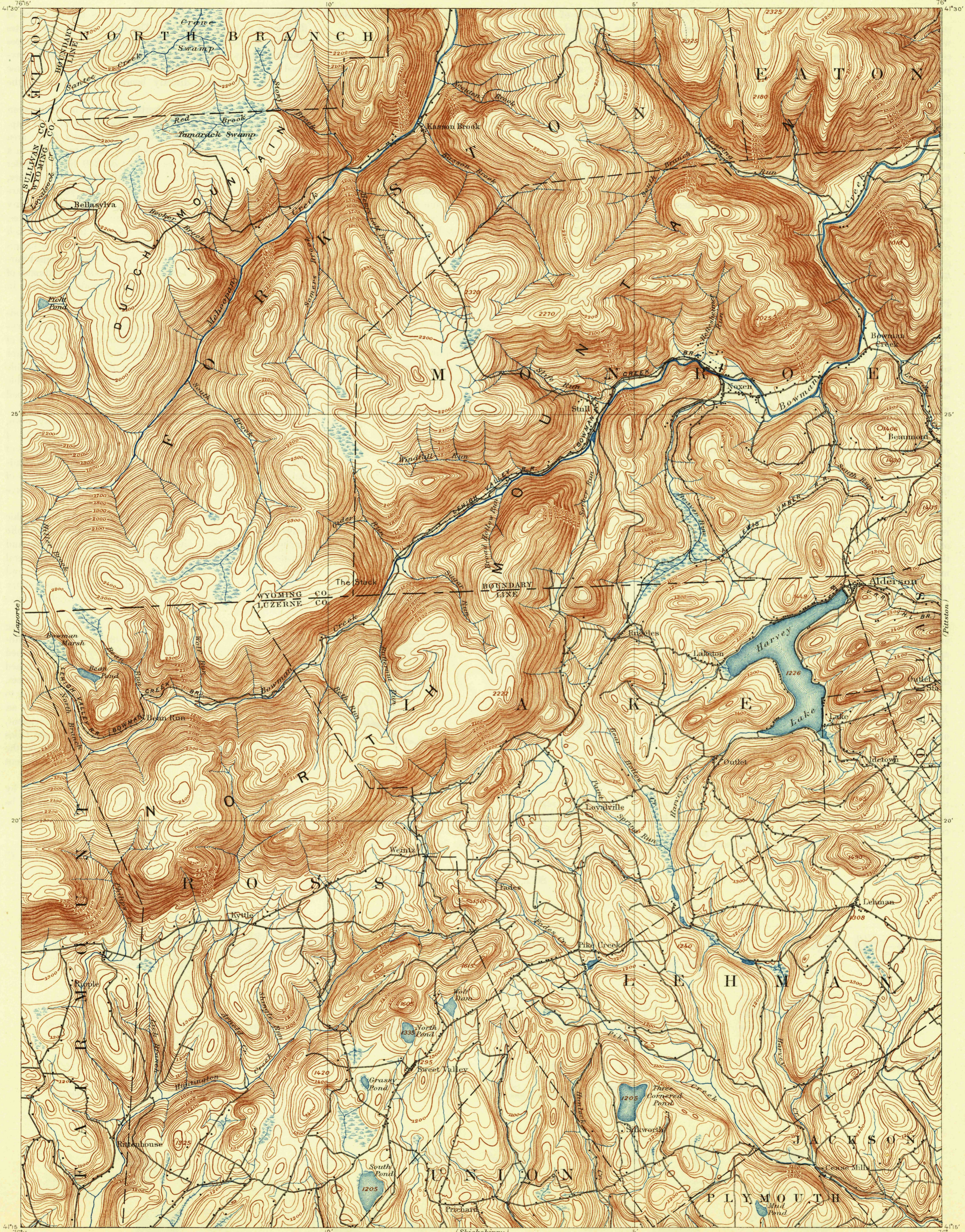


U.S.G.S.
FILE COPY
Inspection and Editing.



15 Miles
14
13
12
11
10
9
8
7
6
5
4
3
2
1
0
1
2
3
4
5
6
7
8
9
10
11
12
13
14
15 Miles

Henry Gannett, Chief Topographer.
H. M. Wilson, Geographer in charge.
Triangulation by S. S. Gannett.
Topography by M. B. Lambert.
Surveyed in 1891.

Scale 62500
Contour Interval 20 feet
Datum is mean Sea level

U.S.G.S.
Historical File
Topographic Division

This map made from surveys
without spirit level control.
Adjacent maps with spirit level
control may not join this sheet
exactly.

Edition of July 1893, reprinted 1938
Polyconic projection.

HARVEY LAKE, PA.

U.S.G.S.
FILE COPY
Inspection and Editing.