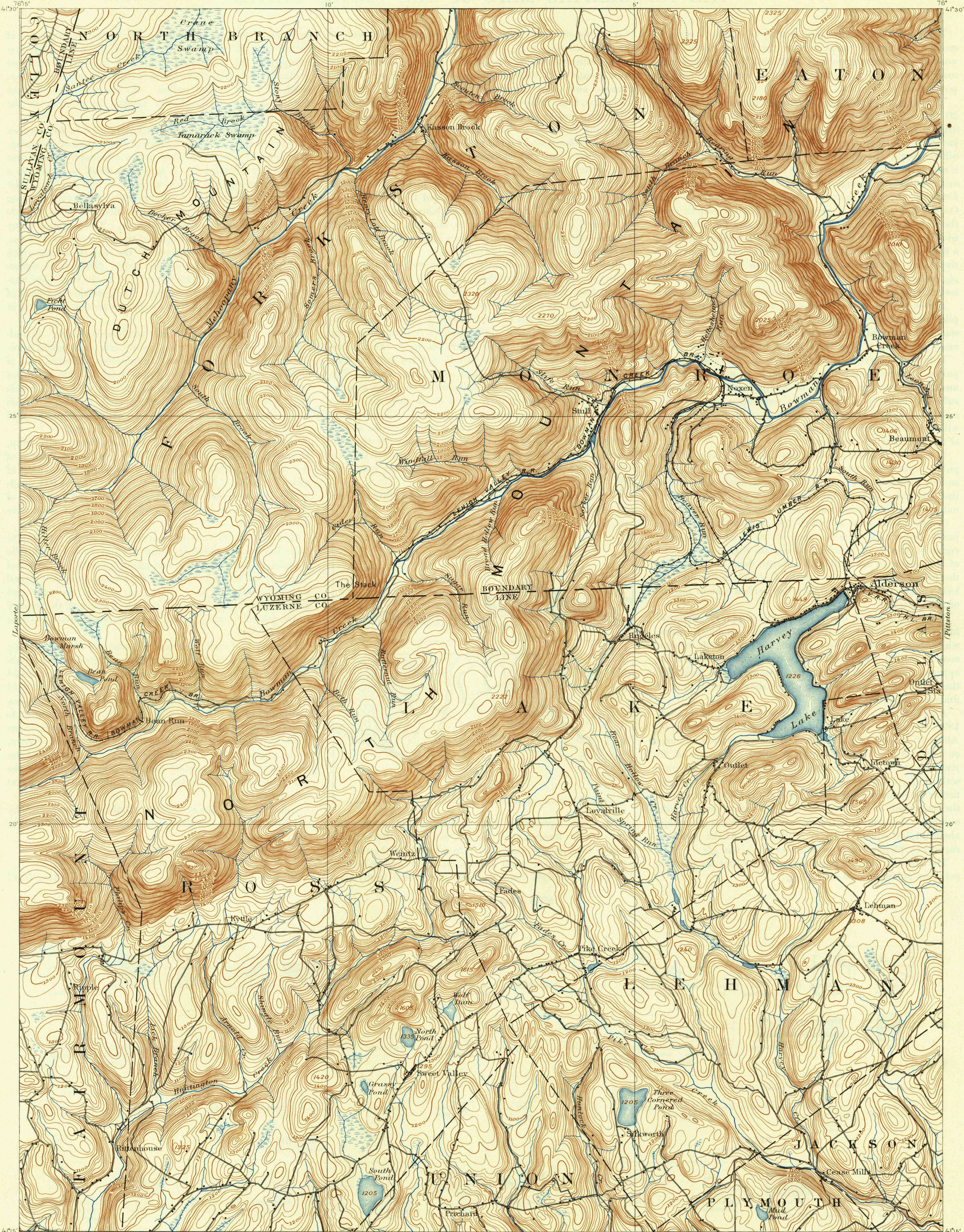
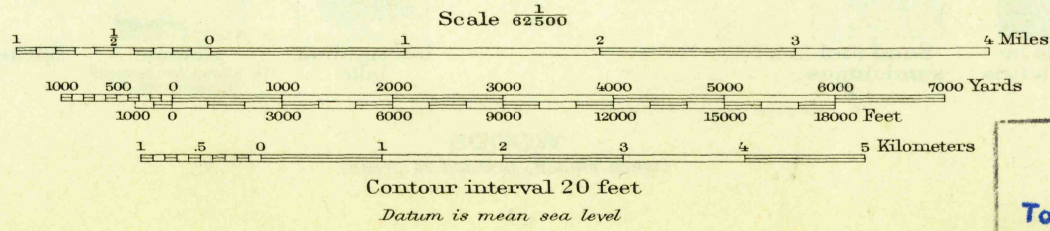


U.S.G.S.  
FILE COPY  
Inspection and Editing.



Henry Gannett, Chief Topographer.  
H. M. Wilson, Geographer in charge.  
Triangulation by S. S. Gannett.  
Topography by M. B. Lambert.  
Surveyed in 1891.



Edition of July 1893, reprinted 1946.  
Polyconic projection.  
This area surveyed by reconnaissance  
methods. Maps of adjacent areas surveyed  
by modern methods may not join this sheet  
exactly.

USGS  
Historical Files  
Topographic Division  
Inspection and Editing.

HARVEY LAKE, PA.  
N4115-W7600/15

Name changed to Harvey Lake  
JTB and Aug 1950  
AUG 19 1946

2115