

WILLIAMSPORT 15 MI.
MONTICELLO 10 MI.
MUNCY VALLEY 12 MI.
PICTURE ROCKS 2 MI.

STATE OF PENNSYLVANIA
DEPARTMENT OF INTERNAL AFFAIRS
TOPOGRAPHIC AND GEOLOGIC SURVEY

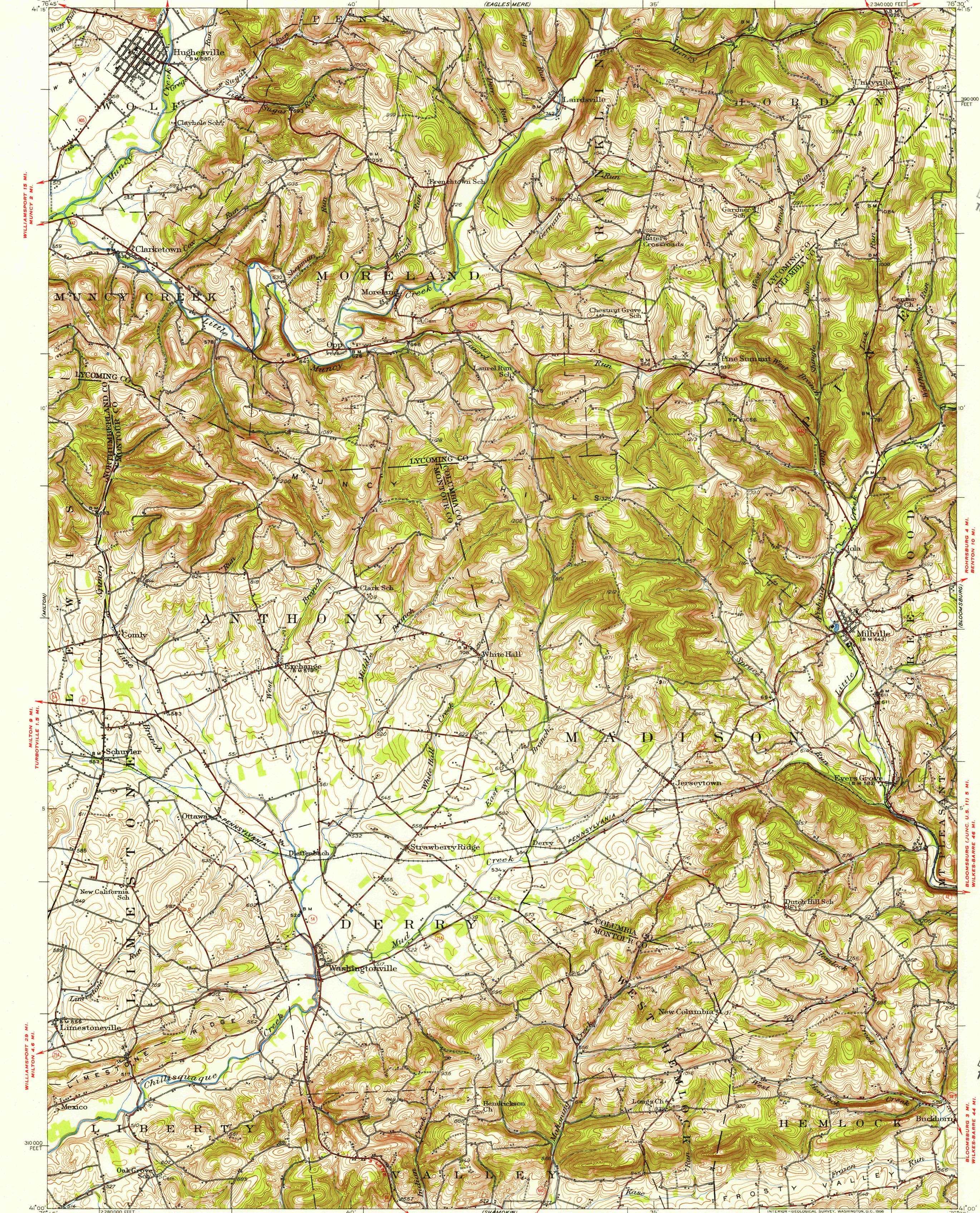
TOWANDA 47 MI.
MUNCY VALLEY 9.5 MI.
HUGHESVILLE QUADRANGLE
PENNSYLVANIA
15-MINUTE SERIES (TOPOGRAPHIC)

UNITED STATES
DEPARTMENT OF THE INTERIOR
GEOLOGICAL SURVEY

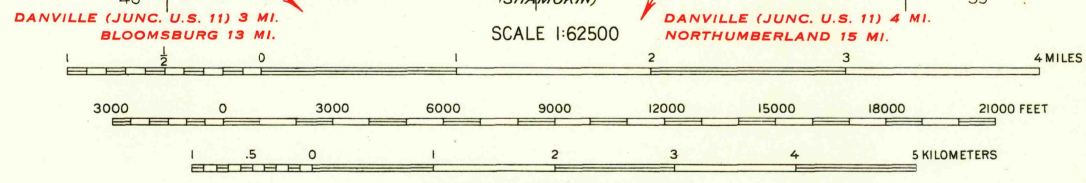
(EAGLES WERE)

U.S.G.S.
FILE COPY
TOPOGRAPHIC DIVISION

U.S.G.S.
FILE COPY
TOPOGRAPHIC DIVISION



Mapped, edited, and published by the Geological Survey
Control by USGS and USC&GS
Topography by plane-table surveys 1930-1931
Revised 1953
Polyconic projection, 1927 North American datum
10000-foot grid based on Pennsylvania coordinate system,
north zone



ROAD CLASSIFICATION
Heavy-duty 4 LANE, 6 LANE Light-duty
Medium-duty 4 LANE, 6 LANE Unimproved dirt
U.S. Route
State Route

FOR SALE BY U.S. GEOLOGICAL SURVEY, WASHINGTON 25, D. C.
A FOLDER DESCRIBING TOPOGRAPHIC MAPS AND SYMBOLS IS AVAILABLE ON REQUEST

USGS
Historical File
Topographic Division
HUGHESVILLE PA
N4100-W7630/15
1953

MAR 3 1956
2570