

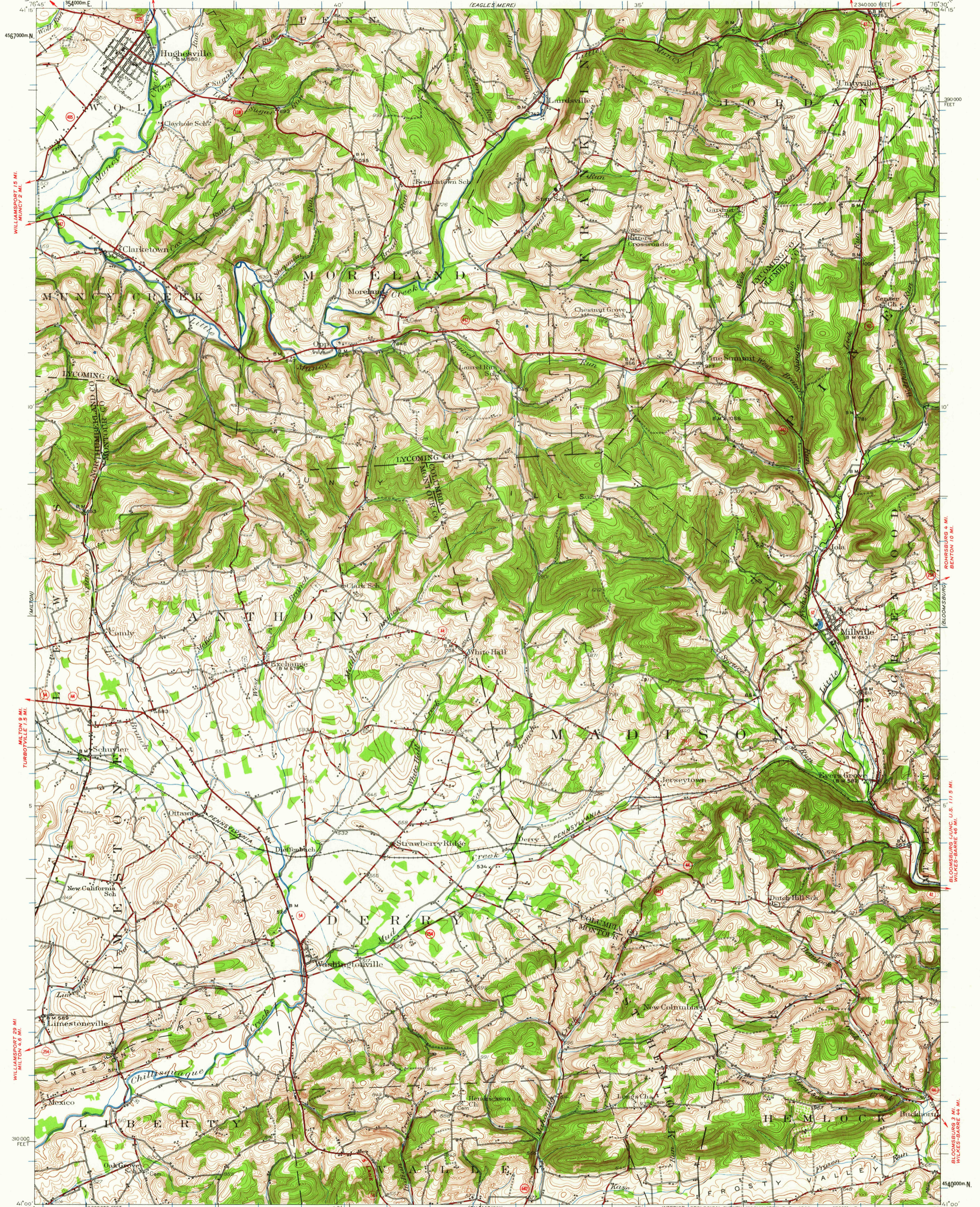
WILLIAMSPORT 15 MI.
MONTICELLO 10 MI.
MUNICIPALITY 12 MI.
PICTURE ROCKS 2 MI.

STATE OF PENNSYLVANIA
DEPARTMENT OF INTERNAL AFFAIRS
TOPOGRAPHIC AND GEOLOGIC SURVEY
(EAGLE'S MERE)

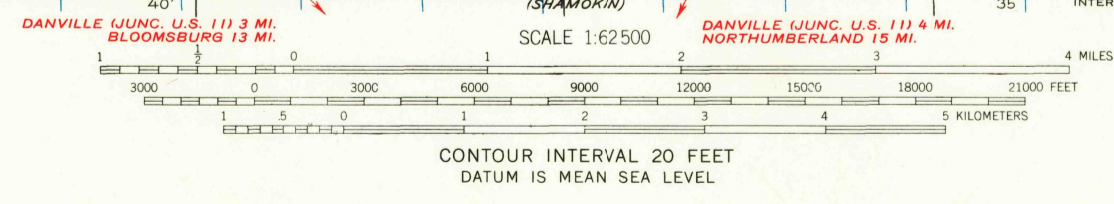
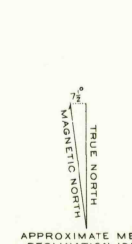
TOWANDA 47 MI.
MUNICIPALITY 4.5 MI.
RED ROCK 12 MI.
WILKES-BARRE 40 MI.

UNITED STATES
DEPARTMENT OF THE INTERIOR
GEOLOGICAL SURVEY

HUGHESVILLE QUADRANGLE
PENNSYLVANIA
15-MINUTE SERIES (TOPOGRAPHIC)
2340000 FEET



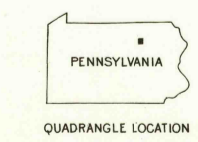
Mapped, edited, and published by the Geological Survey
Control by USGS and USC&GS
Topography by plane-table surveys 1930-1931
Revised 1953
Polyconic projection, 1927 North American datum
10000-foot grid based on Pennsylvania coordinate system,
north zone
1000-meter Universal Transverse Mercator grid ticks,
zone 18, shown in blue



Historical File
Topographic Division

ROAD CLASSIFICATION

Heavy-duty	Light-duty
Medium-duty	Unimproved dirt
U. S. Route	State Route



FOR SALE BY U. S. GEOLOGICAL SURVEY, WASHINGTON 25, D. C.
A FOLDER DESCRIBING TOPOGRAPHIC MAPS AND SYMBOLS IS AVAILABLE ON REQUEST

U.S.G.S.
FILE COPY
TOPOGRAPHIC DIVISION
HUGHESVILLE PA
N4100-W7630/15
1953

OCT - 4 1962

4220