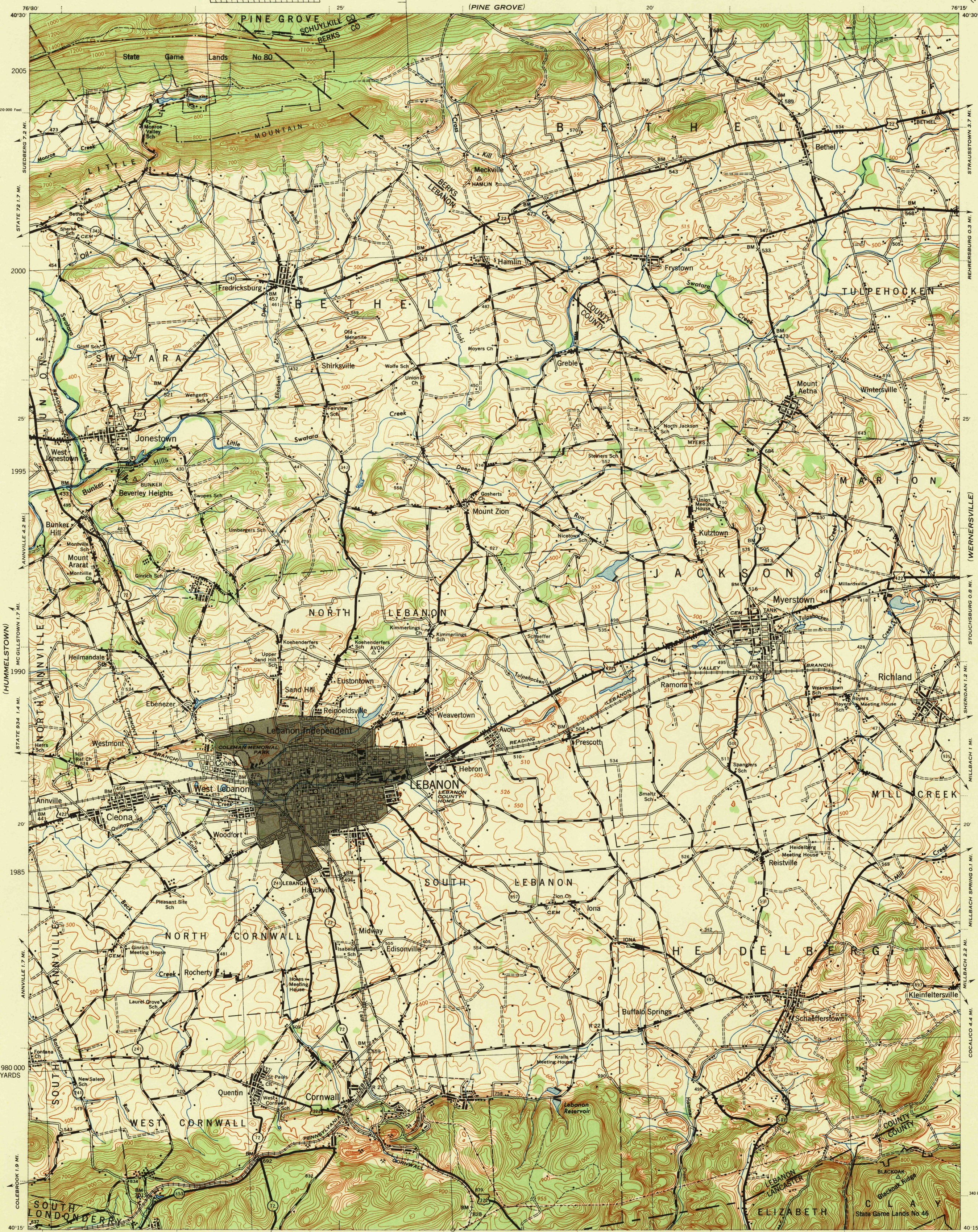


(LYKENS)

(POTTSVILLE)



Scale 1:62,500  
675 000 YARDS  
2 360 000 Feet  
680 MOUNT HOPE 2.5 MI.  
BRICKERVILLE 3.9 MI.  
ELIZABETH FURNACE GAP 0.4 MI.  
695  
2 410 000 Feet  
76 15'

Prepared under the direction of the Chief of Engineers, U. S. Army, 1942-43.  
Control by U.S.C. & G.S., U.S.G.S., U.S.E.D., S.C.S., Baker Engineering Co.,  
and Aero Service Corp.  
Topography by Aero Service Corp., (Brock Photogrammetric Method) Phila., Pa.  
Gray tint indicates areas in which only landmark buildings are shown.  
Polyconic Projection, North American Datum 1927.

ROAD CLASSIFICATION 1943  
Dependable hard-surface, heavy-duty road. Loose-surface graded, dry weather road. U. S. Route 160  
Secondary, hard-surface, all-weather road. Dirt road. State Route 30  
More than two lanes indicated by note along road with tick at point of change. 3 LANE & 4 LANE

CONTOUR INTERVAL 20 FEET  
DATUM IS MEAN SEA LEVEL  
FIVE THOUSAND YARD GRID COMPUTED FROM "GRID SYSTEM FOR PROGRESSIVE MAPS IN THE U. S. ZONE 'A' - U. S. G. S. SPECIAL PUBLICATION NO. 99"  
THE LAST THREE DIGITS OF THE GRID NUMBERS ARE OMITTED  
PENNSYLVANIA STATE GRID ZONE SOUTH IS INDICATED BY DOTTED TICKS OUTSIDE THE NEXT LINE AT 10 000 FT. INTERVALS  
NOTE: OFFICERS USING THIS MAP WILL WANT PERSON CORRECTIONS AND ADDITIONS WHO COME TO THEIR ATTENTION AND MAIL THEM TO THE CHIEF OF ENGINEERS, WASHINGTON, D. C.

FILE COPY  
Inspection and Editing

USCS  
Historical File  
Topographic Division

LEBANON, PENNA.  
N4015-W7615/15

(NEW HOLLAND)