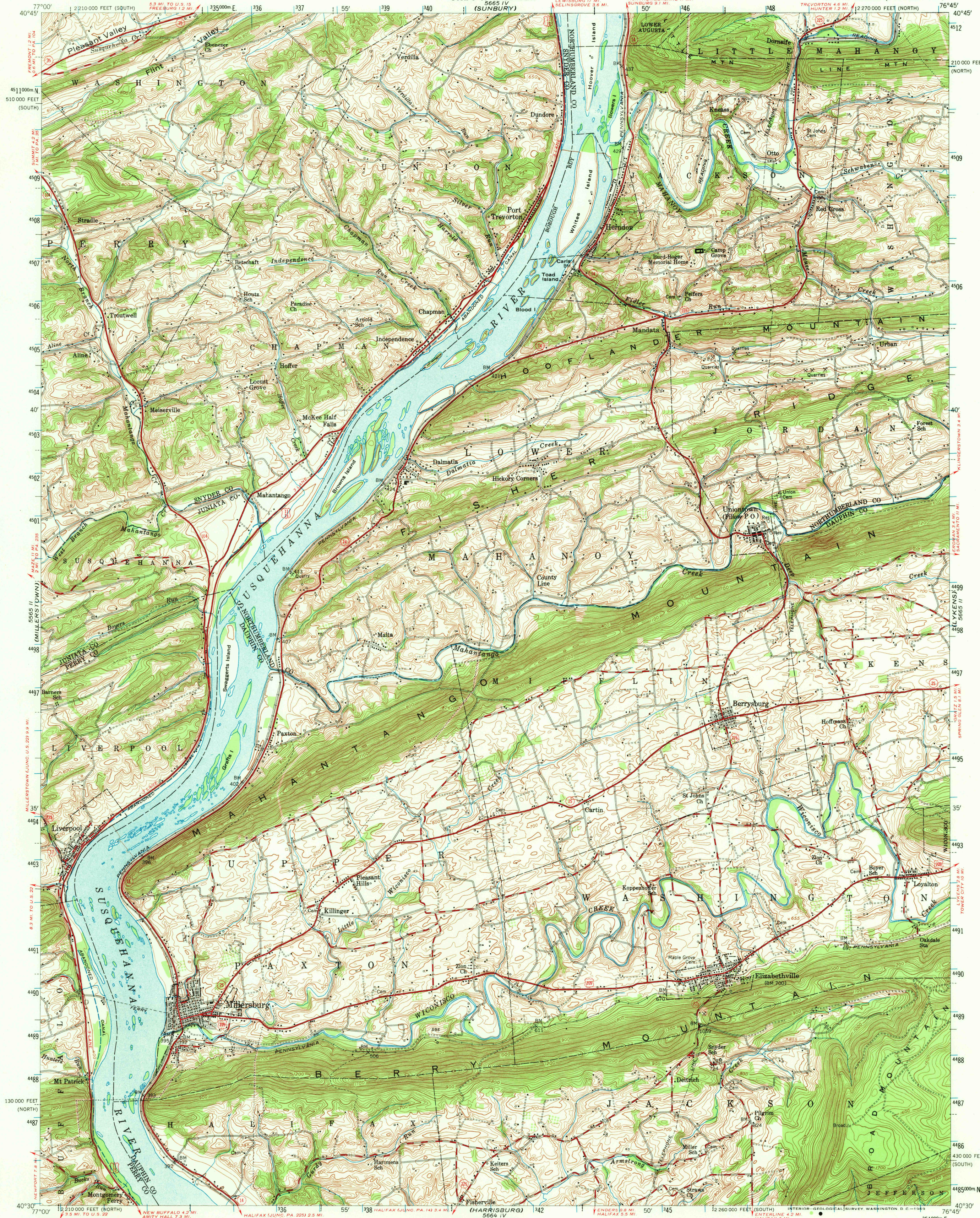


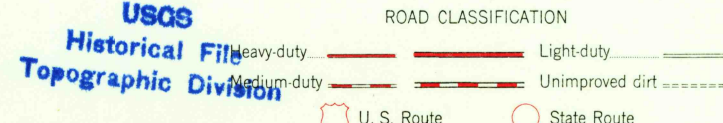
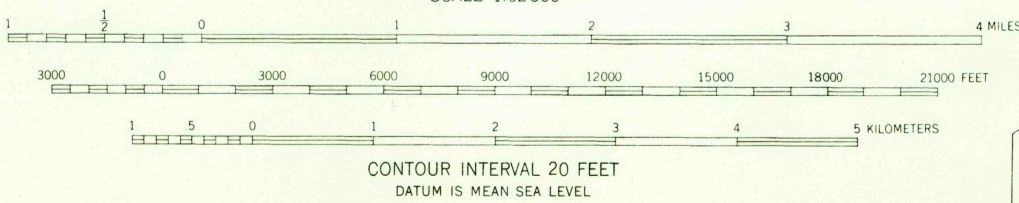
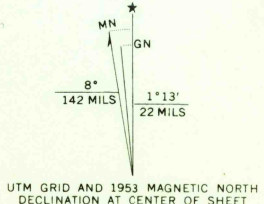
UNITED STATES
DEPARTMENT OF THE INTERIOR
GEOLOGICAL SURVEY

UNITED STATES
DEPARTMENT OF THE ARMY
CORPS OF ENGINEERS
(SUNBURY)

MILLERSBURG QUADRANGLE
PENNSYLVANIA
15 MINUTE SERIES (TOPOGRAPHIC)



Map by the Army Map Service
Edited and published by the Geological Survey
Control by USGS and USC&GS
Topography from aerial photographs by stereophotogrammetric methods. Aerial photographs taken 1943. Field check 1943
Culture revised by the Geological Survey 1953
Polyconic projection. 1927 North American datum
10,000-foot grids based on Pennsylvania coordinate system, north and south zones
Unchecked elevations are shown in brown
1000-meter Universal Transverse Mercator grid ticks, zone 18, shown in blue



U.S.G.S.
FINE COPY
TOPOGRAPHIC DIVISION

MILLERSBURG, PA.
N4030-W7645/15
1953
AMS 5665 III-SERIES V731

FOR SALE BY U.S. GEOLOGICAL SURVEY, WASHINGTON, D. C. 20242
A FOLDER DESCRIBING TOPOGRAPHIC MAPS AND SYMBOLS IS AVAILABLE ON REQUEST

3385
JAN 23 1969