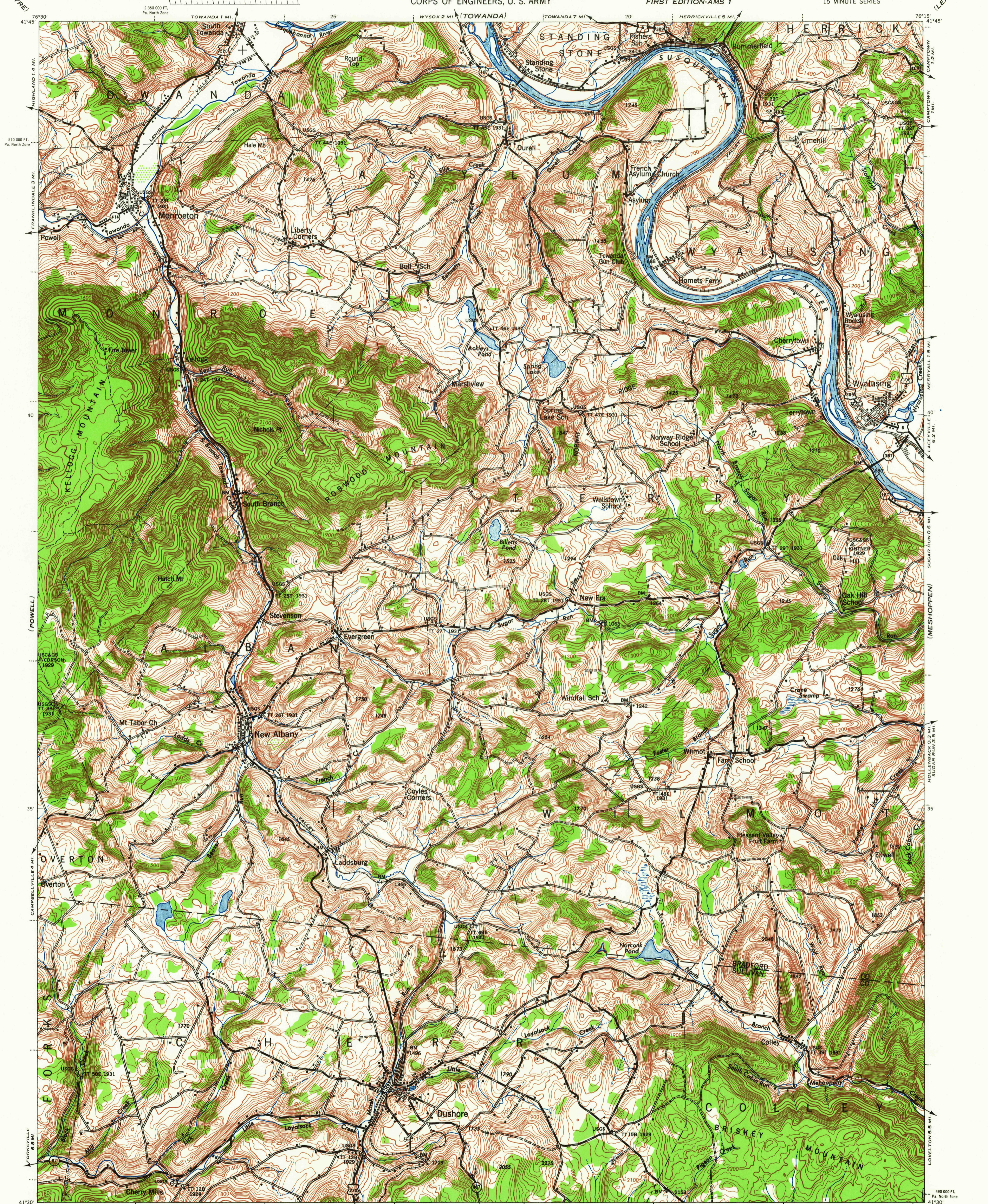


(SAYRE)

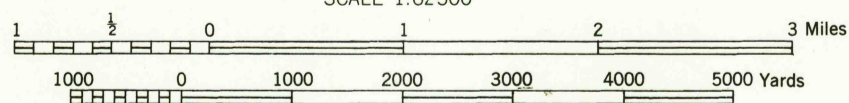
(LERAYSVILLE)



First Edition 1943
 Prepared under the direction of the Chief of Engineers,
 U. S. Army, 1943.
 Compiled by Fairchild Aerial Surveys, Inc.,
 Los Angeles, California.
 Topography by Fairchild Aerial Surveys, Inc.,
 by Stereophotogrammetric Process.
 Control by U. S. C. & G. S. and U. S. G. S.
 Aerial Photography by Fairchild Aerial Surveys, Inc., 1943.
 Polyconic Projection, North American Datum 1927.

ROAD CLASSIFICATION 1943

Dependable hard-surface,
 heavy-duty road. U. S. Route
 Loose-surface graded,
 heavy-duty road. State Route
 Secondary, hard-surface,
 all-weather road. Dirt Road
 More than two lanes indicated by note along road with tick at point of change. 3 LANE 4 LANE



CONTOUR INTERVAL 20 FEET
 DATUM IS MEAN SEA LEVEL

REPRINTED FROM MILITARY EDITION FOR CIVIL USE

SOLD AND DISTRIBUTED BY U. S. GEOLOGICAL SURVEY, WASHINGTON 25, D. C.

APPROXIMATE MEAN DECLINATION 1943
 FOR CENTER OF SHEET
 NO ANNUAL MAGNETIC CHANGE

USGS
 Historical File
 Topographic Division

U.S.G.S.
 COPY
 TOPOGRAPHIC DIVISION

MONROETON, PA.
 N4130-W7615/15
 1943

NOV 4 1964

4020

(EAGLES MERE)

(HARVEY LAKE)