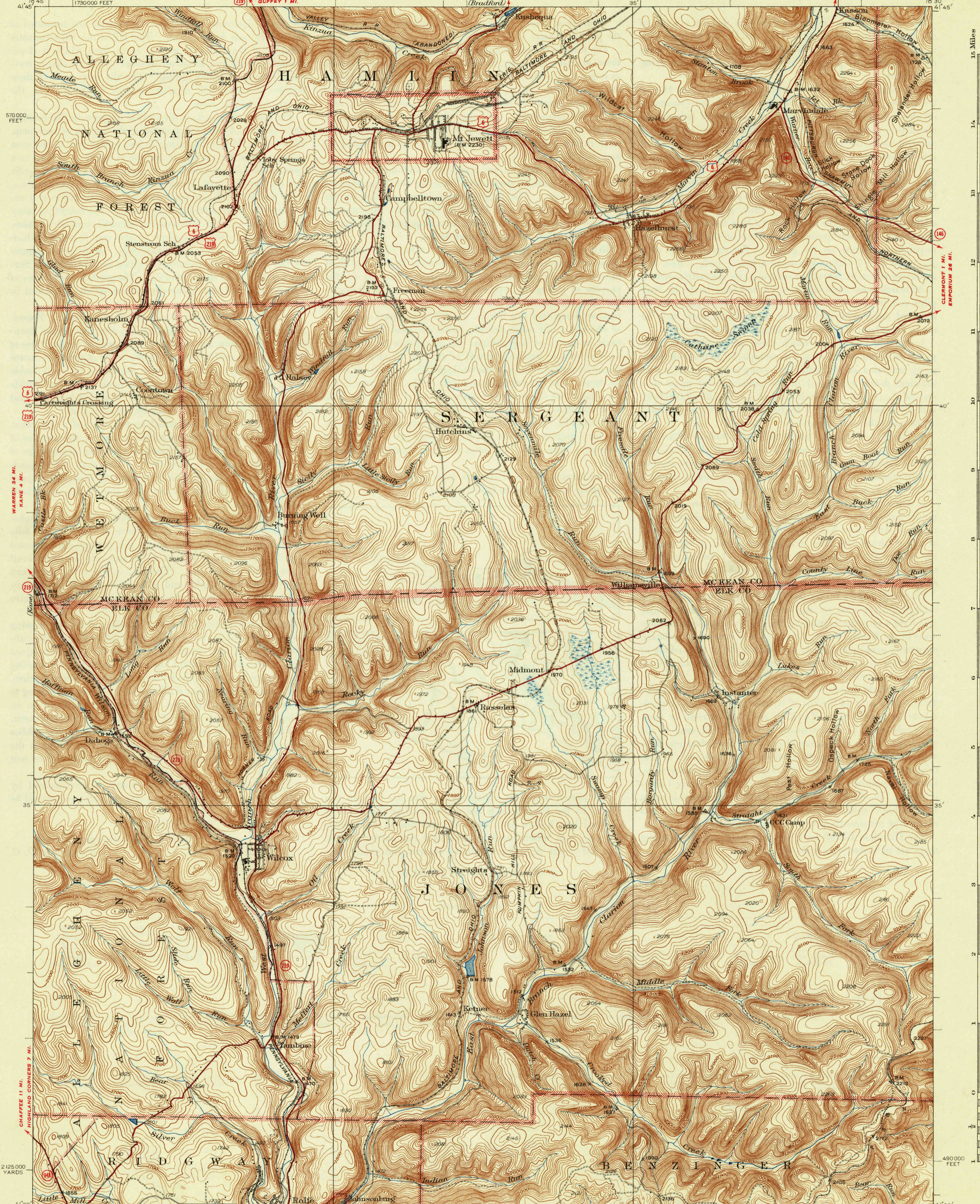


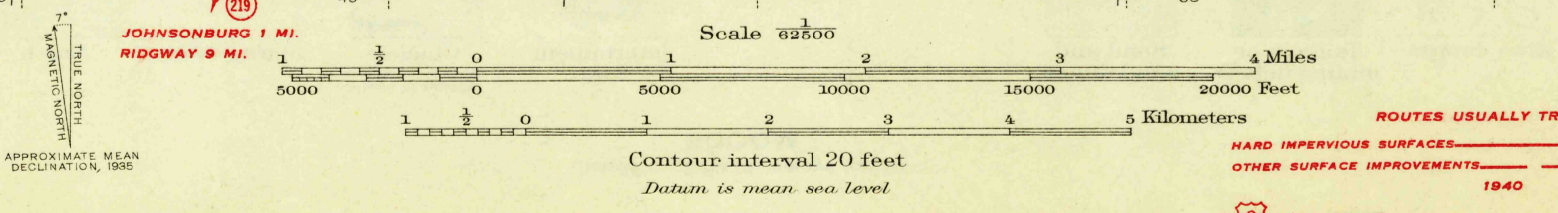
36f



15 Miles  
14  
13  
12  
11  
10  
9  
8  
7  
6  
5  
4  
3  
2  
1  
0  
-1  
-2  
-3  
-4  
-5  
-6  
-7  
-8  
-9  
-10  
-11  
-12  
-13  
-14  
-15  
490 000 FEET

36f

Topography by J.I. Gayetty, W.C. Thompson,  
S.E. Clement, and R.E. Amidon  
Surveyed in 1934-1935  
RIDGEWAY 7 MI.  
BROCKWAY 25 MI.



Polyconic projection, 1927 North American datum  
5000 yard grid based on U.S. zone system, B  
10000 foot grid based on Pennsylvania (North)  
rectangular coordinate system

ROUTES USUALLY TRAVELED  
HARD IMPROVED SURFACES  
OTHER SURFACE IMPROVEMENTS  
1940  
2 U. S. ROUTE  
3 STATE ROUTE  
MT. JEWETT, PA.  
Edition of 1940  
N4130-W7830/15