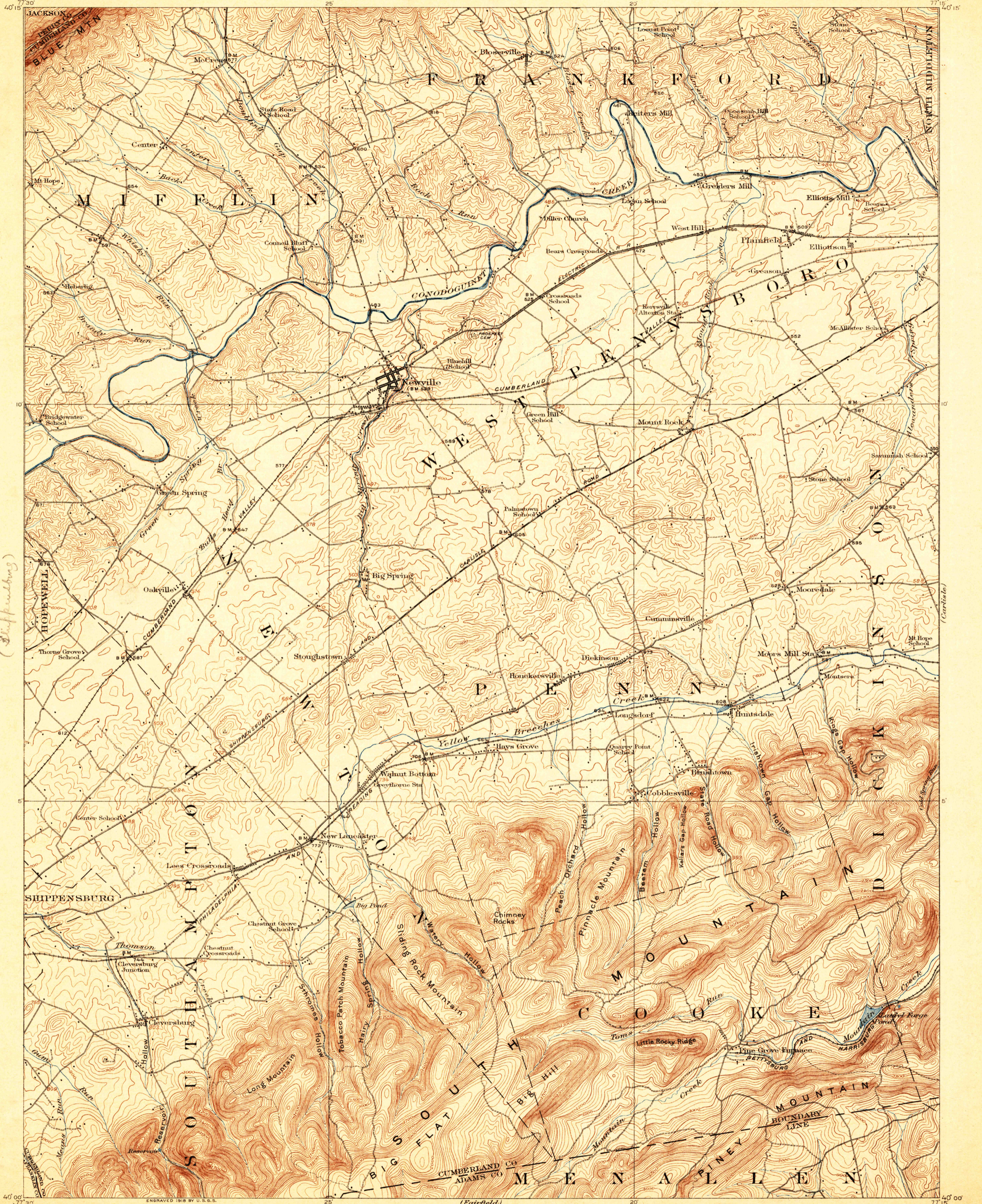


DEPARTMENT OF THE INTERIOR  
FRANKLIN K. LANE, SECRETARY  
U. S. GEOLOGICAL SURVEY  
GEORGE OTIS SMITH, DIRECTOR

TOPOGRAPHY

PENNSYLVANIA  
NEWVILLE QUADRANGLE



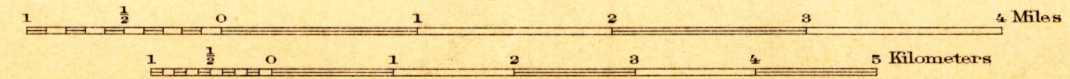
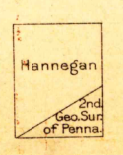
*(Shippensburg)*

*(Cocke)*

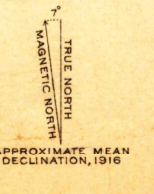
*(Chambersburg)*

*(Geopburg)*

W. H. Herron, Acting Chief Geographer.  
Frank Sutton, Geographer in charge.  
Topography by Second Geological Survey of Pennsylvania  
and Duncan Hannagan.  
Control by G. T. Hawkins, C. H. Davey, and D. T. McLaughlin.  
Surveyed in 1916.



Contour interval 20 feet.  
Datum is mean sea level.



Edition of 1919.

NEWVILLE

*filed*  
*W. R. C.*