

UNITED STATES  
DEPARTMENT OF THE INTERIOR  
GEOLOGICAL SURVEY

STATE OF PENNSYLVANIA  
REPRESENTED BY THE  
DEPARTMENT OF INTERNAL AFFAIRS  
TOPOGRAPHIC AND GEOLOGIC SURVEY

STATE OF NEW YORK  
REPRESENTED BY THE  
DEPARTMENT OF PUBLIC WORKS

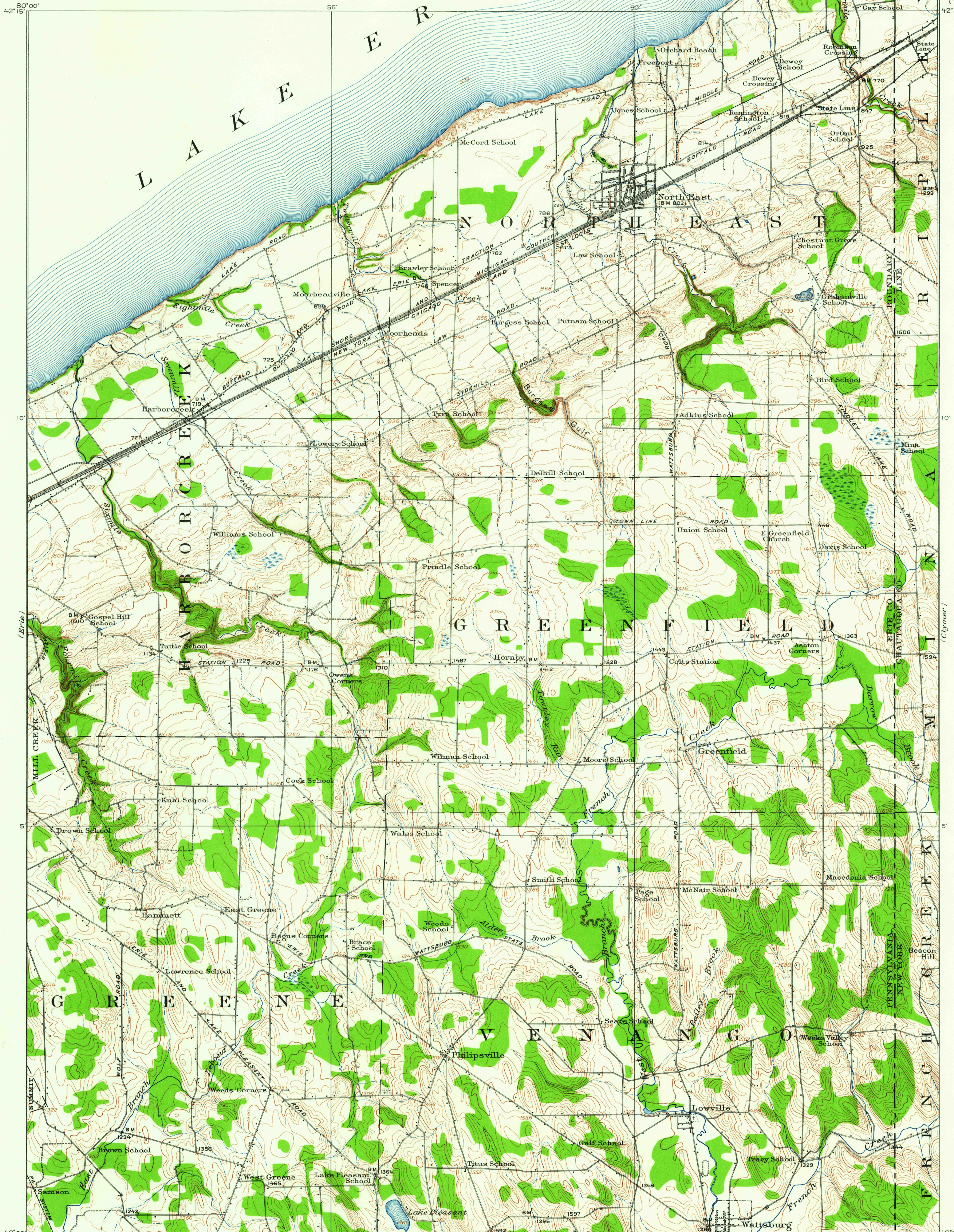
PENNSYLVANIA-NEW YORK  
NORTH EAST QUADRANGLE

42°00'

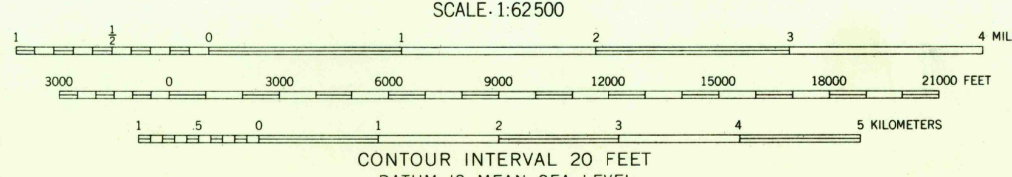
55°

50°

42°15'



R.B. Marshall, Chief Geographer.  
Frank Sutton, Geographer in charge.  
Topography by W.H. Griffin and J.F. McBeth.  
Control by Geo. T. Hawkins and K.W. Trimble.  
Surveyed in 1912-1913.



CONTOUR INTERVAL 20 FEET  
DATUM IS MEAN SEA LEVEL

Polyconic projection. 1927 North American datum  
USGS  
Historical File  
Topographic Division  
NORTH EAST, PA.-N.Y.  
N4200-W7945/15  
1913

FOR SALE BY U. S. GEOLOGICAL SURVEY, WASHINGTON 25, D. C.  
A FOLDER DESCRIBING TOPOGRAPHIC MAPS AND SYMBOLS IS AVAILABLE ON REQUEST

AUG - 9 1952

2585