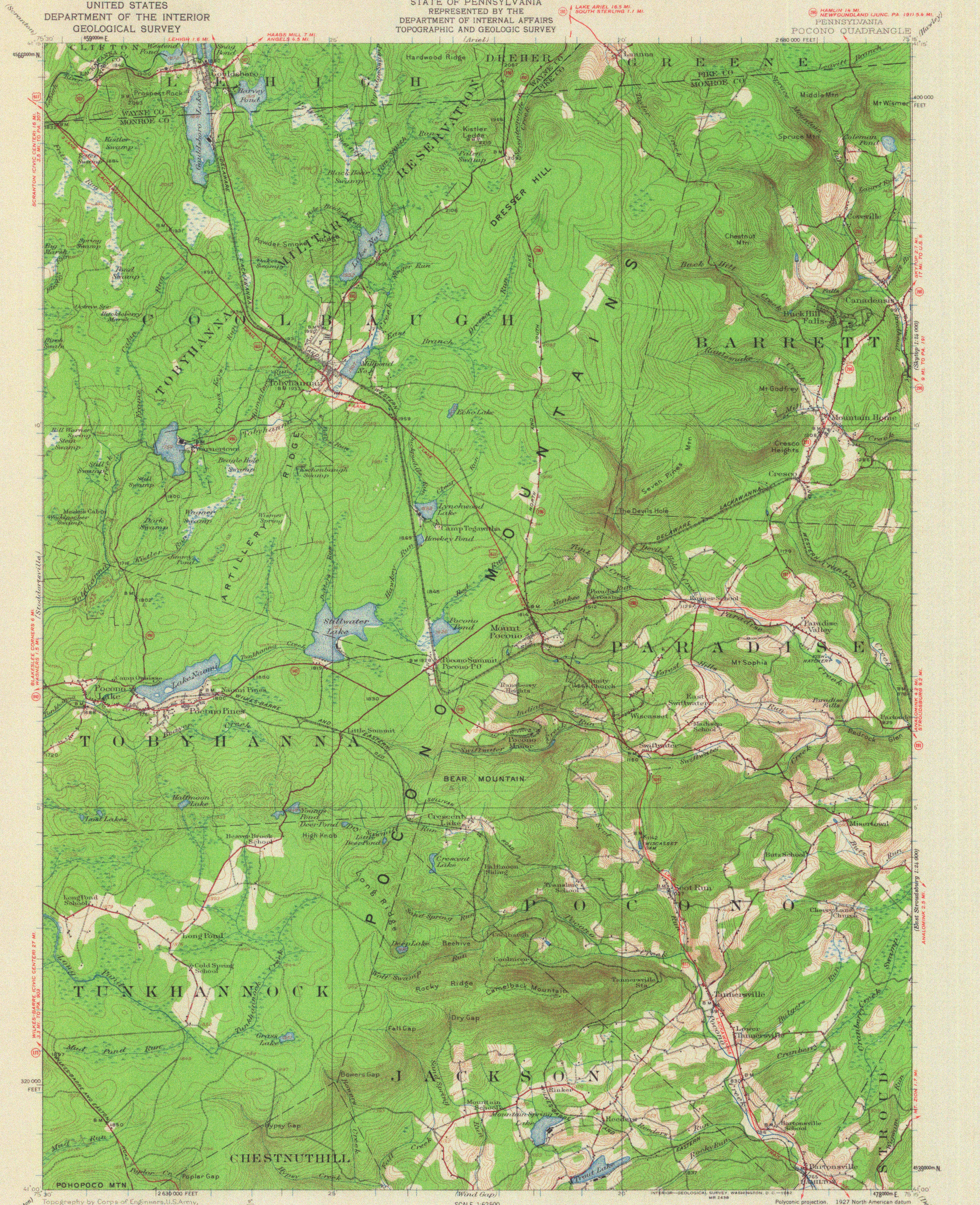


UNITED STATES
DEPARTMENT OF THE INTERIOR
GEOLOGICAL SURVEY

STATE OF PENNSYLVANIA
REPRESENTED BY THE
DEPARTMENT OF INTERNAL AFFAIRS
TOPOGRAPHIC AND GEOLOGIC SURVEY

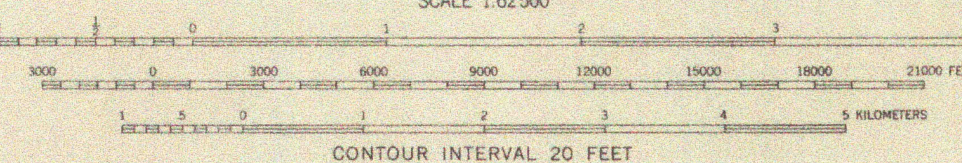
J-46
LAKE ARIEL 16.5 MI.
SOUTH STERLING 1.1 MI.
HAMLIN 14 MI.
NEWFUNDLAND JUNC. PA. 1911 5.6 MI.
PENNSYLVANIA
POCONO QUADRANGLE
2 680 000 FEET



Topography by Corps of Engineers, U.S. Army, Robert Muldrow, and G.S. Drunth. Control in part by Corps of Engineers, U.S. Army and Pennsylvania State Highway Department. Surveyed in 1918 and 1921.

ROAD CLASSIFICATION
Heavy-duty ——— Light-duty ———
Medium-duty ——— Unimproved dirt ———
U. S. Route ——— State Route ———

APPROXIMATE MEAN DECLINATION 1921



CONTOUR INTERVAL 20 FEET
DATUM IS MEAN SEA LEVEL

INTERIOR—GEOLOGICAL SURVEY, WASHINGTON, D. C.—1942
MR. 2438
Polyconic projection, 1927 North American datum
10 000-foot grid based on Pennsylvania (North)
rectangular coordinate system
1000-meter Universal Transverse Mercator grid ticks,
zone 18, shown in blue
SNYDERVILLE JUNC. U.S. 2091 3 MI.
EASTON 32 MI.
POCONO, PA.
N4100—W7515/15
1921

FOR SALE BY U.S. GEOLOGICAL SURVEY, WASHINGTON 25, D. C.
A FOLDER DESCRIBING TOPOGRAPHIC MAPS AND SYMBOLS IS AVAILABLE ON REQUEST

RETURN TO:
U.S. AND HISTORICAL MAP ARCHIVES