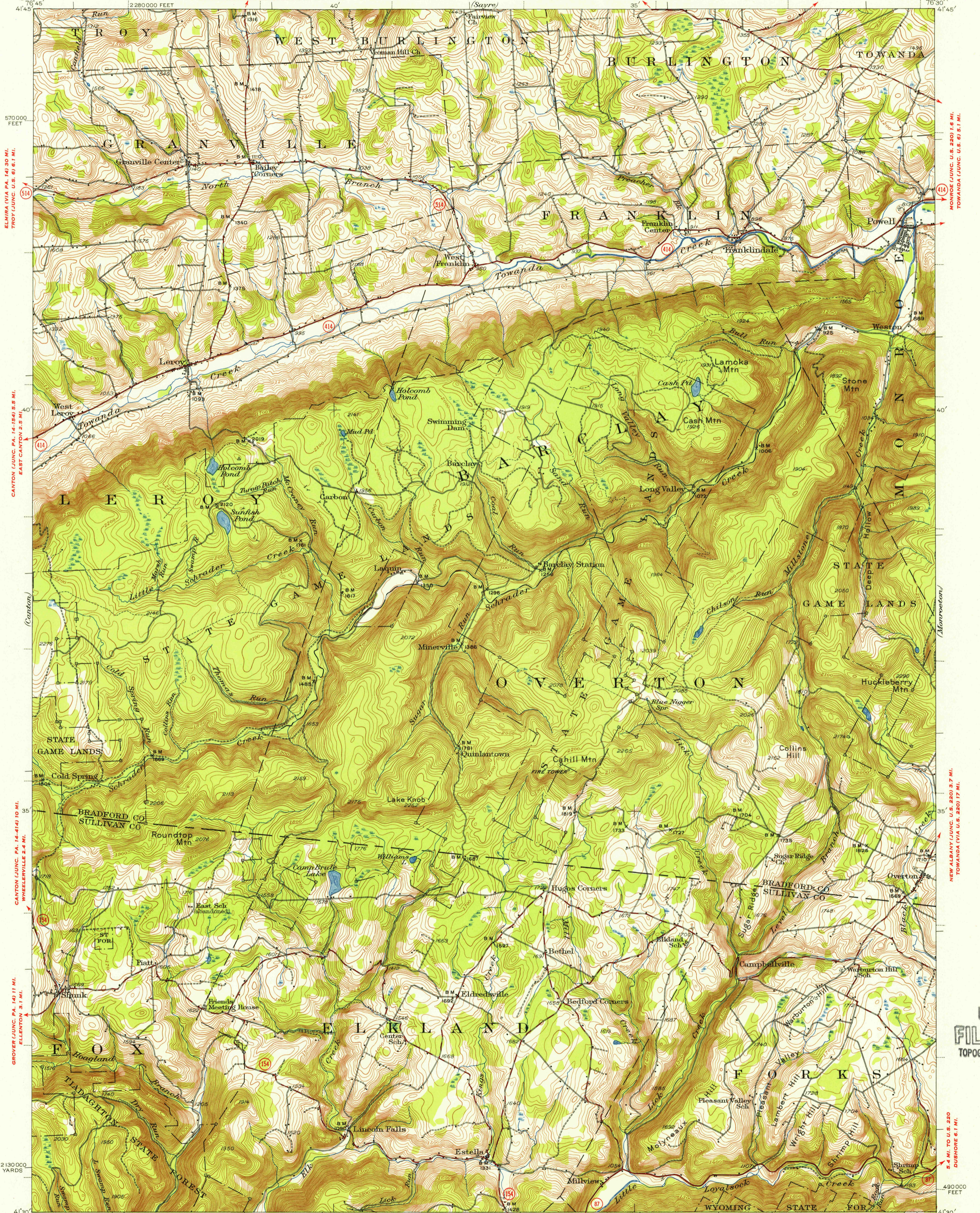


UNITED STATES
DEPARTMENT OF THE INTERIOR
GEOLOGICAL SURVEY

STATE OF PENNSYLVANIA
DEPARTMENT OF INTERNAL AFFAIRS
TOPOGRAPHIC AND GEOLOGIC SURVEY

U.S.G.S.
FILE COPY
TOPOGRAPHIC DIVISION

TOWANDA 5.4 MI.
OVERSHOT 1 MI.
PENNSYLVANIA
POWELL QUADRANGLE
15-MINUTE SERIES



ELMIRA (VIA PA. 141 30 MI.)
TROY (VIA U.S. 6) 6.1 MI.

CANTON (JUNC. PA. 14-194) 5.5 MI.
EAST CANTON 2.5 MI.

CANTON (JUNC. PA. 14-414) 10 MI.
WHEELERSVILLE 2.4 MI.

GROVER (JUNC. PA. 14-111) 11 MI.
ELLENTON 3.1 MI.

2130000 YARDS

Topography by G.J. Baker, H.F. Ewing,
Charles Mager, Jr. and C.H. Parker
Surveyed in 1942-1943

SCALE 1:62500
0 3000 6000 9000 12000 15000 18000 21000 FEET
0 1 2 3 4 5 KILOMETERS

CONTOUR INTERVAL 20 FEET
DATUM IS MEAN SEA LEVEL

ROAD CLASSIFICATION
Heavy-duty ——— 4 LANE 6 LANE Light-duty ———
Medium-duty - - - 4 LANE 6 LANE Unimproved dirt - - -
U.S. Route State Route

POWELL, PA.
N4130-W7630/15

FOR SALE BY U.S. GEOLOGICAL SURVEY, WASHINGTON 25, D. C.
A FOLDER DESCRIBING TOPOGRAPHIC MAPS AND SYMBOLS IS AVAILABLE ON REQUEST

USGS
HISTORICAL FILE
TOPOGRAPHIC DIVISION

1943
MAR 22 1955

4260