

U. S. G. S.
FILE COPY
Inspection and Editing.

31693 / 10/16

UNITED STATES
DEPARTMENT OF THE INTERIOR
GEOLOGICAL SURVEY
BURLINGTON (VIA U. S. NO. 220) 8.3 MI.
WEST BURLINGTON (JUNC. U. S. NO. 6) 1.5 MI.

STATE OF PENNSYLVANIA
DEPARTMENT OF INTERNAL AFFAIRS
WILLIAM S. LIVENGOOD, JR., SECRETARY
TOPOGRAPHIC AND GEOLOGIC SURVEY
GEORGE H. HASLEY, STATE GEOLOGIST

EAST SMITHFIELD 9.1 MI.
BURLINGTON 2.6 MI.

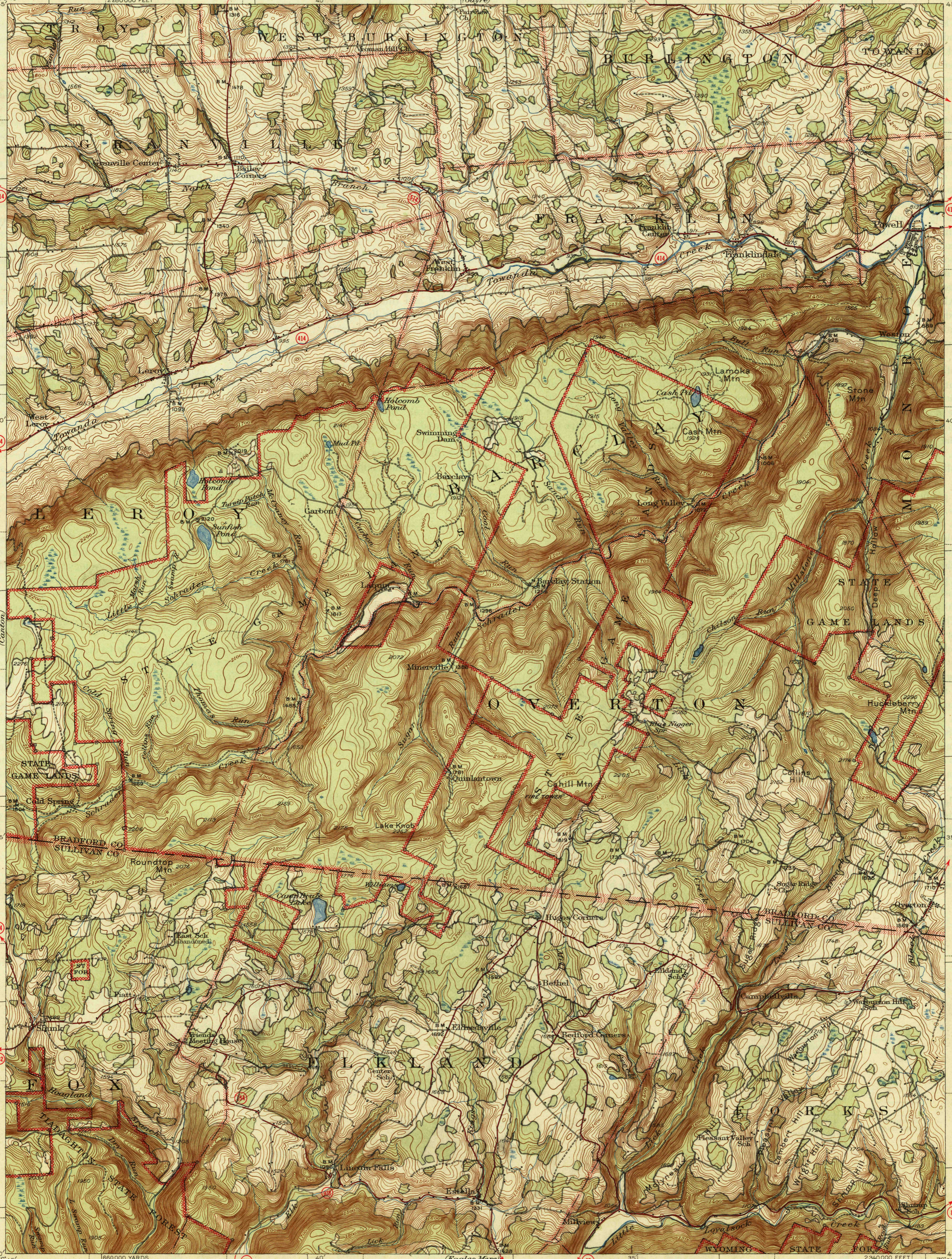
TOWANDA 5.4 MI.
OVERSHOT 1 MI.
PENNSYLVANIA
POWELL QUADRANGLE
15-MINUTE SERIES

(Towanda)
MONROTON (JUNC. U. S. NO. 220) 1.6 MI.
TOWANDA (JUNC. U. S. NO. 6) 5.1 MI.

NEW ALBANY (VIA U. S. NO. 220) 3.7 MI.
TOWANDA (VIA U. S. NO. 220) 16.7 MI.

JUNC. U. S. NO. 220 5.4 MI.
DUSHORE (JUNC. U. S. NO. 220-STATE NOS. 67-687) 6.1 MI.

(Laporte)



ELMIRA 30.5 MI.
TROY (JUNC. U. S. NO. 6) 6.1 MI.

CANTON (JUNC. STATE NOS. 14-154) 2.5 MI.
EAST CANTON 2.5 MI.

CANTON (JUNC. STATE NOS. 14-154) 10 MI.
WHEELERVILLE 2.4 MI.

GROVER (JUNC. STATE NO. 14) 11 MI.
ELLENTON 2.1 MI.

2130000 YARDS

Topography by G.J. Baker, H.F. Ewing,
Charles Mager, Jr. and C.H. Parker
Surveyed in 1942-1943

JUNC. STATE NO. 67 3.2 MI.

Scale 62500
1 2 3 4 5 Miles
1000 2000 3000 4000 5000 6000 7000 Yards
1000 2000 3000 4000 5000 6000 7000 Feet
1 2 3 4 5 Kilometers

USGS
Historical File
Topographic Division

ROUTES USUALLY TRAVELED
HARD IMPROVED SURFACES
OTHER SURFACE IMPROVEMENTS
U. S. ROUTE 1944 STATE ROUTE

Polyconic projection. 1927 North American datum
5000 yard grid based on U.S. zone system, A
10000 foot grid based on Pennsylvania (North)
rectangular coordinate system

POWELL, PA.
Edition of 1945
N4130-W7630/15

U. S. G. S.
FILE COPY
Inspection and Editing.

4315 MA