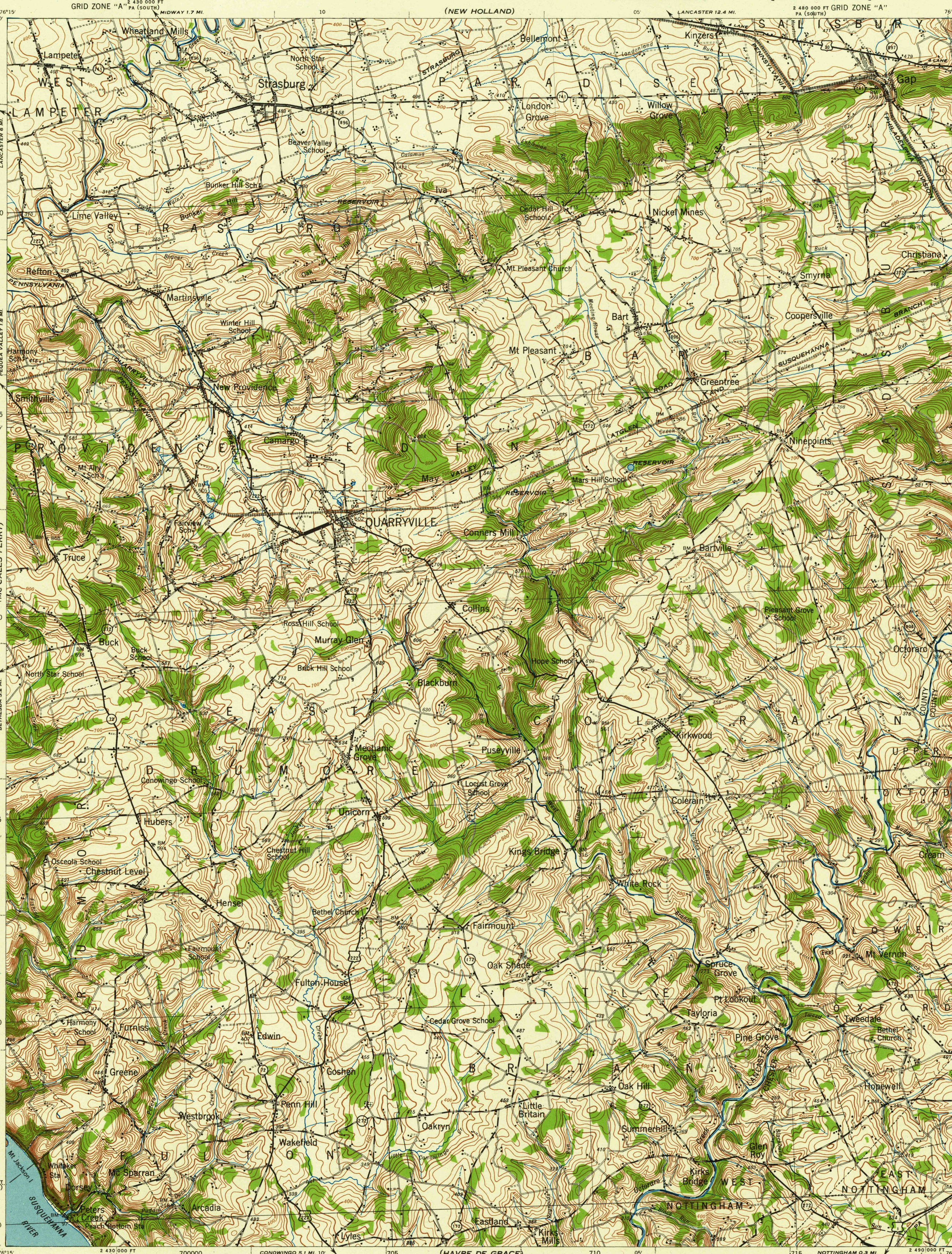


PENNSYLVANIA
QUARRYVILLE QUADRANGLE

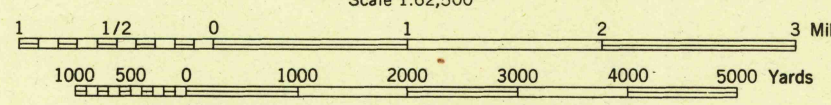
WAR DEPARTMENT
CORPS OF ENGINEERS, U. S. ARMY

PENNSYLVANIA
QUARRYVILLE QUADRANGLE



First Edition 1943.
Prepared under the direction of the Chief of Engineers, U. S. Army, 1942.
Work Projects Administration, O. P. 52-23-803, Philadelphia, Pa.
Surveyed by U. S. Geological Survey, 1913.
Photometric revision from aerial photos, A. A. A. Dept. of Agriculture, 1940.
Polyconic Projection, North American Datum.

ROAD CLASSIFICATION 1943
Main Highways: ————
Graded earth, gravel and stone: ————
U. S. Route: ————
Brick, concrete, macadam and other hard surfaces: ————
Dirt Road: ————
State Route: ————
More than two lanes indicated by note along road with tick at point of change.



CONTOUR INTERVAL 20 FEET—DATUM IS MEAN SEA LEVEL
NOTE: OFFICERS USING THIS MAP WILL MARK HEREON CORRECTIONS AND ADDITIONS WHICH COME TO THEIR ATTENTION AND WILL DIRECT TO THE CHIEF OF ENGINEERS, WASHINGTON, D. C.
PENNSYLVANIA STATE GRID ZONE SOUTH, IS INDICATED BY DOTTED TICKS OUTSIDE THE NEAT LINE AT 10,000 FT. INTERVALS.

QUARRYVILLE, PA.
N3945-W7600/15

APPROX. MEAN DECLINATION 1941
NO ANNUAL MAGNETIC CHANGE
Do not use diagrams except to obtain numerical values of angles.