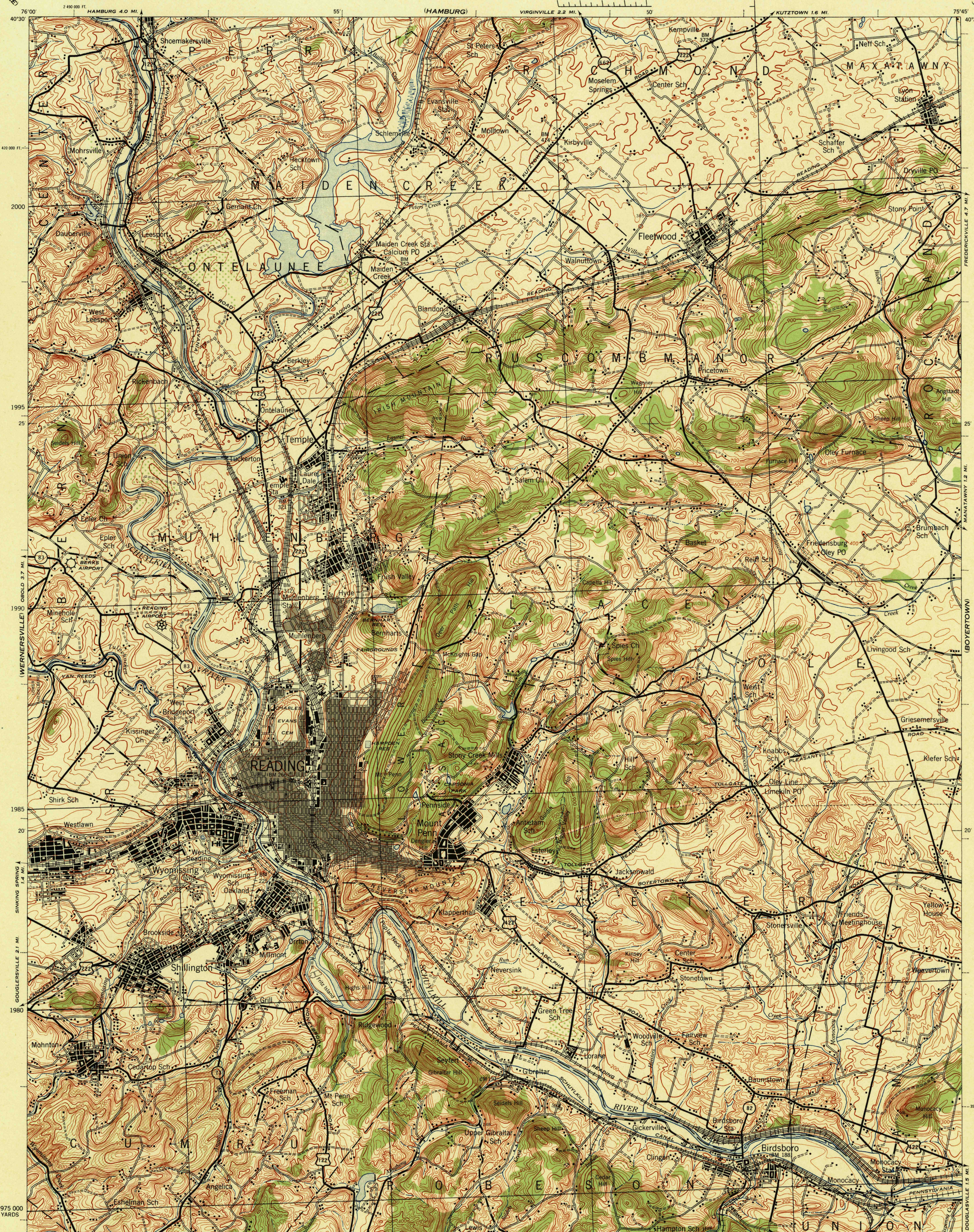


PENNSYLVANIA 1:62,500

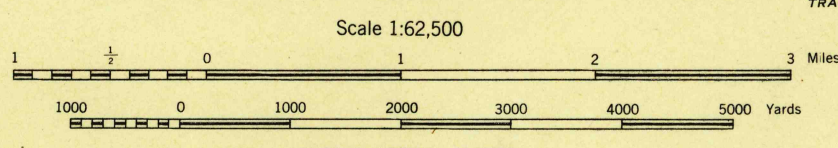
WAR DEPARTMENT
CORPS OF ENGINEERS, U. S. ARMY

FIRST EDITION-AMS 1

READING QUADRANGLE
15 MINUTE SERIES



First Edition (AMS 1), 1944.
Prepared under the direction of the Chief of Engineers, by the Army Map Service (SU), U.S. Army, Washington, D.C., 1944.
Control by U.S. Coast and Geodetic Survey.
Planimetry compiled by photo-planimetric methods from controlled mosaic, Army Map Service, from A.A. Department of Agriculture, 1937, 1940.
Relief compiled from U.S.G.S. Reading Quadrangle, 1:62,500, 1915, surveyed 1913.
Polyconic Projection, North American Datum.



ROAD CLASSIFICATION 1943
Dependable hard surface, heavy duty road. U.S. Route 160
Dependable hard surface, all-weather road. U.S. Route 30
Loose surface graded, dry weather road.
Secondary, hard surface, all-weather road.
Dirt road.
State Route
More than two lanes indicated by note along road with tick at point of change.
PLANE 1 & 4 LANE

CONTOUR INTERVAL 20 FEET
DATUM IS MEAN SEA LEVEL
FIVE THOUSAND YARD GRID COMPUTED FROM GRID SYSTEM FOR PROGRESSIVE MAPS IN THE U.S. ZONE A U.S.C. & G.S. SPECIAL PUBLICATION NO. 59
THE LAST THREE DIGITS OF THE GRID NUMBERS ARE OMITTED
PENNSYLVANIA STATE GRID ZONE NORTH, IS INDICATED BY DOTTED TICKS OUTSIDE THE NEAT LINE AT 10,000 FOOT INTERVALS
NOTE: OFFICERS USING THIS MAP WILL MARK HEREON CORRECTIONS AND ADDITIONS WHICH COME TO THEIR ATTENTION AND WILL DIRECT TO THE CHIEF OF ENGINEERS, WASHINGTON, D.C.

APPROXIMATE MEAN DECLINATION 1944 FOR CENTER OF SHEET
NO ANNUAL MAGNETIC CHANGE
Use diagram only to obtain numerical values.
To determine magnetic north line, connect the point "P" on the south edge of the map with the value of the angle between GRID NORTH and MAGNETIC NORTH, as plotted on the degree scale of the north edge of the map.
LEGEND
LOGGED OFF
BRUSH
ARMY MAP SERVICE, U.S. ARMY, WASHINGTON, D.C. 10876
1/45 SX
1944

READING, PA.
N4015-W7545/15