

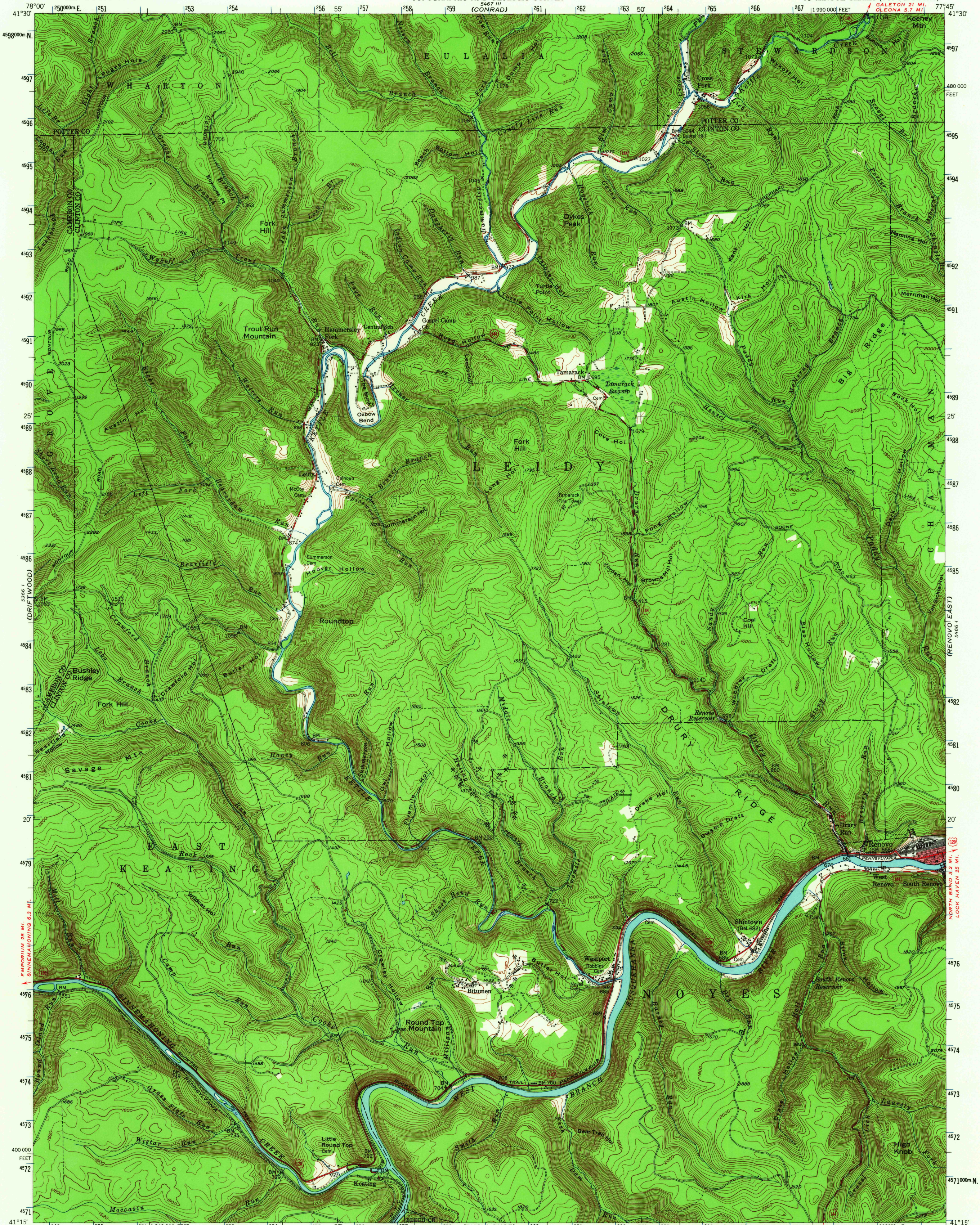
SEPT II (EMPORIUM)

UNITED STATES DEPARTMENT OF THE INTERIOR GEOLOGICAL SURVEY

STATE OF PENNSYLVANIA DEPARTMENT OF INTERNAL AFFAIRS TOPOGRAPHIC AND GEOLOGIC SURVEY

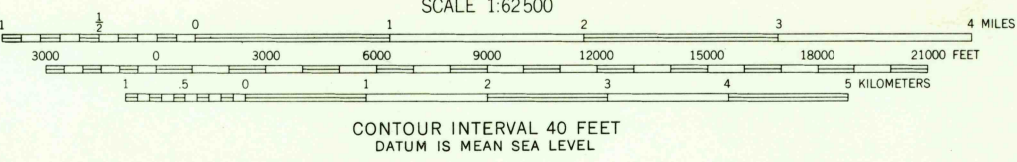
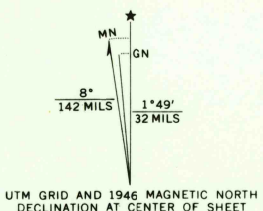
RENOVO WEST QUADRANGLE PENNSYLVANIA 15 MINUTE SERIES (TOPOGRAPHIC)

SEPT II (GALETON)



(KARTHAUS) 5466 II

Mapped, edited, and published by the Geological Survey Control by USGS and USCG&S Topography from aerial photographs by multiplex methods Aerial photographs taken 1944. Field check 1946 Polyconic projection. 1927 North American datum 10,000-foot grid based on Pennsylvania coordinate system, north zone Red tint indicates area in which only landmark buildings are shown 1000-meter Universal Transverse Mercator grid ticks, zone 18, shown in blue



THIS MAP COMPLIES WITH NATIONAL MAP ACCURACY STANDARDS FOR SALE BY U.S. GEOLOGICAL SURVEY, WASHINGTON, D. C. 20242 A FOLDER DESCRIBING TOPOGRAPHIC MAPS AND SYMBOLS IS AVAILABLE ON REQUEST THIS MAP IS AVAILABLE WITH OR WITHOUT SHADED RELIEF OVERPRINT

USGS HISTORICAL FILE TOPOGRAPHIC DIVISION



ROAD CLASSIFICATION Heavy-duty Light-duty Medium-duty Unimproved dirt U.S. Route State Route

U.S.G.S. FILE COPY TOPOGRAPHIC DIVISION RENOVO WEST, PA. 1946 AMS 5466 IV—SERIES V731

SEP 14 1965 16,520