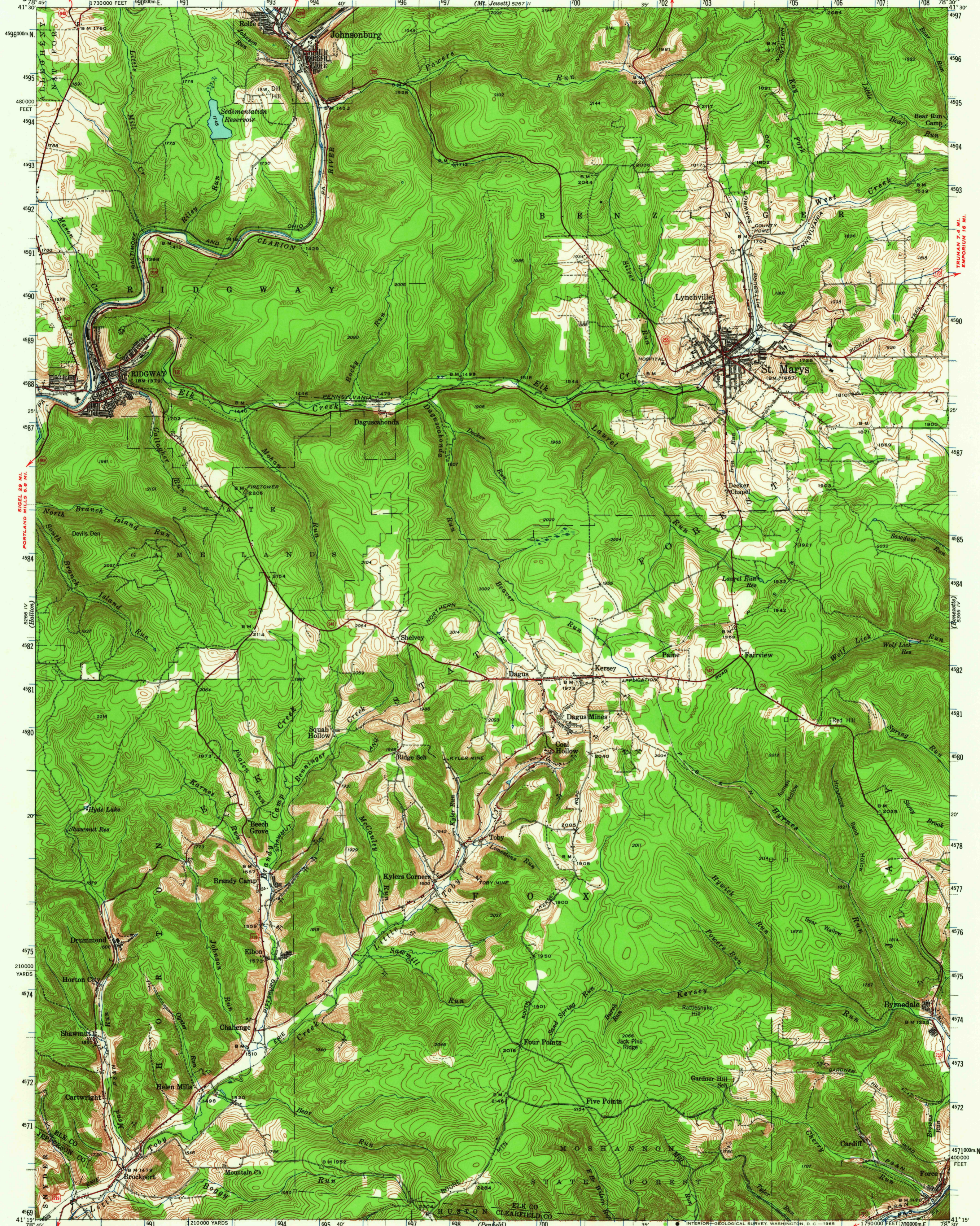


SHEFFIELD (JUNC. U.S. 6) 22 MI.
HIGHLAND CORNERS 7.5 MI.

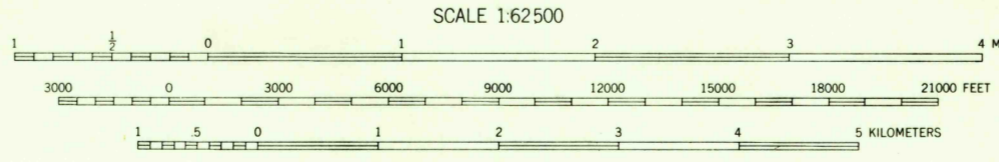
UNITED STATES
DEPARTMENT OF THE INTERIOR
GEOLOGICAL SURVEY

STATE OF PENNSYLVANIA
REPRESENTED BY THE
DEPARTMENT OF INTERNAL AFFAIRS
TOPOGRAPHIC AND GEOLOGIC SURVEY
(Mt. Jewett) 5267 II

PENNSYLVANIA
RIDGWAY QUADRANGLE
15-MINUTE SERIES



Topography by E. V. Holloway, F. H. Sargent, E. M. Thompson,
C. R. Atkins, C. A. Killian, and W. A. Fisher
Surveyed in 1940-1941



Contour interval 20 feet
Datum is mean sea level

ROAD CLASSIFICATION
Heavy-duty ——— 4 LANE 16 LANE Light-duty ———
Medium-duty - - - 4 LANE 16 LANE Unimproved dirt - - - - -
U. S. Route State Route

Penfield 4.2 MI.
DU BOIS 17 MI.

Polyconic projection. 1927 North American datum
5000 yard grid based on U. S. zone system, B
10000 foot grid based on Pennsylvania (North)
rectangular coordinate system

To join Penfield map
use dotted projection corners

1000-meter Universal Transverse Mercator grid-ticks,
zone 17, shown in blue

RIDGWAY, PA.

N4115-W7830/15

1941

AMS 5266 I-SERIES V731

FOR SALE BY U. S. GEOLOGICAL SURVEY, WASHINGTON, D. C. 20242
A FOLDER DESCRIBING TOPOGRAPHIC MAPS AND SYMBOLS IS AVAILABLE ON REQUEST

