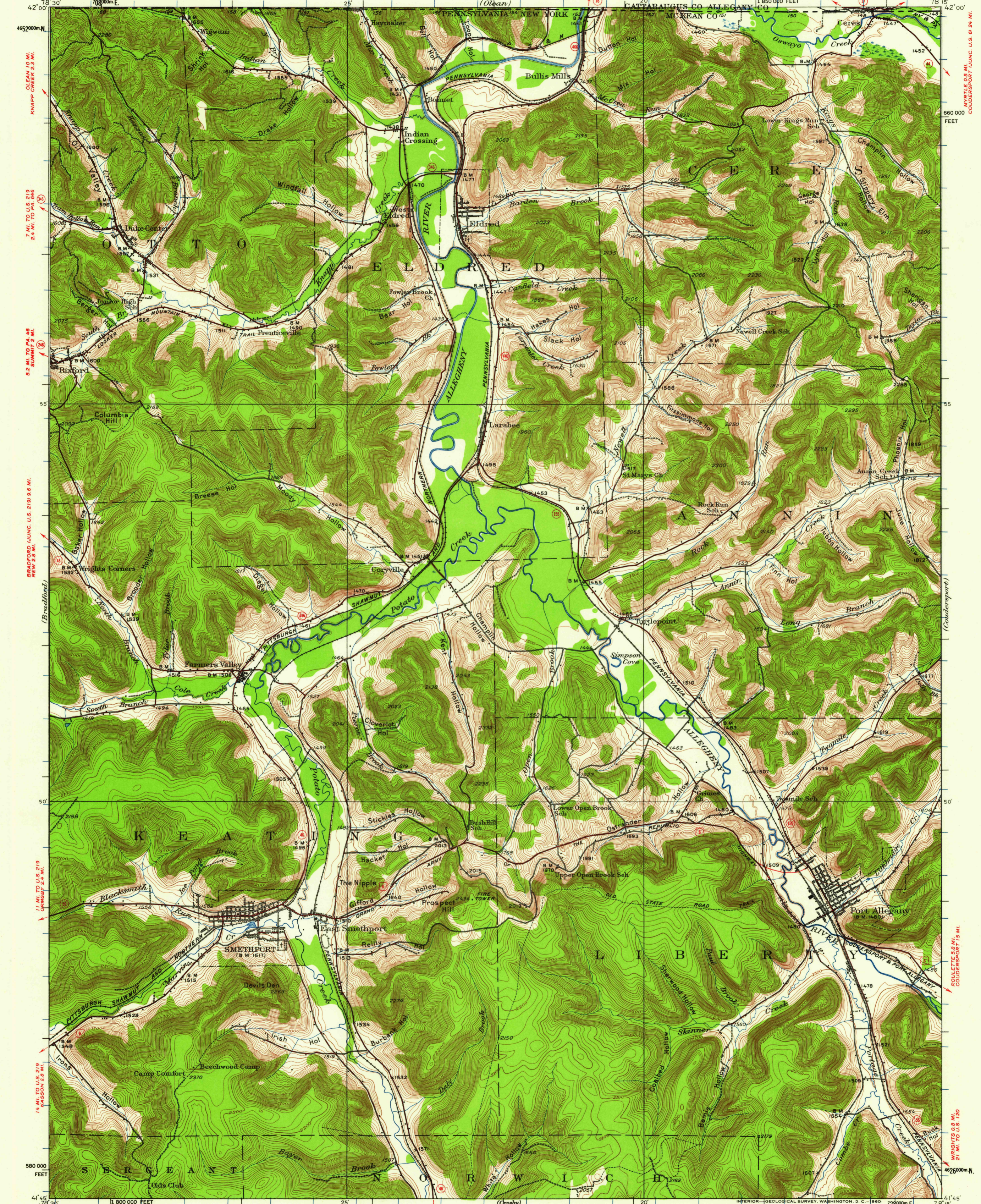


UNITED STATES
DEPARTMENT OF THE INTERIOR
GEOLOGICAL SURVEY

STATE OF PENNSYLVANIA
REPRESENTED BY THE
DEPARTMENT OF INTERNAL AFFAIRS
TOPOGRAPHIC AND GEOLOGIC SURVEY

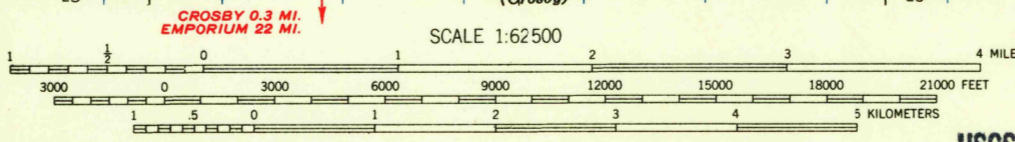
OLEAN 11 MI.
PORTVILLE 5.5 MI.
WELLSVILLE 21 MI.
BOLIVAR 7 MI.
PENNSYLVANIA-NEW YORK
SMETHPORT QUADRANGLE



Topography by J.I. Gayetty, W.C. Thompson, W.B. Brewer, and F.H. Sargent
Surveyed in 1932-1933

ROAD CLASSIFICATION

Heavy-duty	Light-duty
Medium-duty	Unimproved dirt
U.S. Route	State Route



CONTOUR INTERVAL 20 FEET
DATUM IS MEAN SEA LEVEL

Polyconic projection. 1927 North American datum
10,000-foot grid based on Pennsylvania (North)
rectangular coordinate system
1000-meter Universal Transverse Mercator grid ticks,
zone 17, shown in blue

USGS
HISTORICAL FILE
TOPOGRAPHIC DIVISION
FILE COPY

SMETHPORT, PA.—N. Y.
N 4145—W 7815/15
1933

FOR SALE BY U.S. GEOLOGICAL SURVEY, WASHINGTON 25, D. C.
A FOLDER DESCRIBING TOPOGRAPHIC MAPS AND SYMBOLS IS AVAILABLE ON REQUEST

FEB - 4 1960