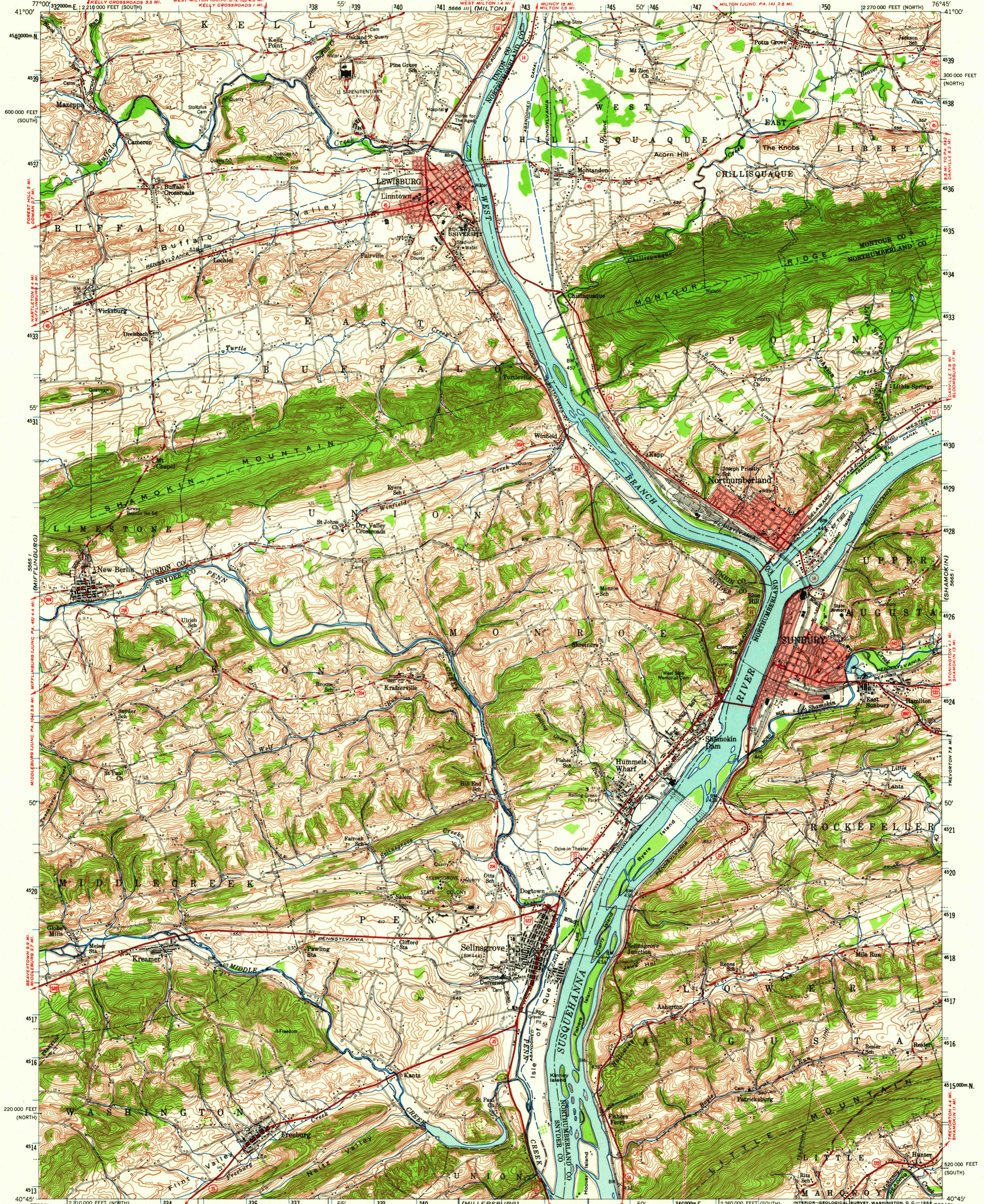


UNITED STATES
DEPARTMENT OF THE INTERIOR
GEOLOGICAL SURVEY

UNITED STATES
DEPARTMENT OF THE ARMY
CORPS OF ENGINEERS

SUNBURY QUADRANGLE
PENNSYLVANIA
15 MINUTE SERIES (TOPOGRAPHIC)



Map by the Army Map Service
Edited and published by the Geological Survey

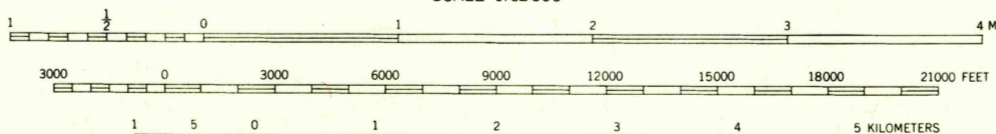
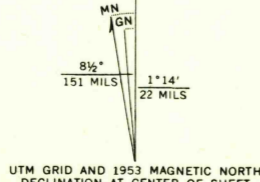
Control by USGS and USC&GS

Topography from aerial photographs by stereophotogrammetric methods. Aerial photographs taken 1943. Field check 1943. Culture revised by the Geological Survey 1953.

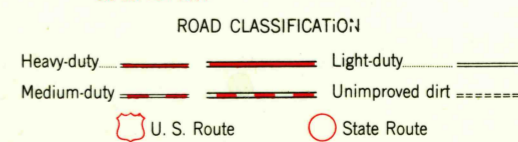
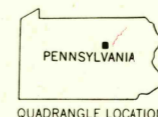
Polyconic projection. 1927 North American datum. 10,000-foot grids based on Pennsylvania coordinate system, north and south zones. 1000-meter Universal Transverse Mercator grid ticks, zone 18, shown in blue.

Red tint indicates areas in which only landmark buildings are shown.

Unchecked elevations are shown in brown.



CONTOUR INTERVAL 20 FEET
DATUM IS MEAN SEA LEVEL



SUNBURY, PA.
N4045-W7645/15

1953

AMS 5665 IV-SERIES V731

FOR SALE BY U. S. GEOLOGICAL SURVEY, WASHINGTON 25, D. C.
A FOLDER DESCRIBING TOPOGRAPHIC MAPS AND SYMBOLS IS AVAILABLE ON REQUEST