

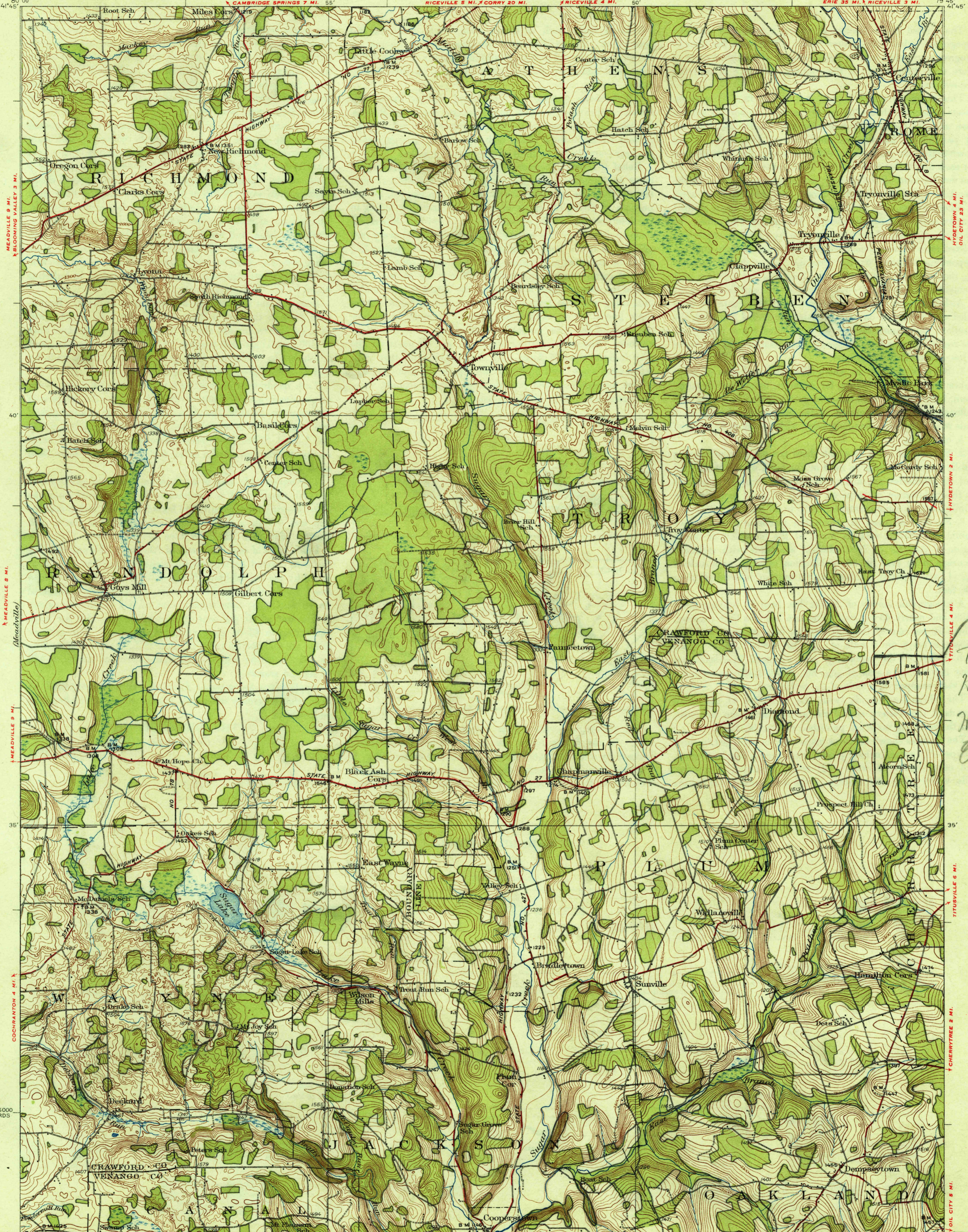
Cambridge Springs

DEPARTMENT OF THE INTERIOR  
U.S. GEOLOGICAL SURVEY

STATE OF PENNSYLVANIA  
DEPARTMENT OF INTERNAL AFFAIRS  
JAMES F. WOODWARD, SECRETARY  
TOPOGRAPHIC AND GEOLOGIC SURVEY  
GEORGE H. ASHLEY, STATE GEOLOGIST

U. S. G. S.  
FILE COPY  
Inspection and Editing.

PENNSYLVANIA  
TOWNVILLE QUADRANGLE  
ERIE 35 MI. RICEVILLE 3 MI.



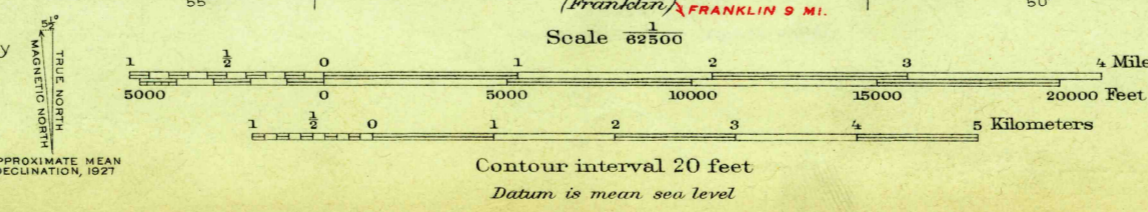
15 Miles  
14  
13  
12  
11  
10  
9  
8  
7  
6  
5  
4  
3  
2  
1  
0  
1  
2  
3  
4  
5  
6  
7  
8  
9  
10  
11  
12  
13  
14  
15 Miles

*Perm. Hydro. H.G. Van Riper Hy. planning Eng.*

U. S. G. S.  
FILE COPY  
Inspection and Editing.

2125000 YARDS  
1095000 YARDS

Topography by J.F. McBeth, J.H. Wilke, and J.C. Beam  
Control by U.S. Geological Survey, and Pennsylvania State Highway Department, and Pennsylvania Railroad  
Surveyed in 1926-1927



USGS  
HISTORICAL FILE  
TOPOGRAPHIC DIVISION  
FRANKLIN 7 MI.  
Polyconic projection, North American datum  
5000 yard grid based upon U. S. zone system, B  
HARD IMPERVIOUSLY SURFACED ROADS  
OTHER MAIN TRAVELED ROADS

MAR 30 1932 (3525)

TOWNVILLE, PA.  
Edition of 1932  
2655-0600-49

1525