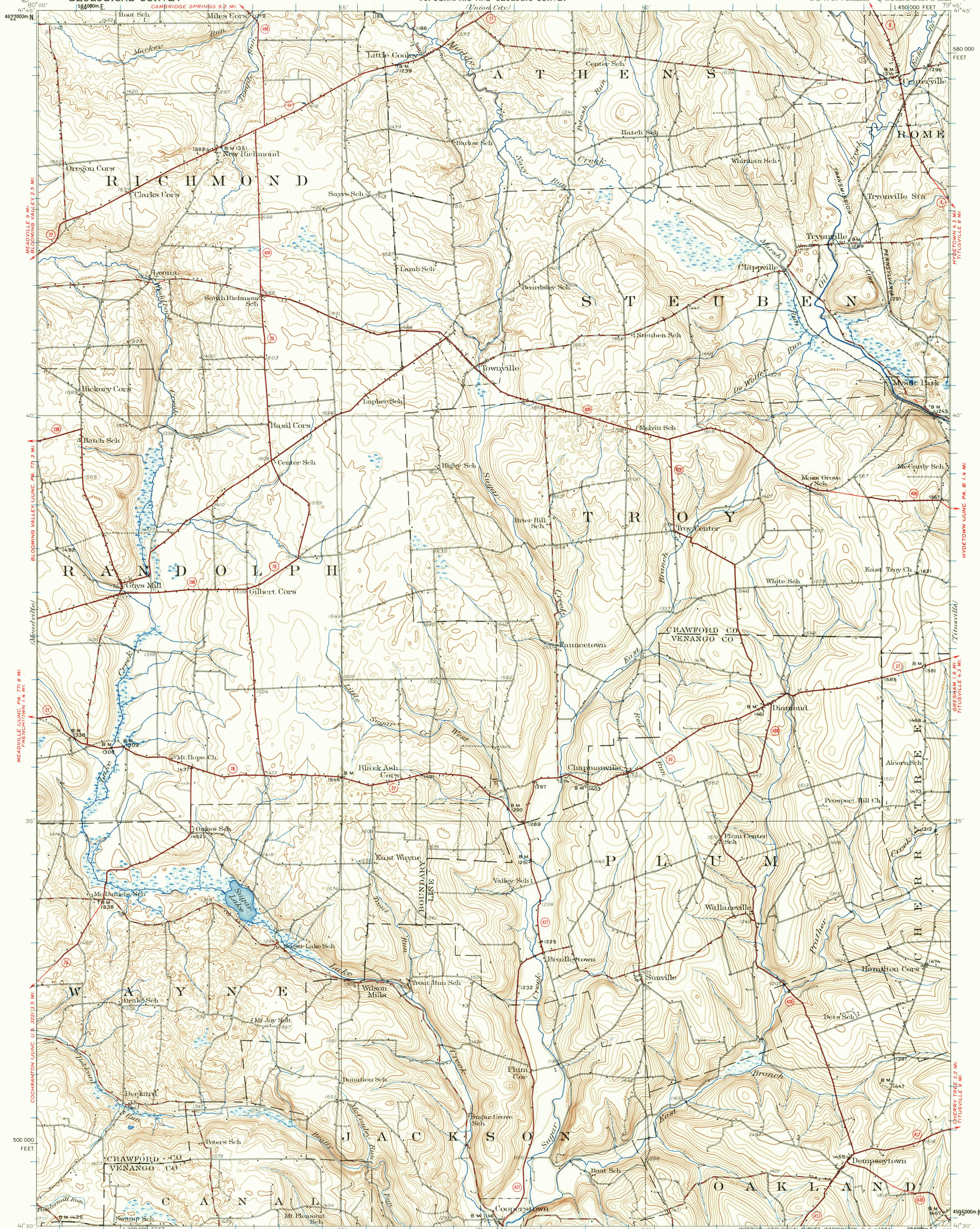


UNITED STATES  
DEPARTMENT OF THE INTERIOR  
GEOLOGICAL SURVEY

STATE OF PENNSYLVANIA  
REPRESENTED BY THE  
DEPARTMENT OF INTERNAL AFFAIRS  
TOPOGRAPHIC AND GEOLOGIC SURVEY

UNION CITY QUANG. U.S. 61 11 MI.  
2.5 MI. TO PA. 77

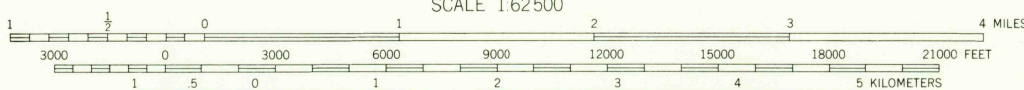
PENNSYLVANIA  
TOWNVILLE QUADRANGLE



Topography by J.F. McBeth, J.H. Wilke, and J.C. Beam  
Surveyed in 1926-1927

ROAD CLASSIFICATION

Heavy-duty	1964
Medium-duty	Unimproved dirt
Light-duty	
State Route	



CONTOUR INTERVAL 20 FEET  
DATUM IS MEAN SEA LEVEL

INTERIOR—GEOLOGICAL SURVEY, WASHINGTON, D. C.—1964  
GALLOWAY 5.4 MI.  
FRANKLIN 7.5 MI.

Polyconic projection. 1927 North American datum  
10,000-foot grid based on Pennsylvania (North)  
rectangular coordinate system  
1000-meter Universal Transverse Mercator grid ticks,  
zone 17, shown in blue

TOWNVILLE, PA.  
N4130—W7945/15

1927

FOR SALE BY U. S. GEOLOGICAL SURVEY, WASHINGTON 25, D. C.  
A FOLDER DESCRIBING TOPOGRAPHIC MAPS AND SYMBOLS IS AVAILABLE ON REQUEST