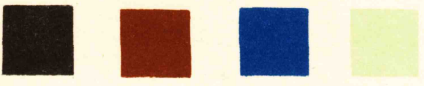


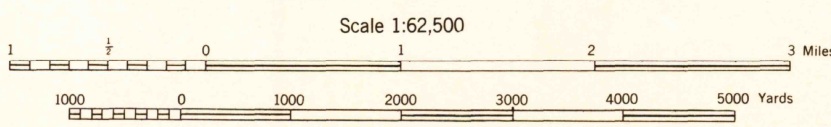
PENNSYLVANIA 1:62,500



14° 13° 12° 11° 10° 9°

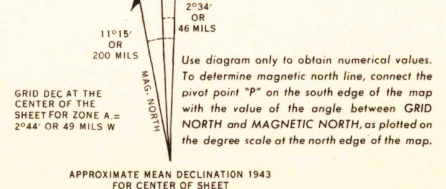


First Edition 1944.
Prepared under the direction of the Chief of Engineers, U. S. Army,
By Army Map Service (SX), U. S. Army, Washington, D. C., 1944.
Compiled from U. S. G. S. Quadrangles, 1921 and Photo Indexes.
Control by U. S. C. & G. S., and U. S. G. S.
Aerial Photographs for A. A. A. by Wallace Aerial Surveys, Spokane, Wash., Oct. 1938.
This map is issued without final edit pending publication of new map.
Polyconic Projection, North American Datum 1927.



CONTOUR INTERVAL 100 FEET
DATUM IS MEAN SEA LEVEL

FIVE THOUSAND YARD GRID COMPUTED FROM GRID SYSTEM FOR PROGRESSIVE MAPS
IN THE U. S. ZONE B U. S. C. & G. S. SPECIAL PUBLICATION NO. 59
THE LAST THREE DIGITS OF THE GRID NUMBERS ARE OMITTED
THE OVERLAPPING GRID BOUNDARIES ARE INDICATED BY SHORT BROKEN TICKS CROSSING THE NEAT LINE
PENNSYLVANIA STATE GRID ZONE PENNSYLVANIA NORTH IS INDICATED
BY DOTTED LINES ON THE NEAT LINE OF 18000 FOOT INTERVALS
NOTE: OFFICERS USING THIS MAP WILL MARK REVISION CORRECTIONS AND ADDITIONS WHICH COME
TO THEIR ATTENTION AND MAIL DIRECT TO THE CHIEF OF ENGINEERS, WASHINGTON, D. C.



TROUT RUN, PA.
N4115-W7700/15

ROAD CLASSIFICATION 1943

Dependable hard-surface, heavy-duty road.

Loose-surface graded, dry weather road.

Secondary hard-surface, all-weather road.

Dirt road.

U. S. Route

State Route

3 LANE, 14 LANE

More than two lanes indicated by note along road with tick at point of change.