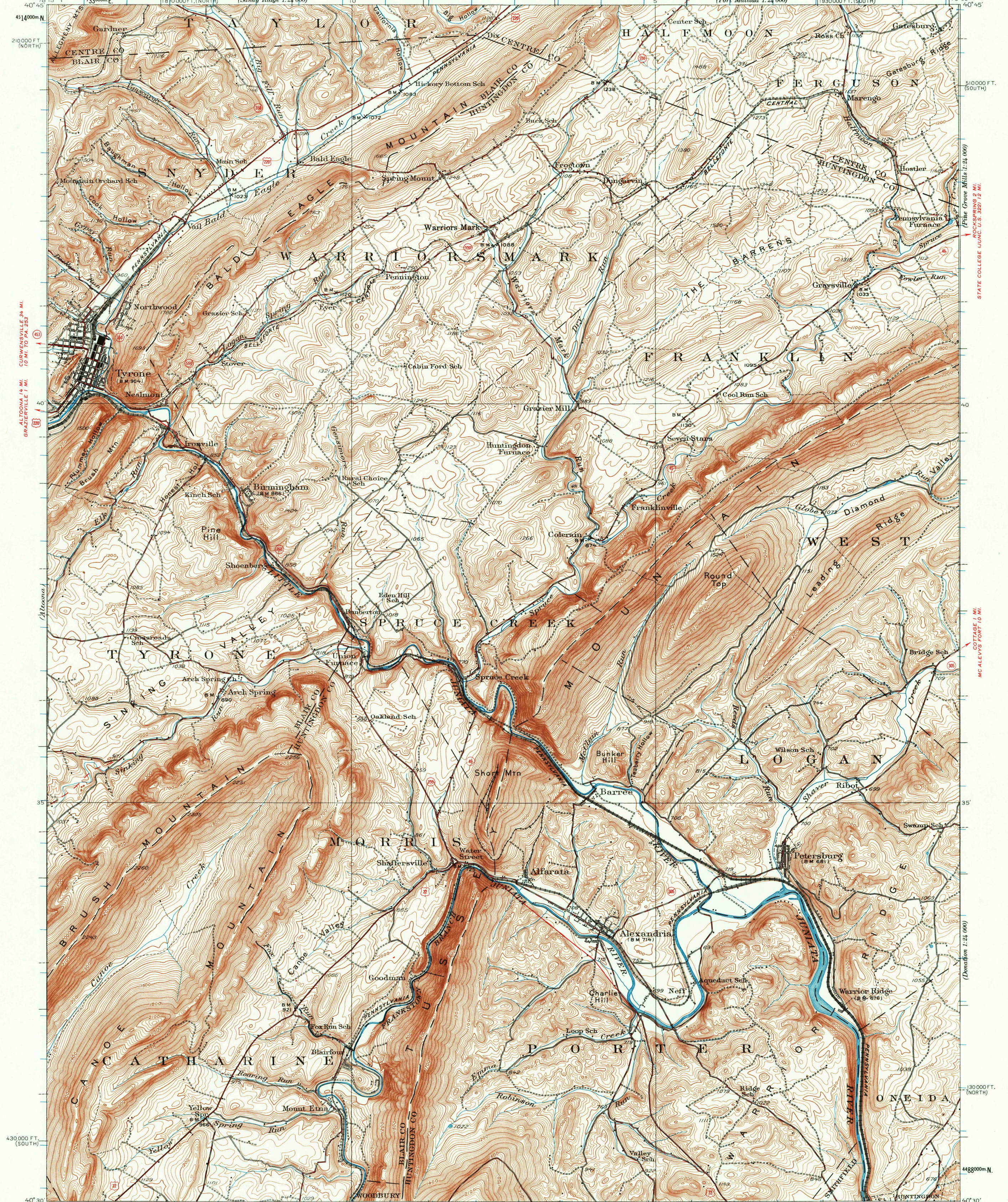


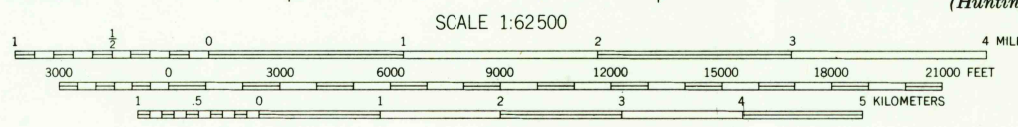
PHILIPSBURG (JUNC. U.S. 322) 12 MI.
SANDY RIDGE 5 MI.
UNITED STATES
DEPARTMENT OF THE INTERIOR
GEOLOGICAL SURVEY

STATE OF PENNSYLVANIA
DEPARTMENT OF INTERNAL AFFAIRS
TOPOGRAPHIC AND GEOLOGIC SURVEY

PENNSYLVANIA
TYRONE QUADRANGLE



Topography by R.L. Harrison and K.W. Trimble
Surveyed in 1921 and 1929
CANOE CREEK 3.5 MI.
HOLLIDAYSBURG 11 MI.
ROAD CLASSIFICATION
Heavy-duty ——— Light-duty ———
Medium-duty ——— Unimproved dirt ———
U.S. Route State Route



Interior Geological Survey, Washington, D.C. - 1973
(Huntingdon 1:24,000)
POLYCONIC PROJECTION. 1927 North American datum
10,000-foot grids based on Pennsylvania coordinate
system, south and north zones
1000-meter Universal Transverse Mercator grid ticks,
zone 17, shown in blue

TYRONE, PA.
N4030-W7800/15

1929

FOR SALE BY U.S. GEOLOGICAL SURVEY, WASHINGTON, D.C. 20242
A FOLDER DESCRIBING TOPOGRAPHIC MAPS AND SYMBOLS IS AVAILABLE ON REQUEST

9050

JUL 3 1973