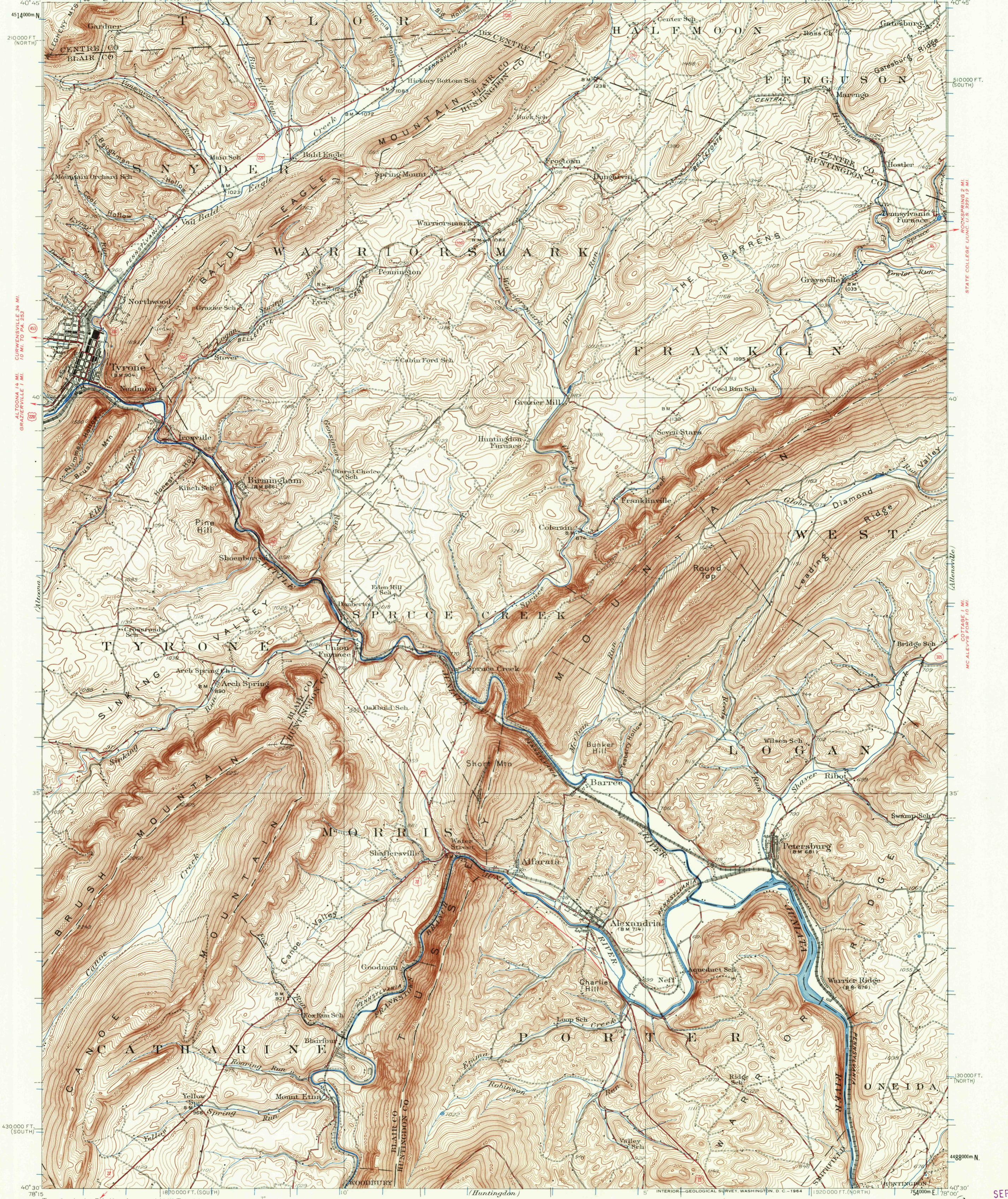


PHILIPSBURG (UNCL. U.S. 322) 12 MI.  
SANDY RIDGE 5 MI.  
UNITED STATES  
DEPARTMENT OF THE INTERIOR  
GEOLOGICAL SURVEY

STATE OF PENNSYLVANIA  
DEPARTMENT OF INTERNAL AFFAIRS  
TOPOGRAPHIC AND GEOLOGIC SURVEY  
(Phillipsburg)

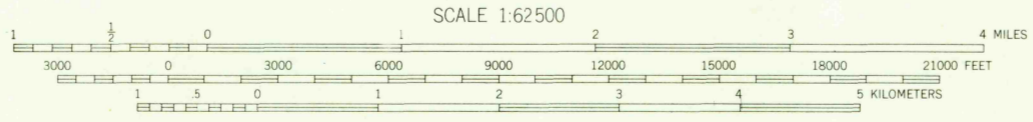
BELLEVILLE 20 MI.  
STORMSTOWN 4.5 MI.

PENNSYLVANIA  
TYRONE QUADRANGLE



Topography by R.L. Harrison and K.W. Trimble  
Surveyed in 1921 and 1929  
CANOE CREEK 3.5 MI.  
HOLLIDAYSBURG 11 MI.  
ROAD CLASSIFICATION

Heavy-duty ——— Light-duty ———  
Medium-duty ——— Unimproved dirt ———  
U.S. Route ○ State Route ○



CONTOUR INTERVAL 20 FEET  
DATUM IS MEAN SEA LEVEL

HUNTINGDON 3 MI.  
MT. UNION 17 MI.

Polyconic projection. 1927 North American datum  
10,000-foot grids based on Pennsylvania coordinate  
system, south and north zones  
1000-meter Universal Transverse Mercator grid ticks,  
zone 17, shown in blue

USGS  
HISTORICAL FILE  
TOPOGRAPHIC DIVISION  
COPY  
TOPOGRAPHIC DIVISION

TYRONE, PA.  
N4030-W7800/15

1929

FOR SALE BY U.S. GEOLOGICAL SURVEY, WASHINGTON 25 D. C.  
A FOLDER DESCRIBING TOPOGRAPHIC MAPS AND SYMBOLS IS AVAILABLE ON REQUEST

SEP 21 1964

8325