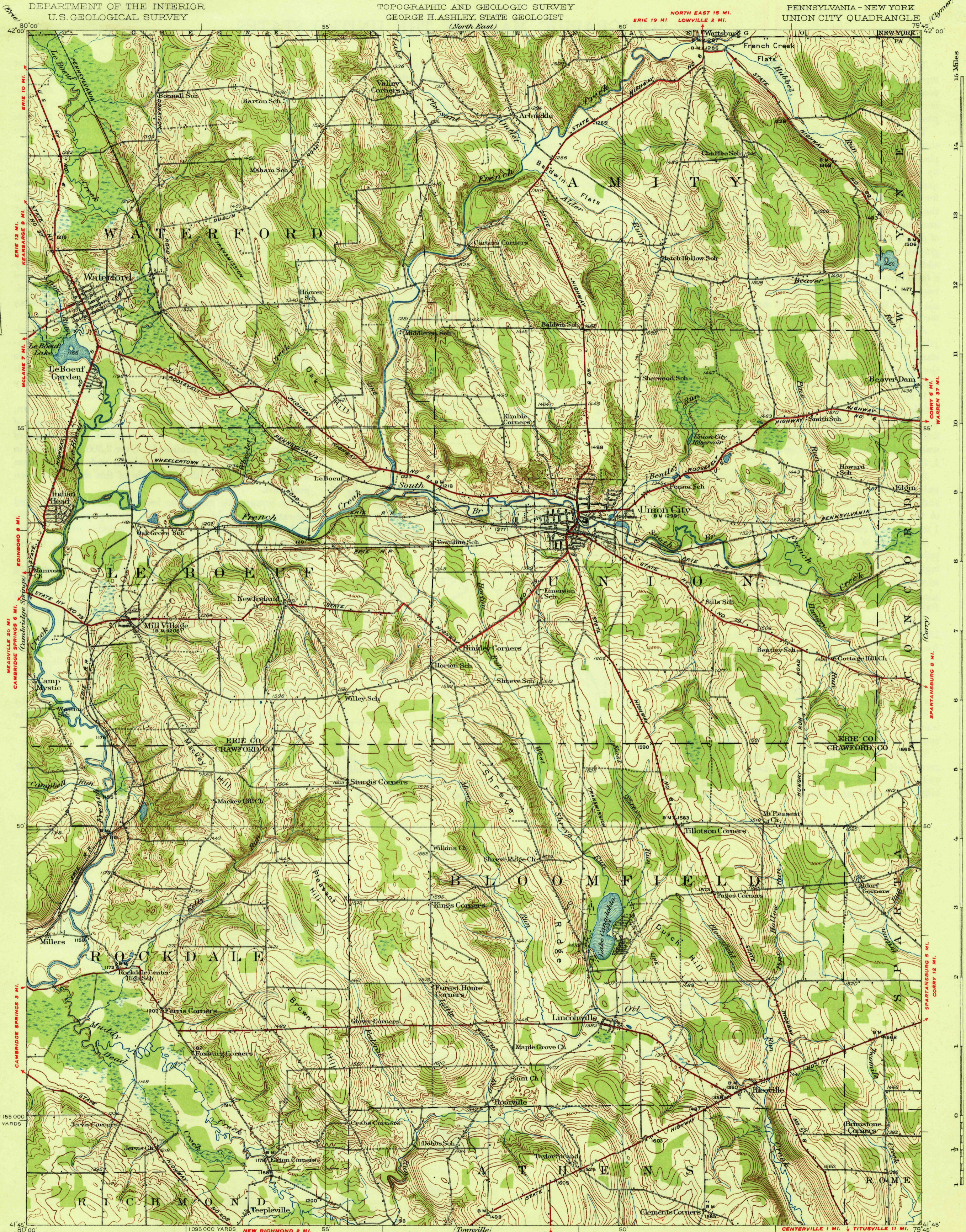


STATE OF PENNSYLVANIA
 DEPARTMENT OF INTERNAL AFFAIRS
 PHILIP H. DEWEY, SECRETARY
 TOPOGRAPHIC AND GEOLOGIC SURVEY
 GEORGE H. ASHLEY, STATE GEOLOGIST
 (North East)

DEPARTMENT OF THE INTERIOR
 U.S. GEOLOGICAL SURVEY

PENNSYLVANIA - NEW YORK
 UNION CITY QUADRANGLE

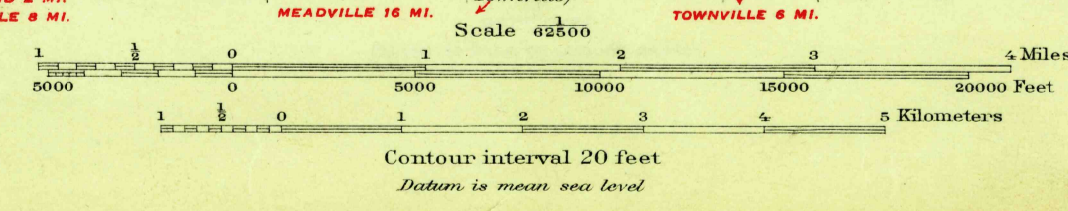
U. S. G. S.
 FILE COPY



1.5 Miles
 1.4
 1.3
 1.2
 1.1
 1.0
 9
 8
 7
 6
 5
 4
 3
 2
 1
 0
 1
 2
 3
 4
 5
 6
 7
 8
 9
 10
 11
 12
 13
 14
 15 Miles

Topography by C.W. Goodlove, J.K. Bailey, Paul Blake, W.A. Fisher, and L.A. McGann
 Control by U.S. Geological Survey and Pennsylvania State Highway Department
 Surveyed in 1929

APPROXIMATE MEAN DECLINATION, 1929



USGS
 HISTORICAL FILE
 TOPOGRAPHIC DIVISION

MAY 12 1932 (3630)
 UNION CITY, PA.-N.Y.
 Edition of 1932
 2655 : 0700 : 49:

USGS Library
 Reston, VA.
 Topo Archive

U. S. G. S.
 FILE COPY
 Inspection and Editing.

3630