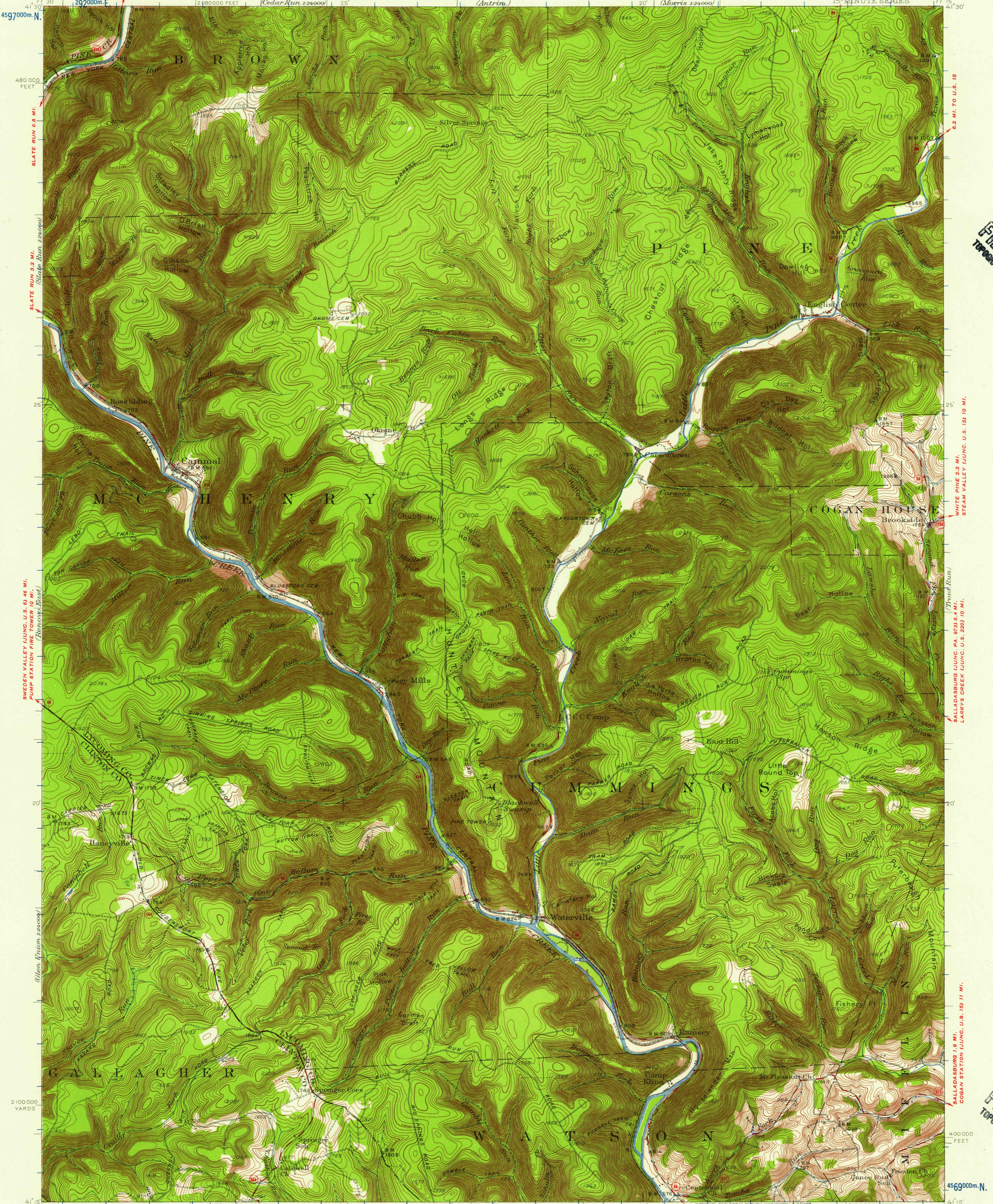


MORRIS 14 MI.
CEDAR RUN 2.5 MI.
UNITED STATES
DEPARTMENT OF THE INTERIOR
GEOLOGICAL SURVEY

STATE OF PENNSYLVANIA
DEPARTMENT OF INTERNAL AFFAIRS
TOPOGRAPHIC AND GEOLOGIC SURVEY

WELLSBORO (JUNC. U.S. 6.) 19 MI.
MORRIS 7.2 MI.
PENNSYLVANIA
WATERVILLE QUADRANGLE
15-MINUTE SERIES



U.S.G.S.
FILE COPY
TOPOGRAPHIC DIVISION

U.S.G.S.
FILE COPY
TOPOGRAPHIC DIVISION

Topography by W.C. Thompson, Benjamin Munroe, Jr.,
R.L. Marx, Morris Scheinman, J.A. Newman, and R.H. Yeaman
Surveyed in 1937
1000-meter Universal Transverse Mercator grid ticks,
zone 18, shown in blue

ROAD CLASSIFICATION
Medium-duty ——— Light-duty - - - - -
Unimproved dirt - - - - -
State Route ○

SWISSDALE 6.9 MI. (JUNC. U.S. 220) 10 MI.
SCALE 1:62500
4.7 MI. TO U.S. 220
JERSEY SHORE 5 MI.
CONTOUR INTERVAL 20 FEET
DATUM IS MEAN SEA LEVEL

USGS
HISTORICAL FILE
TOPOGRAPHIC DIVISION
WATERVILLE, PA.
N4115-W7715/15
1937

FOR SALE BY U.S. GEOLOGICAL SURVEY, WASHINGTON 25, D. C.
A FOLDER DESCRIBING TOPOGRAPHIC MAPS AND SYMBOLS IS AVAILABLE ON REQUEST

3720