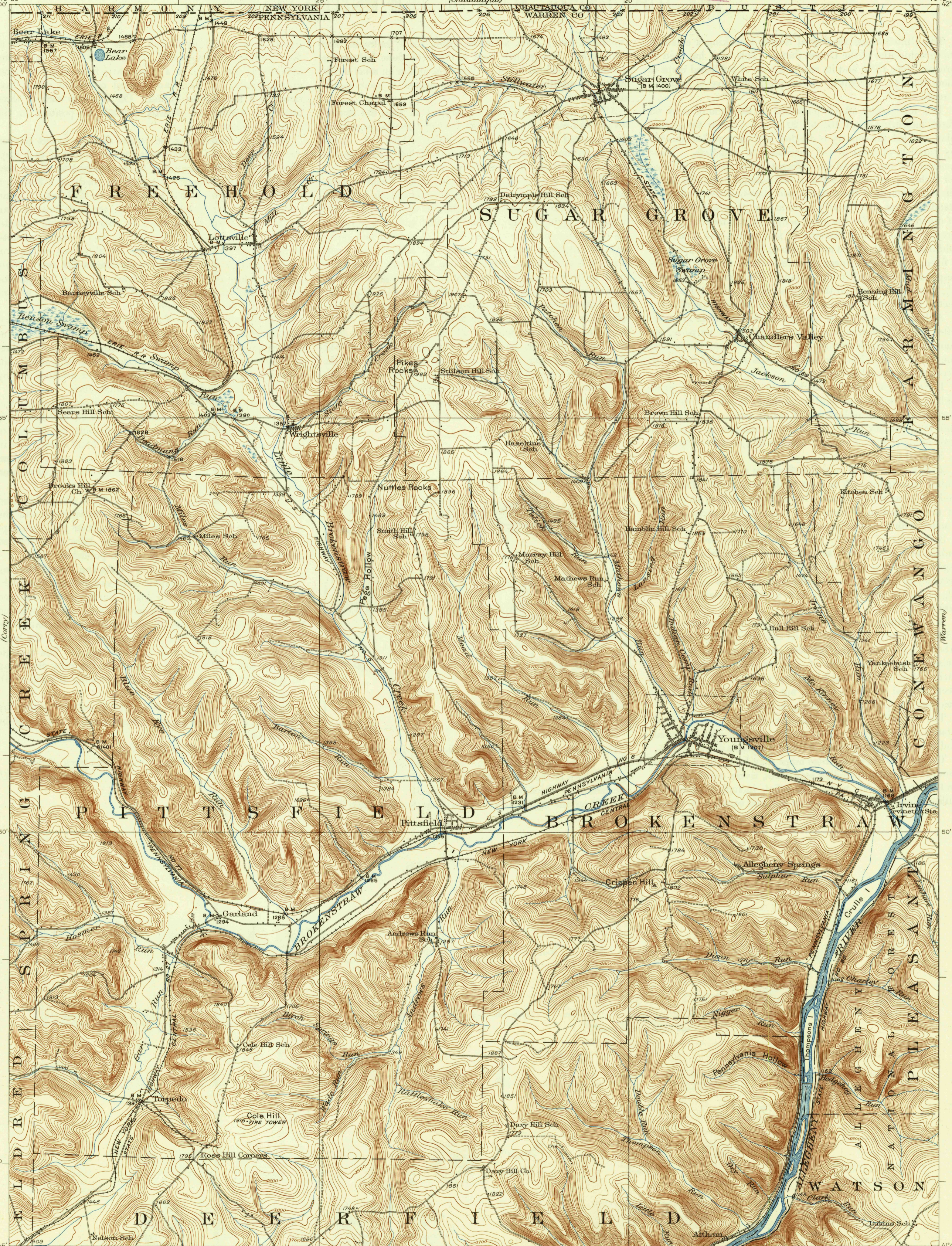


(Corcoran)
19°30'
42'00"

79°15'
42'00"



(Corcoran)

(Warren)

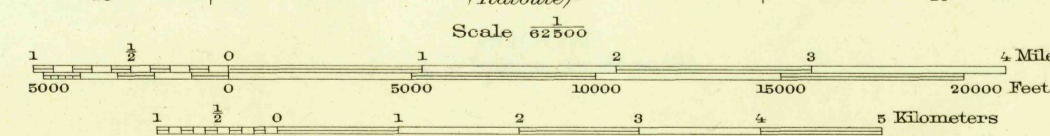
2155000
YARDS

41°45'
19°30'

79°15'

Topography by J. E. Blackburn, J. H. Wilke,
Delar Kimble, and W. A. Fisher
Control by U. S. Geological Survey,
Pennsylvania State Highway Department,
and Pennsylvania Railroad
Surveyed in 1926

APPROXIMATE MEAN
DECLINATION, 1926



Contour interval 20 feet
Datum is mean sea level

Polyconic projection, North American datum
5000 yard grid based upon U. S. zone system, B

USGS
HISTORICAL FILE
TOPOGRAPHIC DIVISION

YOUNGVILLE, PA.-N. Y.
Edition of 1929
reprinted 1937

U. S. G. S.
FILE COPY
Inspection and Editing.

2935