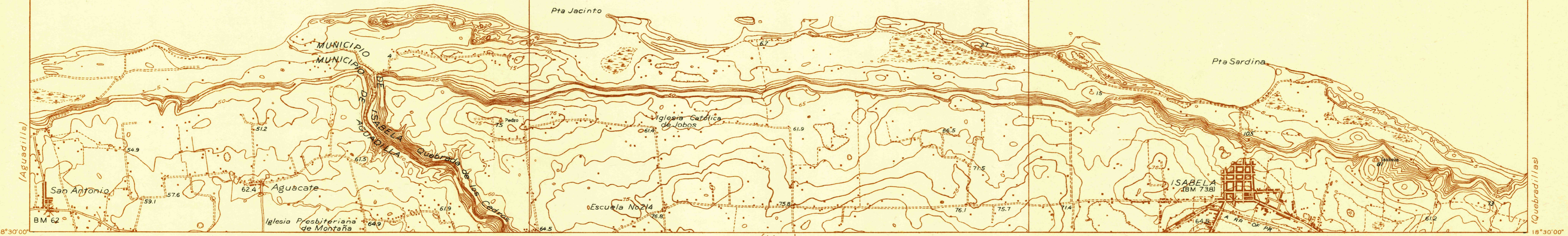


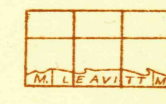
Unedited advance sheet
Subject to correction

67°07'30" 05'00" 02'30" 67°00'00" 33'45" 32'30" 18'30'00"

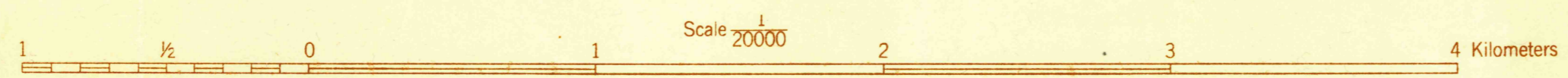
A T L A N T I C O C E A N



Albert Pike, Division Engineer
Topography by R.R. Monbeck and J.B. Leavitt.
Surveyed in 1922
Culture revised in 1937 by C.W. Buckey



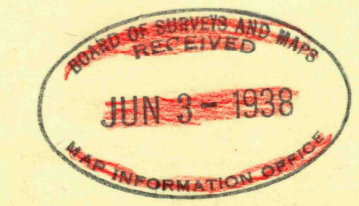
TRUE NORTH
MAGNETIC NORTH
APPROXIMATE MEAN
DECLINATION, 1937



Contour interval 5 Meters
Datum is mean sea level

Polyconic projection. Puerto Rican datum

ISABELA, P. R.



Board of Surveys & Maps
FILE COPY
Map Information Office