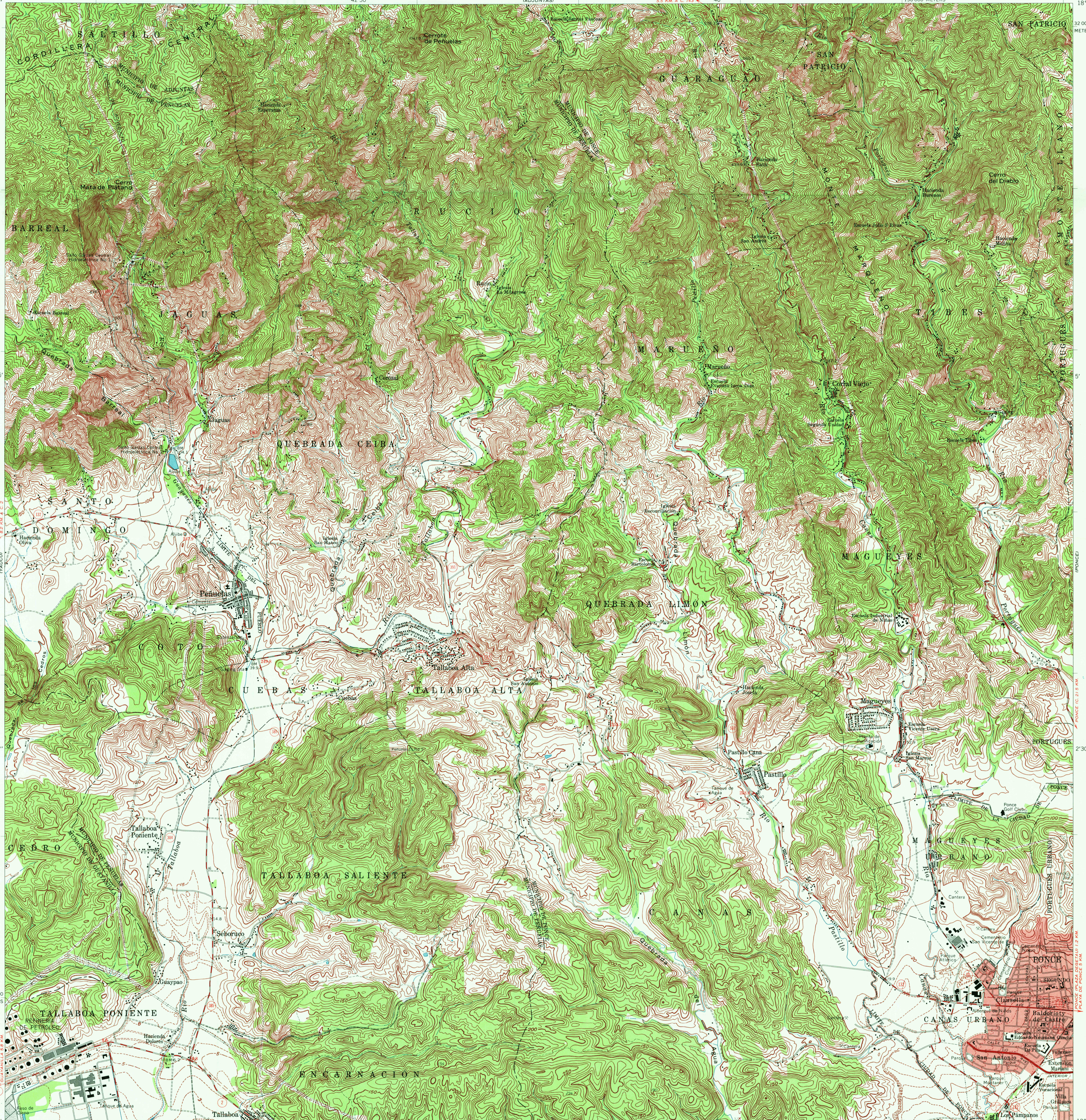
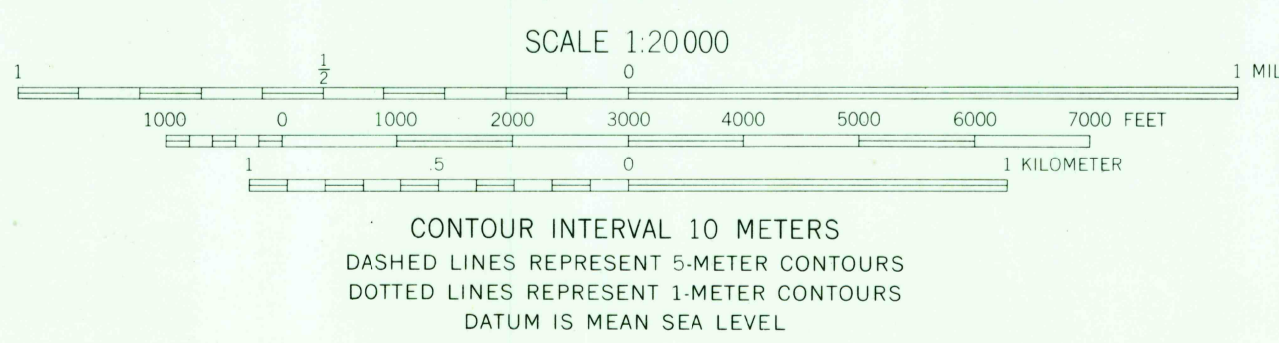


66°45' 18°07'30" 42'30" 40' 130 000 METERS 66°37'30" 18°07'30"



Mapped, edited, and published by the Geological Survey  
Control by USGS and USC&GS  
Topography by photogrammetric methods from aerial photographs  
taken 1941 and planetable surveys 1943. Revised 1964  
Polyconic projection. Puerto Rico datum, 1940 adjustment  
2000 meter grid based on Puerto Rico coordinate system  
Barrio and municipality boundaries by the Puerto Rico  
Planning Board  
Red tint indicates areas in which only landmark buildings  
are shown  
Kilometric reference distances shown in red

APPROXIMATE MEAN  
DECLINATION, 1964



THIS MAP COMPLIES WITH NATIONAL MAP ACCURACY STANDARDS  
FOR SALE BY U.S. GEOLOGICAL SURVEY, WASHINGTON, D. C. 20242  
AND DEPARTMENT OF PUBLIC WORKS, SAN JUAN, PUERTO RICO  
A FOLDER DESCRIBING TOPOGRAPHIC MAPS AND SYMBOLS IS AVAILABLE ON REQUEST



ROAD CLASSIFICATION

Heavy-duty	Light-duty
Medium-duty	Unimproved dirt
	Insular Route

USGS  
HISTORICAL FILE  
TOPOGRAPHIC DIVISION

PEÑUELAS, P. R.  
N1800-6637 5/7/5

1964

Handwritten notes: '101', '2750', and 'PLATA DE PONCE'.