

O C E Á N O A T L Á N T I C O



RIO PIEDRAS (EMP. C. NO. 1) 3.5 KM.
MUNICIPALITY OF MAMEYES

EMP. C. NO. 3 2.4 KM.
MUNICIPALITY OF MAMEYES

(21 Youngs)

19

2215000
YARDS

18° 16' 30"

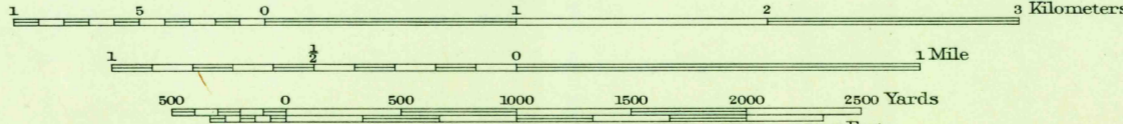
(21 Youngs)

Mapped by the Geological Survey
1943

61°
TIME ZONE
MUNICIPALITY OF LUQUILLO

APPROXIMATE MEAN
DECLINATION, 1943

Scale 30000



Contour interval 10 meters
1 meter contours in dashed lines
Datum is mean sea level

ROAD CLASSIFICATION
1945
Dependable hard-surface heavy-duty road
Secondary hard-surface all-weather road
More than two lanes indicated along road with tick at point of change

Dry weather roads
Loose-surface graded
Unsurfaced, graded
Dirt road
State Route 26

3 Polyconic projection. Puerto Rican datum
CEIBA (PLAZA) 1.3 KM. 5000 yard grid based on U. S. zone system, St. Thomas
HUMACAO 28.3 KM. 2000 meter grid based on Puerto Rico rectangular coordinate system

Barrio and municipality boundaries by the Puerto Rico Planning, Urbanizing, and Zoning Board

USGS
HISTORICAL FILE
TOPOGRAPHIC DIVISION
FAJARDO, P. R.
Edition of 1946
N 1816.5-W 6537.5/7.5