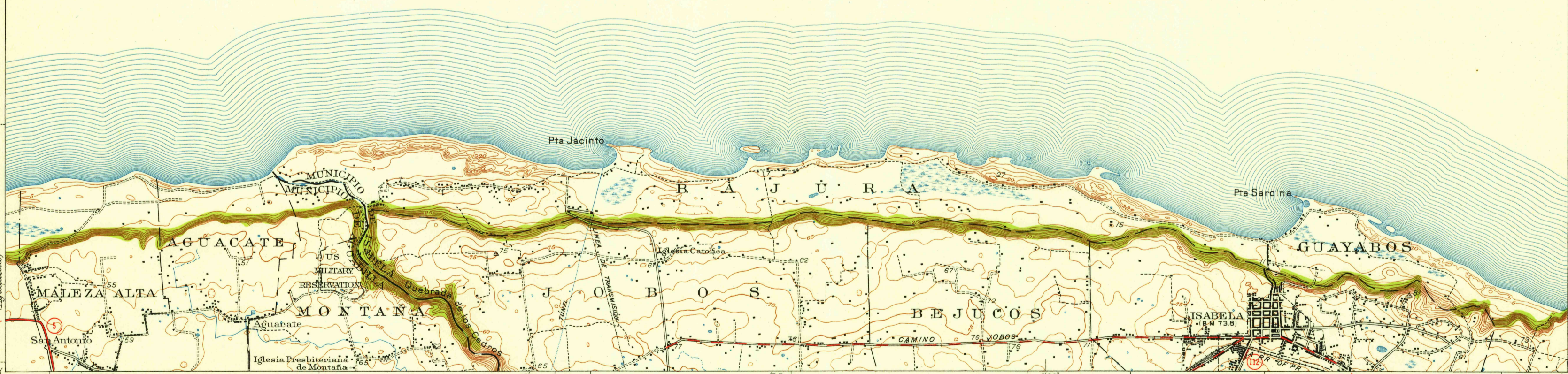
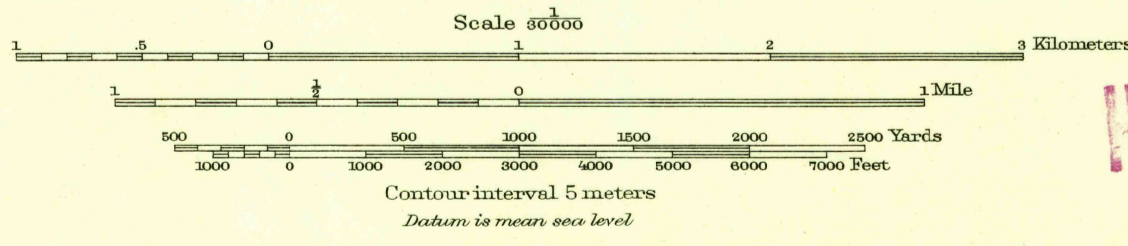


O C E A N O A T L Á N T I C O



Topography by R.R. Monbeck and J.B. Leavitt  
Surveyed in 1922 EMP. C. NO. 2 6.2 KM.  
Culture revised in 1937 by C.W. Buckley  
Revised in 1949



**ROAD CLASSIFICATION**  
Heavy-duty ——— 4 LANE 6 LANE Light-duty ———  
Medium-duty - - - 4 LANE 6 LANE Unimproved dirt =====  
○ Route No.

**HISTORICAL FILES**  
**(DO NOT REMOVE)**

Polyconic projection, Puerto Rican datum  
5000 yard grid based on U.S. zone system. St. Thomas  
2000 meter grid based on Puerto Rico  
rectangular coordinate system  
Barrio and municipality boundaries by the  
Puerto Rico Planning, Urbanizing and Zoning Board

ISABELA, P.R.  
Edition of 1941  
reprinted 1952 with corrections  
N1830-W6700/7.5

FOR SALE BY U. S. GEOLOGICAL SURVEY, WASHINGTON 25, D. C.  
A FOLDER DESCRIBING TOPOGRAPHIC MAPS AND SYMBOLS IS AVAILABLE ON REQUEST