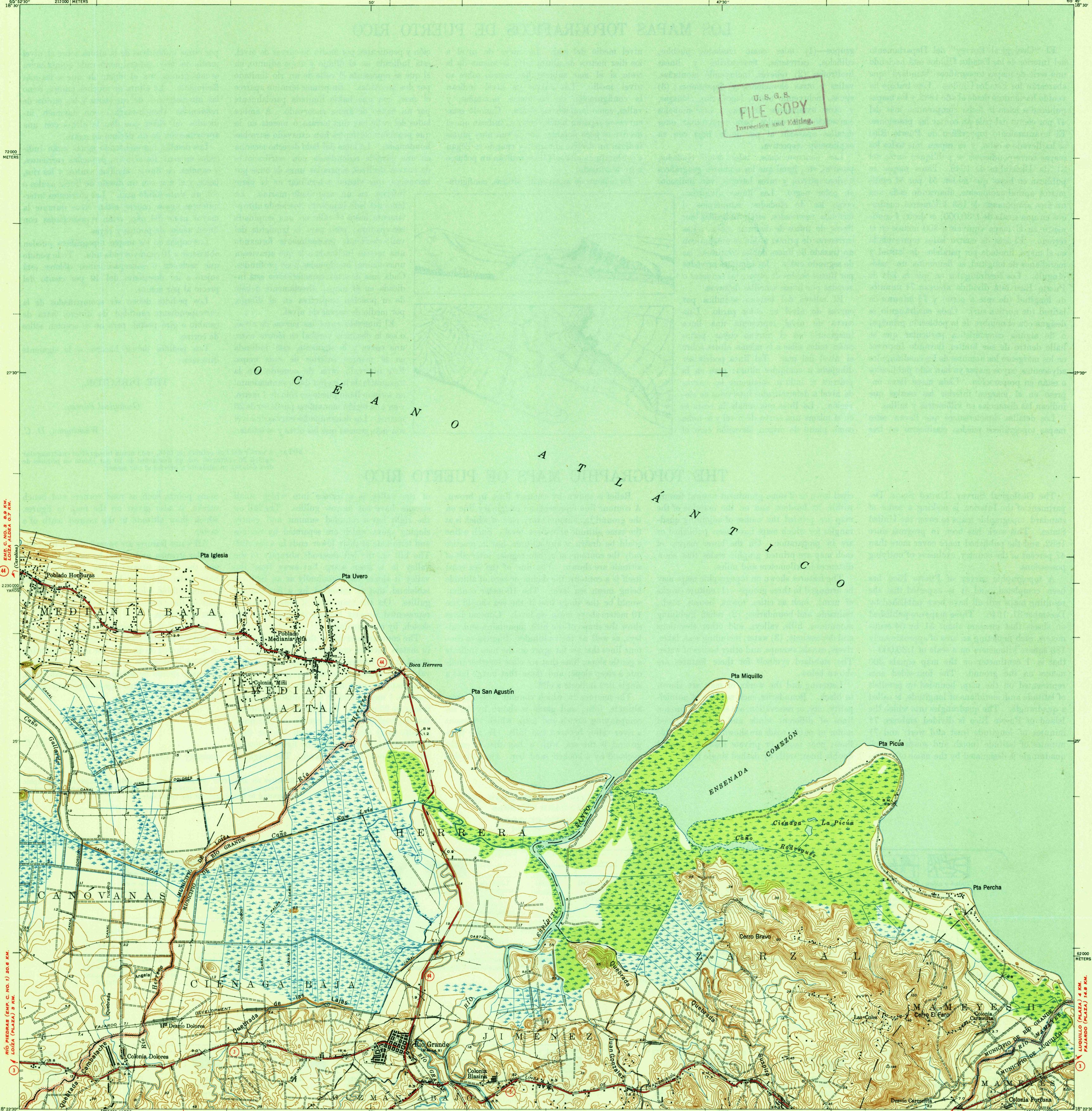


U. S. G. S.
FILE COPY
Inspection and Editing.



EMC. C. NO. 3 8.8 KM.
LOÍZA ALDEA 6.7 KM.

RÍO GRANDE (EMC. C. NO. 1) 20.6 KM.
LOÍZA (PALMA) 9 KM.

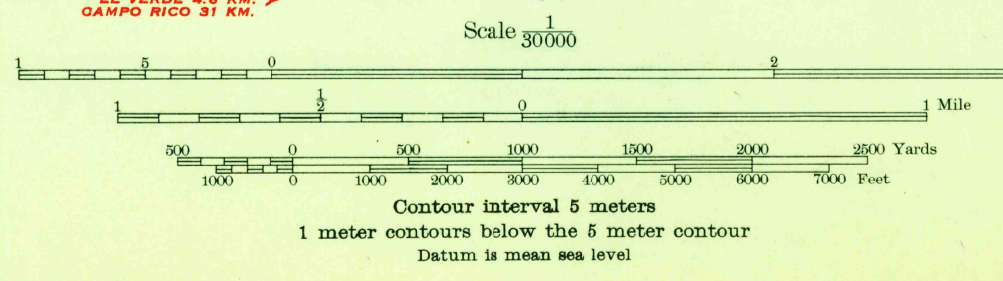
LUQUILLO (PALMA) 4 KM.
PALMARES (PALMA) 1.8 KM.

Topography by C. W. Nottage and F. L. Witkege
Surveyed in 1939-1940

ROAD CLASSIFICATION
1946
Dependable hard surface — heavy-duty road
Secondary hard surface — all weather road
Loose-surface graded — dirt road
Dry weather roads —
Unsurfaced, graded —
Dirt road —

ESCUELA CASIANO CEPEDA 1.3 KM.
EL VERDE 4.6 KM.
CAMPO RICO 91 KM.

APPROXIMATE MEAN
DECLINATION, 1940



U. S. G. S.
HISTORICAL FILE
TOPOGRAPHIC DIVISION
Inspection and Editing.

Barrio and municipality boundaries by the
Puerto Rico Planning, Urbanizing, and
Zoning Board

Polyconic projection. Puerto Rican datum
5000 yard grid based on U. S. zone system, St. Thomas
2000 meter grid based on Puerto Rico rectangular
coordinate system

RÍO GRANDE, P. R.
Edition of 1947
N1822.5—W6545/7.5