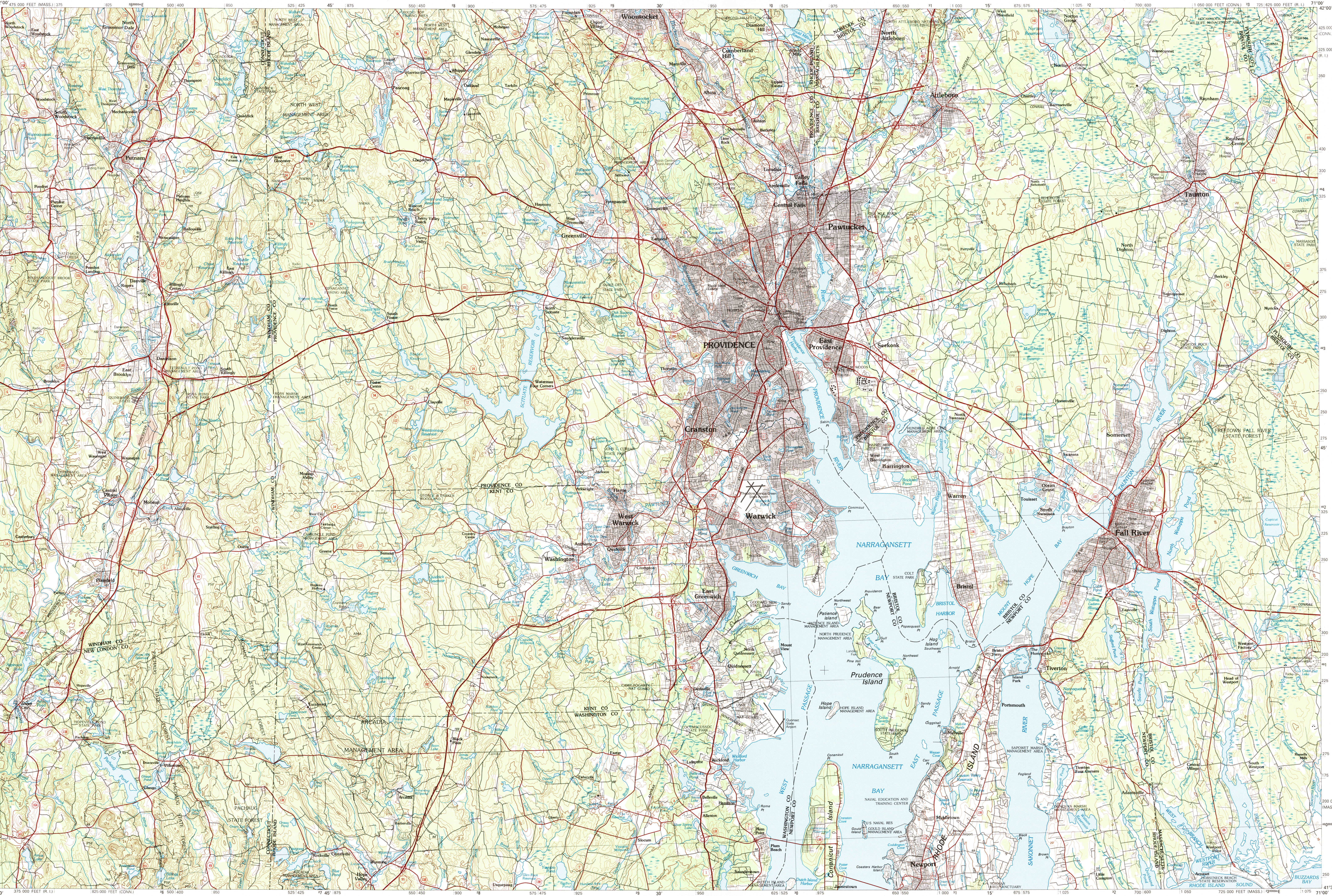


PROVIDENCE, RHODE ISLAND – MASSACHUSETTS – CONNECTICUT

30 X 60 MINUTE SERIES (TOPOGRAPHIC)



# Providence

RHODE ISLAND – MASSACHUSETTS

CONNECTICUT

1:100 000-scale metric  
topographic map



30 X 60 MINUTE QUADRANGLE  
SHOWING

- Contours and elevations in meters
- Highways, roads and other manmade structures
- Water features
- Woodland areas
- Geographic names



GEOLOGICAL SURVEY

1984

Produced by the United States Geological Survey

Compiled from USGS 1:24 000-scale topographic maps dated 1970–1979. Planimetry revised from aerial photographs taken 1975–1977 and other source data. Revised information not field checked.

Map edited 1984

Projection and 10 000-meter grid, zone 19: Universal Transverse Mercator. 25 000-foot grid ticks based on Rhode Island coordinate system, Massachusetts coordinate system, mainland zone, and Connecticut coordinate system. 1927 North American Datum.

To place on the predicted North American Datum 1983 move the projection lines 6 meters south and 41 meters west. There may be private inholdings within the boundaries of the National or State reservations shown on this map.

CONTOUR INTERVAL 10 METERS  
NATIONAL GEODETIC VERTICAL DATUM OF 1929  
ELEVATIONS SHOWN TO THE NEAREST METER

THIS MAP COMPLIES WITH NATIONAL MAP ACCURACY STANDARDS

FOR SALE BY U.S. GEOLOGICAL SURVEY  
DENVER, COLORADO 80225, OR RESTON, VIRGINIA 22092

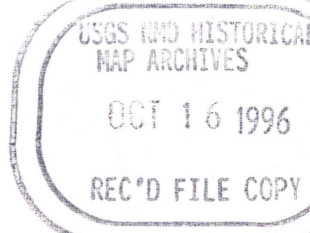
CONVERSION TABLE		DECLINATION DIAGRAM	ADJOINING MAPS										
Meters	Feet		1	2	3								
1	3.2808			4	5								
2	6.5617				6	7	8						
3	9.8425												
4	13.1234												
5	16.4042												
6	19.6850												
7	22.9658												
8	26.2467												
9	29.5276												
10	32.8084												
To convert meters to feet multiply by 3.2808			UTM grid convergence (GN) and 1984 magnetic declination (MN) at center of map Diagram is approximate	1. Holmoe									
To convert feet to meters multiply by 0.3048				2. Boson									
			3. Proscottown										
			5. New Bedford										
			7. Block Island										
			8. Martha's Vineyard										



## Topographic Map Symbols

Primary highway, hard surface	
Secondary highway, hard surface	
Light duty road, principal street, hard or improved surface	
Other road or street; trail	
Route marker: Interstate; U. S. State	
Railroad: standard gage; narrow gage	
Bridge, overpass, underpass	
Tunnel: road; railroad	
Built-up area, locality, elevation	
Airport: landing field; landing strip	
National boundary	
State boundary	
County boundary	
National or State reservation boundary	
Land grant boundary	
U. S. public lands survey: range, township, section	
Range, township; section line: protracted	
Power transmission line: pipeline	
Dam; dam with lock	
Cemetery; building	
Wellhead; water well; spring	
Mine shaft; pit or cave; mine, quarry; gravel pit	
Campground; picnic area; U. S. location monument	
Ruins; cliff dwelling	
Distorted surface: strip mine, lava, sand	
Contours: index; intermediate; supplementary	
Bathymetric contours: index; intermediate	
Stream, lake; perennial; intermittent	
Rapids, large and small; falls, large and small	
Area to be submerged; marsh, swamp	
Land subject to controlled inundation; woodland	
Scrub; mangrove	
Orchard; vineyard	

A pamphlet describing topographic maps is available on request



1984