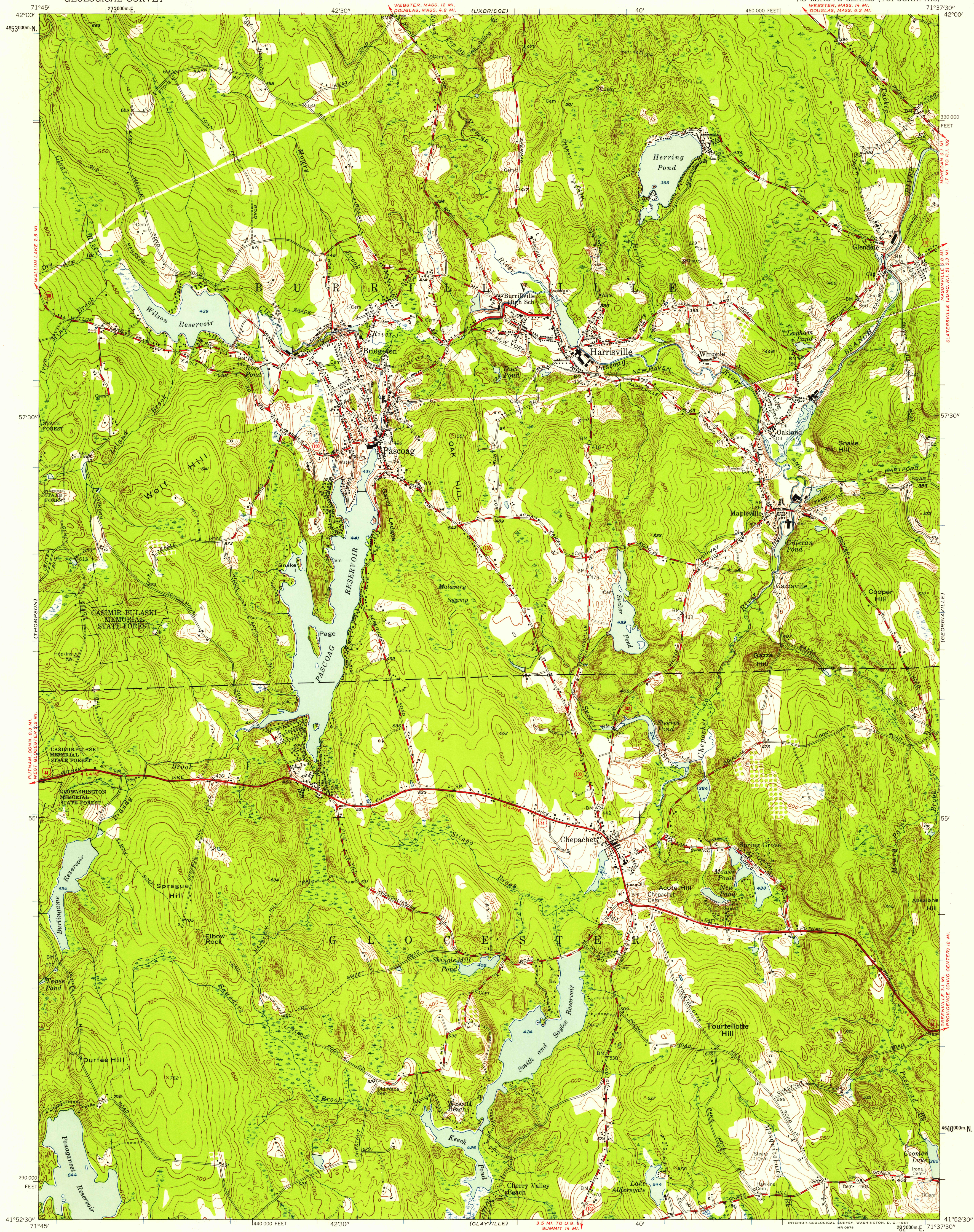


UNITED STATES
DEPARTMENT OF THE INTERIOR
GEOLOGICAL SURVEY

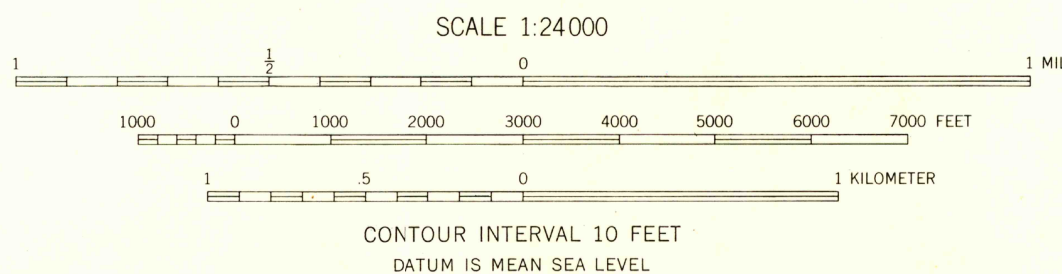
CHEPACHET QUADRANGLE
RHODE ISLAND—PROVIDENCE CO.
7.5 MINUTE SERIES (TOPOGRAPHIC)

(OXFORD)

(BLACKSTONE)



Mapped, edited, and published by the Geological Survey
Control by USGS, USC&GS, and Connecticut Geodetic Survey
Topography by planetable surveys 1942 and 1943
Revised 1955
Polyconic projection. 1927 North American datum
10,000-foot grid based on Rhode Island coordinate system
1000-meter Universal Transverse Mercator grid ticks.
zone 19, shown in blue



USGS
HISTORICAL FILE
TOPOGRAPHIC DIVISION

ROAD CLASSIFICATION

Heavy-duty ——— Light-duty ———
Medium-duty ——— Unimproved dirt ———
U.S. Route ——— State Route ———



CHEPACHET, R. I.
N4152.5—W7137.5/7.5

1955

THIS MAP COMPLIES WITH NATIONAL MAP ACCURACY STANDARDS
FOR SALE BY U. S. GEOLOGICAL SURVEY, WASHINGTON 25, D. C.
A FOLDER DESCRIBING TOPOGRAPHIC MAPS AND SYMBOLS IS AVAILABLE ON REQUEST

U.S.G.S.
FILE COPY
topographic division

NOV 26 1957

1935