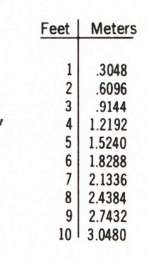
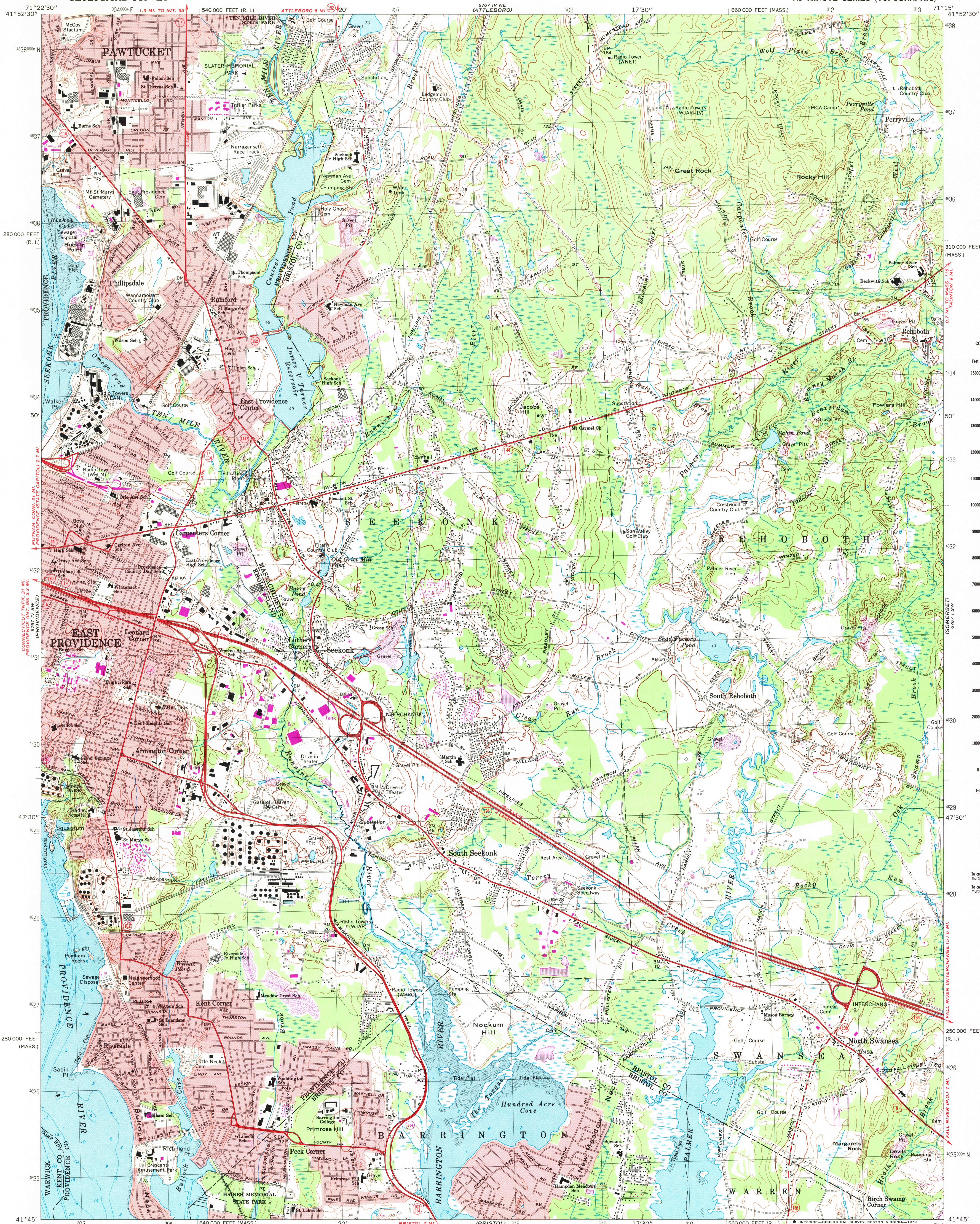


UNITED STATES
DEPARTMENT OF THE INTERIOR
GEOLOGICAL SURVEY

EAST PROVIDENCE QUADRANGLE
RHODE ISLAND - MASSACHUSETTS
7.5 MINUTE SERIES (TOPOGRAPHIC)



To convert feet to meters
multiply by 3.048

To convert meters to feet
multiply by 3.2808

Mapped, edited, and published by the Geological Survey
Revised in cooperation with Massachusetts Department
of Public Works

Control by USGS, USC&GS, and Massachusetts Geodetic Survey

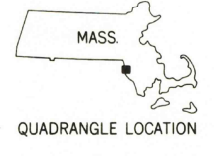
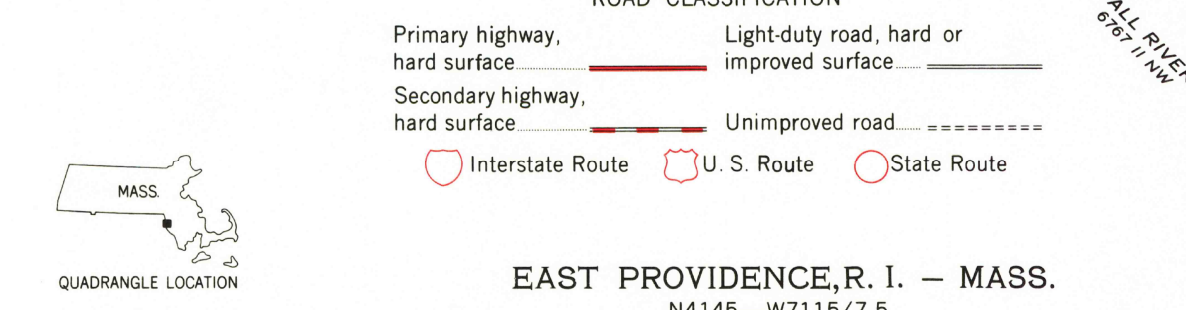
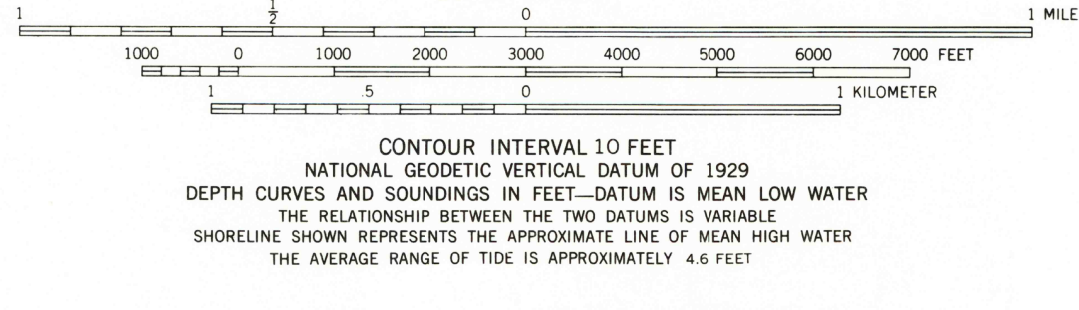
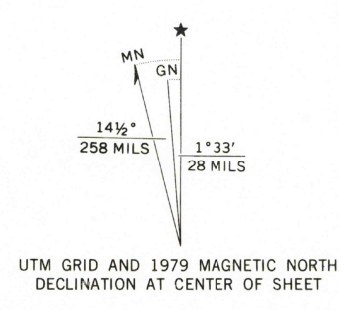
Topography by planetable surveys 1935 and 1939
Revised from aerial photographs taken 1969. Field checked 1971

Selected hydrographic data compiled from USC&GS Charts 278 and
352 (1970). This information is not intended for navigational purposes

Polyconic projection. 1927 North American datum
10,000-foot grids based on Massachusetts coordinate system,
mainland zone, and Rhode Island coordinate system
1000-meter Universal Transverse Mercator grid,
zone 19

Red tint indicates areas in which only landmark buildings are shown

There may be private boundaries within the boundaries of
the National or State reservations shown on this map



EAST PROVIDENCE, R. I. - MASS.
N4145-W7115/7.5

FOR SALE BY U. S. GEOLOGICAL SURVEY, RESTON, VIRGINIA 22092
A FOLDER DESCRIBING TOPOGRAPHIC MAPS AND SYMBOLS IS AVAILABLE ON REQUEST

Revisions shown in purple compiled in cooperation with State of
Massachusetts agencies from aerial photographs taken 1977 and other
source data. This information not field checked. Map edited 1979

1971
PHOTOREVISED 1979
AMS 6767 IV SE-SERIES V814

DEC 18 1981