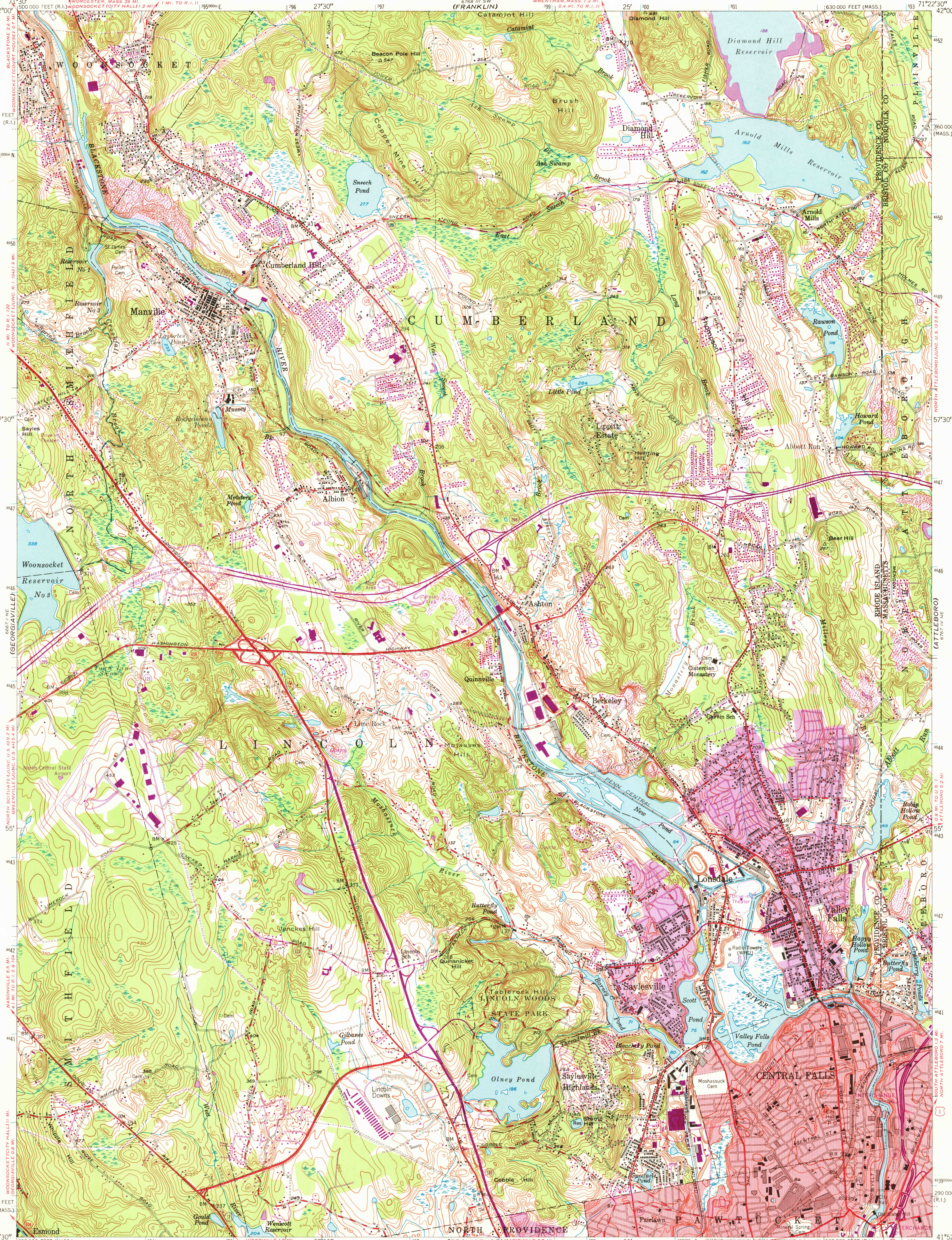


UNITED STATES
DEPARTMENT OF THE INTERIOR
GEOLOGICAL SURVEY

STATE OF MASSACHUSETTS
DEPARTMENT OF PUBLIC WORKS
WILLIAM F. CALLAHAN, COMMISSIONER
(FRANKLIN)

PAWTUCKET QUADRANGLE
RHODE ISLAND-MASSACHUSETTS
7.5 MINUTE SERIES (TOPOGRAPHIC)



Maped, edited, and published by the Geological Survey
Control by USGS, USC&GS, Mass. Dept. of Public Works,
and R. I. Board of Public Roads
Culture and drainage in part compiled from aerial photographs
Surveyed in 1937-1938. Revised in 1949
Polyconic projection. 1927 North American datum
10,000-foot grids based on Rhode Island coordinate system
and Massachusetts coordinate system (Mainland)
Red tint indicates area in which only
landmark buildings are shown
1000-meter Universal Transverse Mercator grid ticks,
zone 19, shown in blue

SCALE 1:24,000
1 0 1000 2000 3000 4000 5000 6000 7000 FEET
1 0 1 2 3 4 5 6 7 8 9 10 KILOMETER

CONTOUR INTERVAL 10 FEET
DATUM IS MEAN SEA LEVEL

ROAD CLASSIFICATION
Heavy-duty 4 LANE 15 LANE Light-duty
Medium-duty 4 LANE 15 LANE Unimproved dirt
U. S. Route State Route
Interstate Route

PAWTUCKET, R. I.-MASS.
N4152.5-W7122.5/7.5
1949
PHOTOREVISED 1970
AMS 6767 IV NW-SERIES V815

THIS MAP COMPLIES WITH NATIONAL MAP ACCURACY STANDARDS
FOR SALE BY U. S. GEOLOGICAL SURVEY, WASHINGTON, D. C. 20242
A FOLDER DESCRIBING TOPOGRAPHIC MAPS AND SYMBOLS IS AVAILABLE ON REQUEST

Revisions shown in purple compiled from aerial
photographs taken 1970. This information not
field checked
Purple tint indicates extension of urban areas