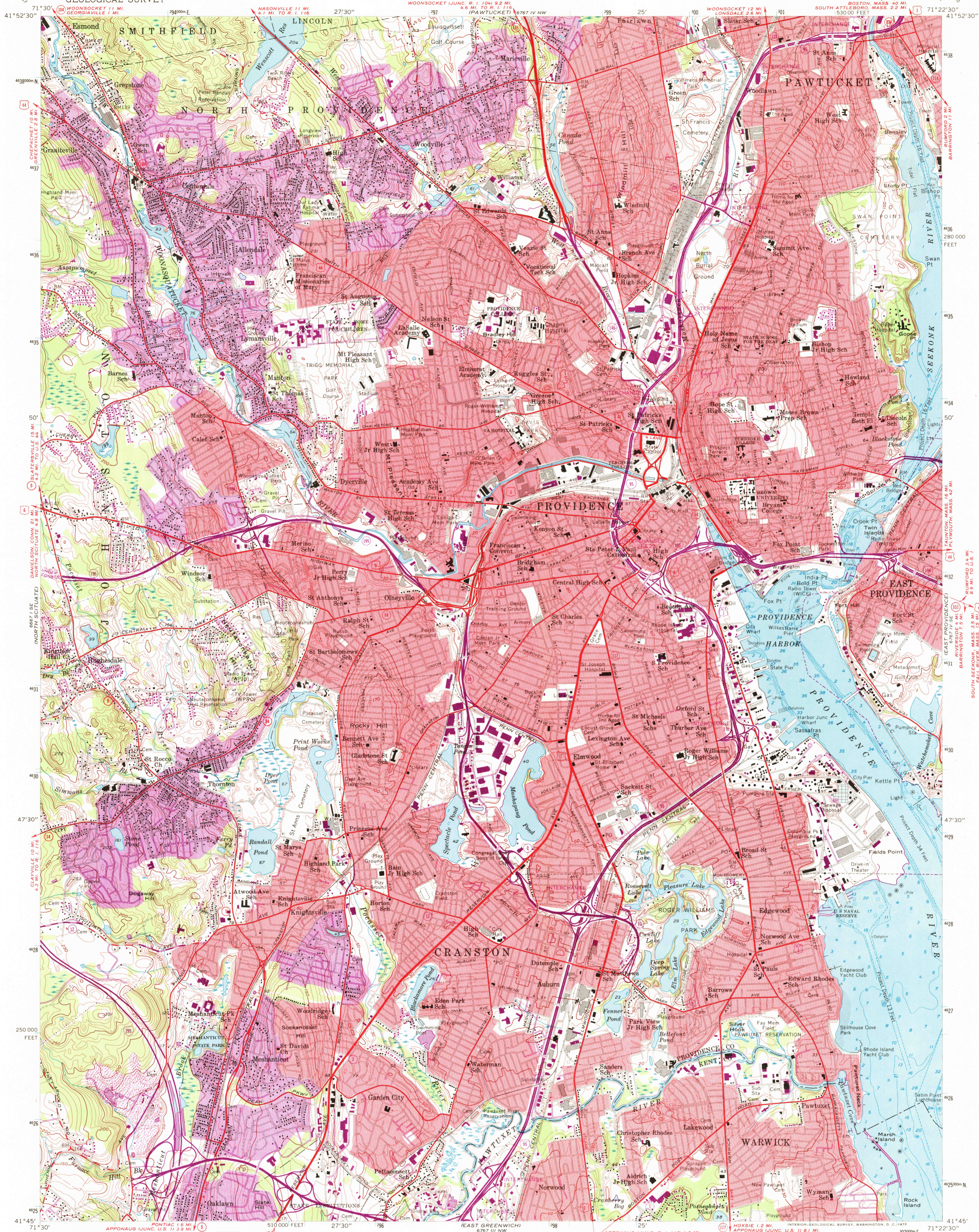


UNITED STATES
DEPARTMENT OF THE INTERIOR
GEOLOGICAL SURVEY

PROVIDENCE QUADRANGLE
RHODE ISLAND
7.5 MINUTE SERIES (TOPOGRAPHIC)



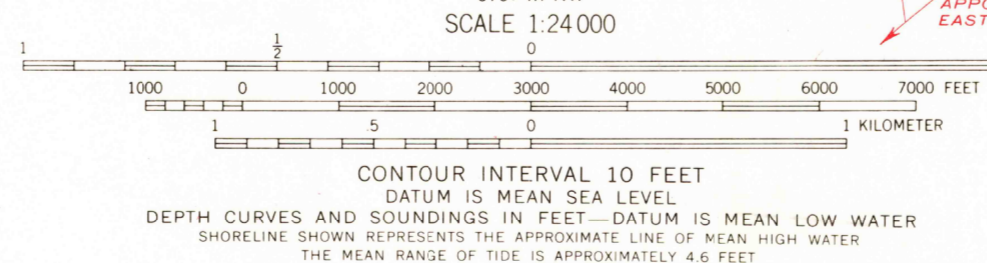
Mapped, edited, and published by the Geological Survey
Control by USGS, USC&GS, and USCE

Culture and drainage in part compiled from aerial photographs
taken 1955. Topography taken from 1:31 680 scale map of
Providence 7.5 minute quadrangle, surveyed 1934-1935. Revised 1957
Hydrography compiled from USC&GS charts 278 (1954) and
352 (1957)

Polyconic projection. 1927 North American datum
10,000-foot grid based on Rhode Island coordinate system
1000-meter Universal Transverse Mercator grid ticks,
zone 19, shown in blue

Red tint indicates areas in which only
landmark buildings are shown

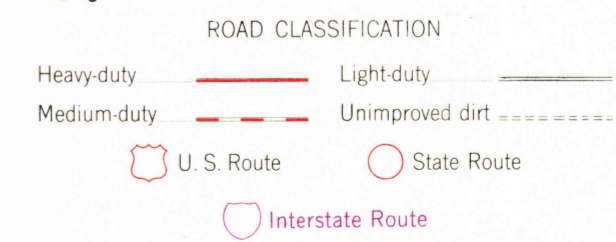
Fine red dashed lines indicate selected fence and field lines
visible on aerial photographs. This information is unchecked



THIS MAP COMPLIES WITH NATIONAL MAP ACCURACY STANDARDS
FOR SALE BY U.S. GEOLOGICAL SURVEY, WASHINGTON, D.C. 20242
A FOLDER DESCRIBING TOPOGRAPHIC MAPS AND SYMBOLS IS AVAILABLE ON REQUEST

Revisions shown in purple compiled from aerial
photographs taken 1970. This information not
field checked

Purple tint indicates extension of urban areas



PROVIDENCE, R. I.

N4145-W1122.5/7.5

1957

PHOTOREVISED 1970
AMS 6767 IV SW-SERIES V815

USGS
HISTORICAL FILE
TOPOGRAPHIC DIVISION