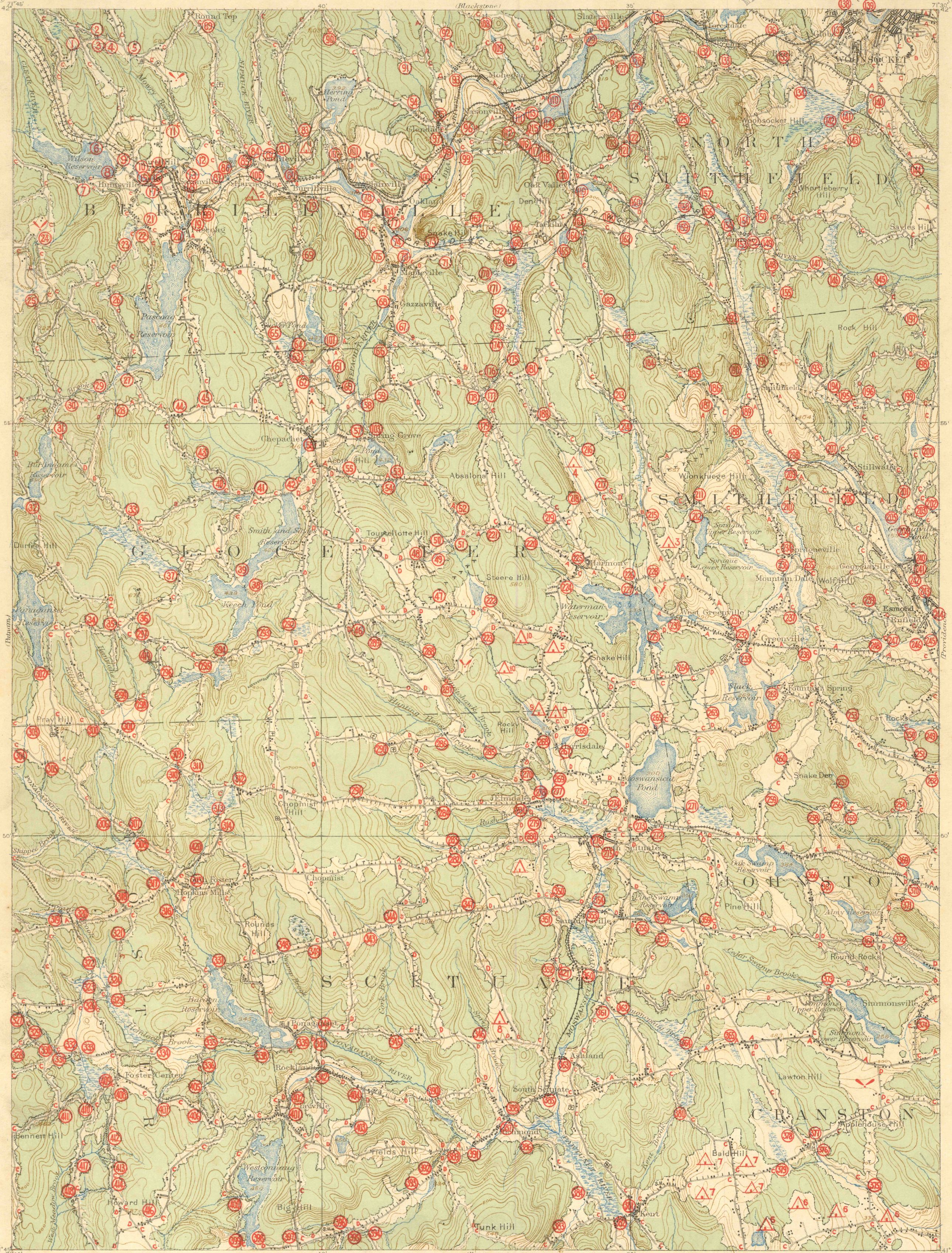


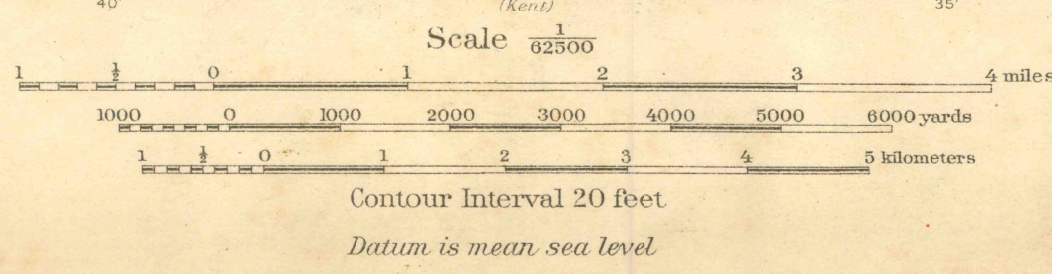
MAPPED BY U.S.G.S.N. 1887

71°30' (Franklin)

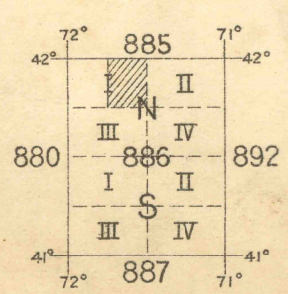


Compiled under the direction of  
Colonel H. Taylor, Corps of Engineers, U.S.A.  
Department Engineer, Eastern Department  
Field work under the immediate supervision of  
Capt. V.L. Peterson and 1st Lieut. B.B. Somerville,  
Corps of Engineers, U.S.A., Dec. 1915.  
Base map from U.S.G.S. engravings.  
Corrections and additions by Department  
Engineer, Eastern Department.

AEROPLANE LANDINGS  
Good Landing  
Possible



Road Legend  
A Paved or Macadamized  
in Good Condition  
B Paved or Macadamized  
in poor Condition  
C Dirt in Good Condition  
D Dirt in Poor Condition  
E Sand



BURRILLVILLE  
RHODE ISLAND

FILE COPY  
MAP INFORMATION OFFICE

NOTE: OFFICERS USING THIS MAP WILL MARK HEREON CORRECTIONS AND ADDITIONS WHICH COME  
TO THEIR ATTENTION AND MAIL DIRECT TO "THE CHIEF OF ENGINEERS, WASHINGTON, D.C."