

Ladson, S.C.
1919
L. W. Green

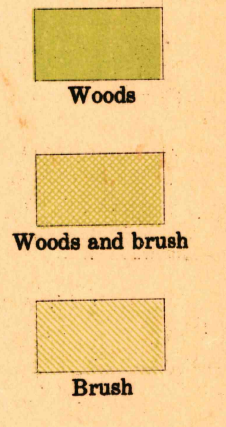
DEPARTMENT OF THE INTERIOR
FRANKLIN K. LANE, SECRETARY
U. S. GEOLOGICAL SURVEY
GEORGE OTIS SMITH, DIRECTOR

TOPOGRAPHY
WAR DEPARTMENT
CORPS OF ENGINEERS, U. S. ARMY

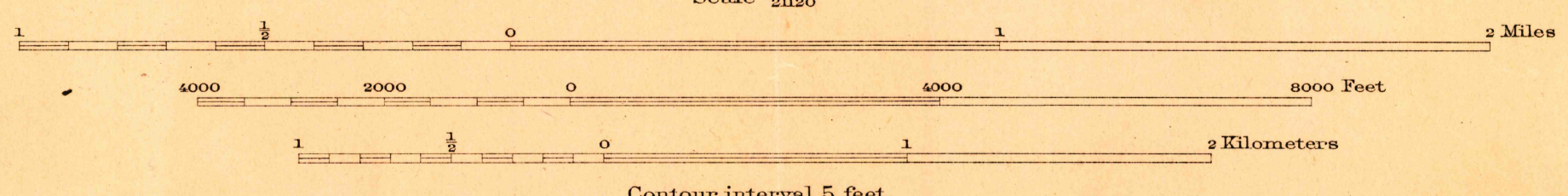
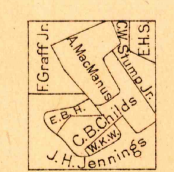
SOUTH CAROLINA
LADSON QUADRANGLE



STRIP WATER BRANCH
SPECIAL REPORTS SECTION



R. B. Marshall, Chief Geographer.
W. H. Herron, Geographer in charge.
Topography by C. B. Childs, F. Graff, Jr., E. B. Hill, J. H. Jennings,
A. MacManus, E. H. Stelle, C. W. Stump, Jr., and W. K. Wood.
Control by R. G. Clinch, H. L. Hudson, E. L. McVair, and
F. L. Shelton.
Surveyed in 1918.
SURVEYED IN COOPERATION WITH THE WAR DEPARTMENT.



Contour interval 5 feet.
Datum is mean sea level.
Contours off shore 5, 10, and 20 feet below mean low water.

APPROXIMATE MEAN
DECLINATION, 1918

Edition of 1918

LADSON