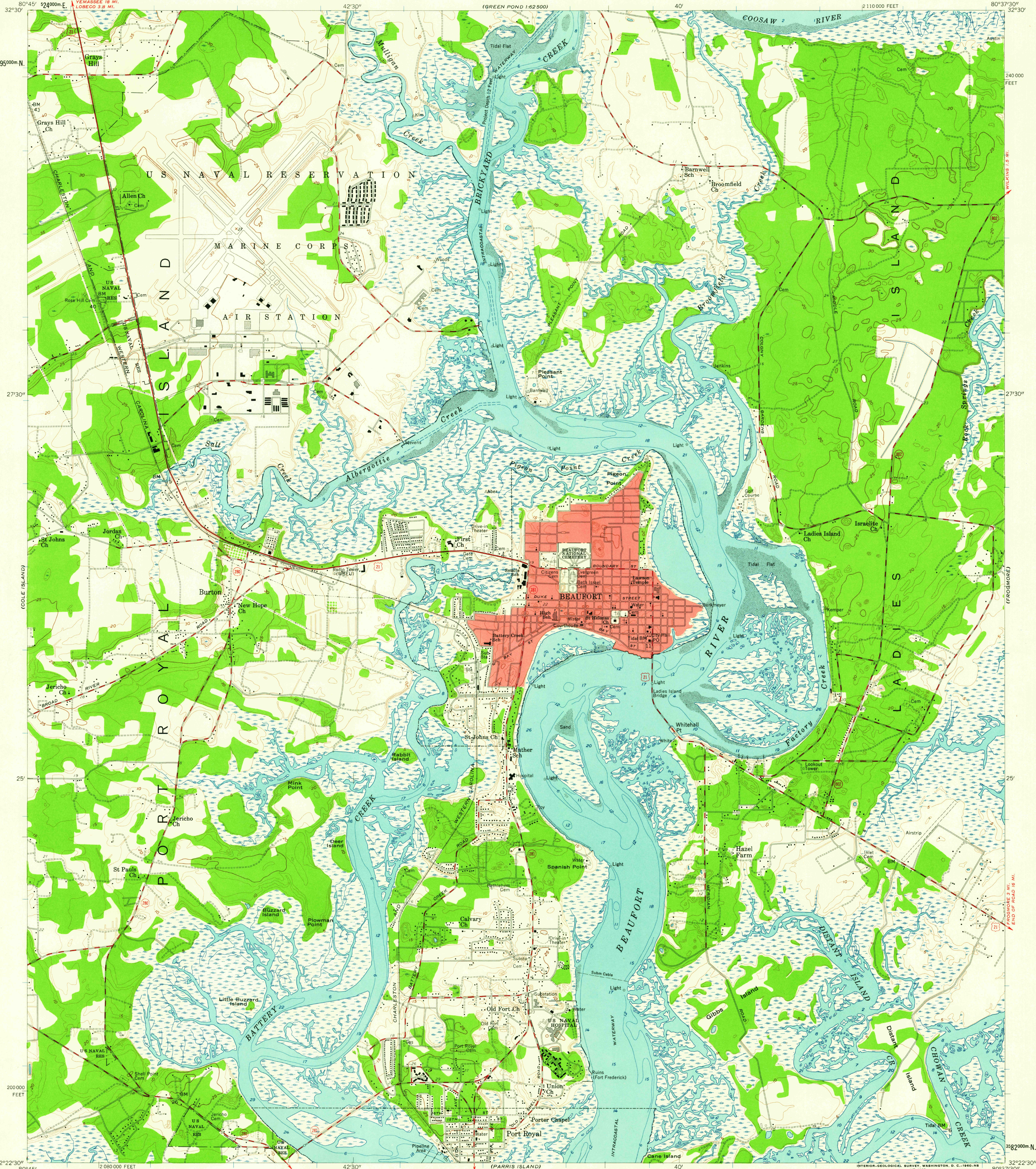


(FEMAISEE)  
1:62,500

UNITED STATES  
DEPARTMENT OF THE INTERIOR  
GEOLOGICAL SURVEY

BEAUFORT QUADRANGLE  
SOUTH CAROLINA—BEAUFORT CO.  
7.5 MINUTE SERIES (TOPOGRAPHIC)  
NW 1/4 FORT FREMONT 15' QUADRANGLE

(GREEN POND)  
1:62,500



(SPRING ISLAND)

Mapped, edited, and published by the Geological Survey  
Control by USGS, USC&GS, USCE, and  
South Carolina Geodetic Survey  
Culture and drainage in part compiled from aerial photographs  
taken 1951. Topography by planetable surveys 1958  
Hydrography compiled from USC&GS charts 571 (1956) and  
794 (1955)  
Polyconic projection. 1927 North American datum  
10,000-foot grid based on South Carolina coordinate system,  
south zone  
1000-meter Universal Transverse Mercator grid ticks,  
zone 17, shown in blue  
Red tint indicates area in which only  
landmark buildings are shown

TRUE NORTH  
MAGNETIC NORTH  
APPROXIMATE MEAN  
DECLINATION, 1955

SCALE 1:24,000  
CONTOUR INTERVAL 5 FEET  
DATUM IS MEAN SEA LEVEL  
DEPTH CURVES AND SOUNDINGS IN FEET—DATUM IS MEAN LOW WATER  
SHORELINE SHOWN REPRESENTS THE APPROXIMATE LINE OF MEAN HIGH WATER  
THE MEAN RANGE OF TIDE IS APPROXIMATELY 7.4 FEET  
THIS MAP COMPLIES WITH NATIONAL MAP ACCURACY STANDARDS  
FOR SALE BY U. S. GEOLOGICAL SURVEY, WASHINGTON 25, D. C.  
A FOLDER DESCRIBING TOPOGRAPHIC MAPS AND SYMBOLS IS AVAILABLE ON REQUEST



ROAD CLASSIFICATION  
Heavy-duty ——— Light-duty ———  
Medium-duty ——— Unimproved dirt ———  
U.S. Route ——— State Route ———  
U.S.G.S.  
FILE COPY  
TOPOGRAPHIC DIVISION  
BEAUFORT, S. C.  
NW 1/4 FORT FREMONT 15' QUADRANGLE  
N 3222.5—W 8037.5/7.5  
1958

(ST. PHILLIPS ISLAND)  
DEC-2 1980